

Datasheet for 600-401-GB8**ZBTB40 Antibody****Overview**

Description:	Anti-ZBTB40 (RABBIT) Antibody - 600-401-GB8
Item No.:	600-401-GB8
Size:	100 µg
Applications:	ELISA, IF, WB
Reactivity:	Human
Host Species:	Rabbit

Product Details

Background:	The ZBTB family of proteins is comprised of diverse zinc finger proteins that also contain a BTB (BR-C, ttk and bab) domain. While little is known about ZBTB40, other ZBTB proteins, such as ZBTB4 bind methylated DNA and repress transcription. Single nucleotide polymorphisms near ZBTB40 have been linked to differences in bone mineral density of the hip and lumbar spine, and had a significant association with low-trauma fractures suggesting that ZBTB40 may be involved in bone development and formation.
Synonyms:	ZBTB40 Antibody, ZNF923, KIAA0478, Zinc finger and BTB domain-containing protein 40
Host Species:	Rabbit
Clonality:	Polyclonal
Format:	IgG

Target Details

Gene Name:	ZBTB40
Reactivity:	Human
Immunogen Type:	Conjugated Peptide
Immunogen:	Anti-ZBTB40 antibody was prepared from whole rabbit serum produced by repeated immunizations with a 19 amino acid synthetic peptide near the N-terminus of human ZBTB40.

Purity/Specificity: Anti-ZBTB40 Antibody was affinity purified from monospecific antiserum by immunoaffinity chromatography. ZBTB40 antibody is human specific. At least two isoforms of ZBTB40 are known to exist. This antibody is predicted to not cross-react with other ZBTB protein family members.

Relevant Links:

- [UniProtKB - Q9NUA8](#)
- [GeneID - 9923](#)
- [NCBI - NP_001077090.1](#)

Application Details

Tested Applications: ELISA, IF, WB

Application Note: Anti-ZBTB40 Antibody has been tested for use in ELISA, Western Blotting and Immunofluorescence. Specific conditions for reactivity should be optimized by the end user. Expect a band at approximately 138 kDa in Western Blots of specific cell lysates and tissues.

Assay Dilutions: All assays should be optimized by the user. Recommended dilutions (if any) may be listed below.

ELISA: 1:5,000

IF: 20 µg/mL

WB: 0.5 µg/mL

Formulation

Physical State: Liquid (sterile filtered)

Concentration: 1 mg/mL by UV absorbance at 280 nm

Buffer: 0.01 M Sodium Phosphate, 0.25 M Sodium Chloride, pH 7.2

Preservative: 0.02% (w/v) Sodium Azide

Stabilizer: None

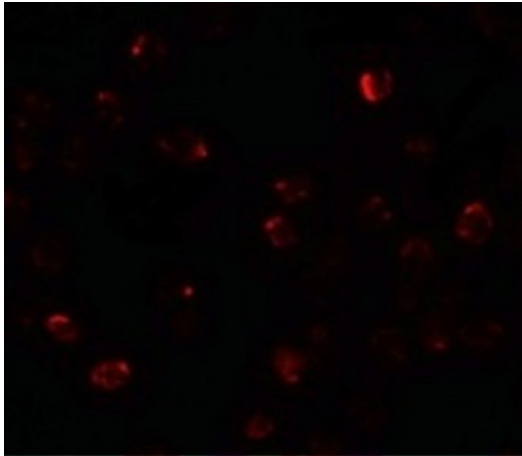
Shipping & Handling

Shipping Condition: Dry Ice

Storage Condition: Store vial at -20° C prior to opening. Aliquot contents and freeze at -20° C or below for extended storage. Avoid cycles of freezing and thawing. Centrifuge product if not completely clear after standing at room temperature. This product is stable for several weeks at 4° C as an undiluted liquid. Dilute only prior to immediate use.

Expiration: Expiration date is one (1) year from date of receipt.

Images

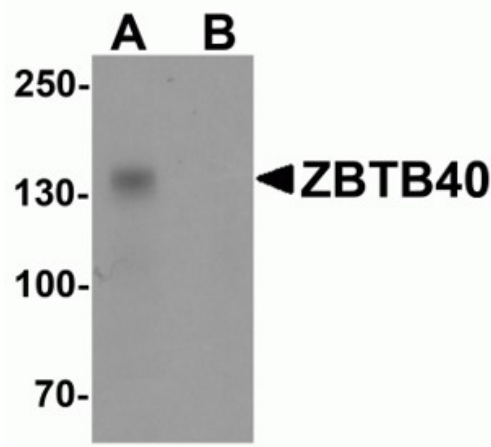


Immunofluorescence Microscopy

Immunofluorescence of ZBTB40.

Cell: Raji cells.

Primary Antibody: ZBTB40 antibody at 20 µg/mL.



Western Blot

Western blot analysis of ZBTB40.

Load: Raji cell lysate.

Primary antibody: ZBTB40 antibody at 0.5 µg/ml in (A) the absence and (B) the presence of blocking peptide.

Disclaimer

This product is for research use only and is not intended for therapeutic or diagnostic applications. Please contact a technical service representative for more information. All products of animal origin manufactured by Rockland Immunochemicals are derived from starting materials of North American origin. Collection was performed in United States Department of Agriculture (USDA) inspected facilities and all materials have been inspected and certified to be free of disease and suitable for exportation. All properties listed are typical characteristics and are not specifications. All suggestions and data are offered in good faith but without guarantee as conditions and methods of use of our products are beyond our control. All claims must be made within 30 days following the date of delivery. The prospective user must determine the suitability of our materials before adopting them on a commercial scale. Suggested uses of our products are not recommendations to use our products in violation of any patent or as a license under any patent of Rockland Immunochemicals, Inc. If you require a commercial license to use this material and do not have one, then return this material, unopened to: Rockland Inc., P.O. BOX 5199, Limerick, Pennsylvania, USA.