

Datasheet for 600-401-GB7**ZBTB4 Antibody****Overview**

Description:	Anti-ZBTB4 (RABBIT) Antibody - 600-401-GB7
Item No.:	600-401-GB7
Size:	100 µg
Applications:	ELISA, IF, IHC, WB
Reactivity:	Human, Mouse
Host Species:	Rabbit

Product Details

Background:	The ZBTB family of proteins is comprised of diverse zinc finger proteins that also contain a BTB (BR-C, ttk and bab) domain. Similar to Kaiso, a zinc-finger containing protein that can bind methylated CpGs, ZBTB4 can also bind methylated DNA and repress transcription. ZBTB4 has been shown to associate with the Sin3/histone deacetylase co-repressor and repress expression of P21CIP1 as part of a heterodimeric complex with Miz1. In cultured cells, depletion of ZBTB4 promotes cell cycle arrest in response to p53 activation and suppresses apoptosis through regulation of P21CIP1, suggesting that ZBTB4 is a critical determinant of the cellular response to p53 activation. HIPK2, a kinase that is involved in cellular proliferation and survival, phosphorylates and down-regulates ZBTB4 under normal cell growth conditions; this degradation increases with DNA damage.
Synonyms:	ZBTB4 Antibody, ZNF903, KAISO-L1, KIAA1538, Zinc finger and BTB domain-containing protein 4, KAISO-like zinc finger protein 1
Host Species:	Rabbit
Clonality:	Polyclonal
Format:	IgG

Target Details

Gene Name:	ZBTB4
Reactivity:	Human, Mouse
Immunogen Type:	Conjugated Peptide

Immunogen:	Anti-ZBTB4 antibody was prepared from whole rabbit serum produced by repeated immunizations with a 18 amino acid synthetic peptide near the C-terminus of human ZBTB4.
Purity/Specificity:	Anti-ZBTB4 Antibody was affinity purified from monospecific antiserum by immunoaffinity chromatography. At least four isoforms of ZBTB4 are known to exist; this antibody will only recognize the longest isoform. This antibody is predicted to not cross-react with other ZBTB protein family members.
Relevant Links:	<ul style="list-style-type: none">• UniProtKB - Q9P1Z0• GeneID - 57659• NCBI - NP_001122305.1

Application Details

Tested Applications:	ELISA, IF, IHC, WB
Application Note:	Anti-ZBTB4 Antibody has been tested for use in ELISA, Western Blotting, Immunohistochemistry and Immunofluorescence. Specific conditions for reactivity should be optimized by the end user. Expect a band at approximately 105 kDa in Western Blots of specific cell lysates and tissues.
Assay Dilutions:	All assays should be optimized by the user. Recommended dilutions (if any) may be listed below.
ELISA:	1:10,000
IF:	20 µg/mL
IHC:	2.5 µg/mL
WB:	1 µg/mL

Formulation

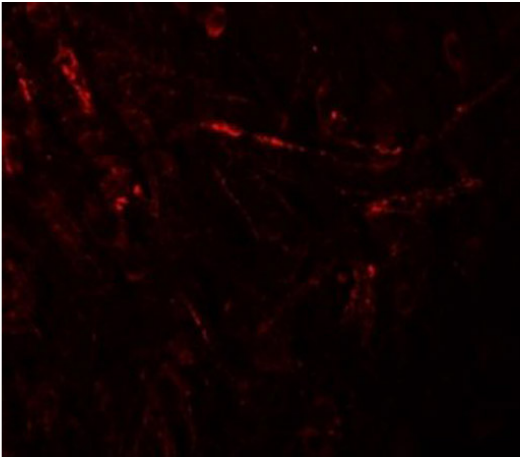
Physical State:	Liquid (sterile filtered)
Concentration:	1 mg/mL by UV absorbance at 280 nm
Buffer:	0.01 M Sodium Phosphate, 0.25 M Sodium Chloride, pH 7.2
Preservative:	0.02% (w/v) Sodium Azide
Stabilizer:	None

Shipping & Handling

Shipping Condition:	Wet Ice
----------------------------	---------

Storage Condition:	Antibody can be stored at 4°C up to one year. Antibodies should not be exposed to prolonged high temperatures.
Expiration:	Expiration date is one (1) year from date of receipt.

Images

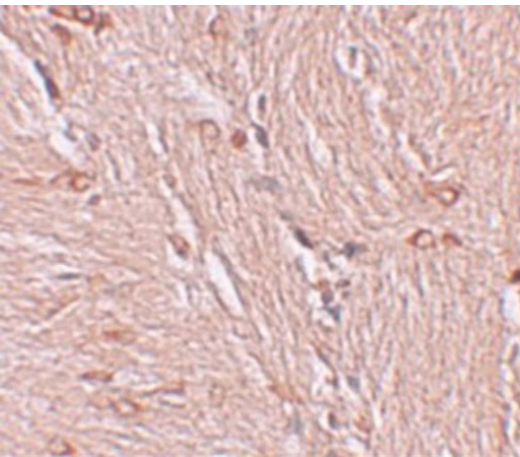


Immunofluorescence Microscopy

Immunofluorescence of ZBTB4.

Tissue: human brain tissue.

Primary Antibody: ZBTB4 antibody at 20 µg/mL.

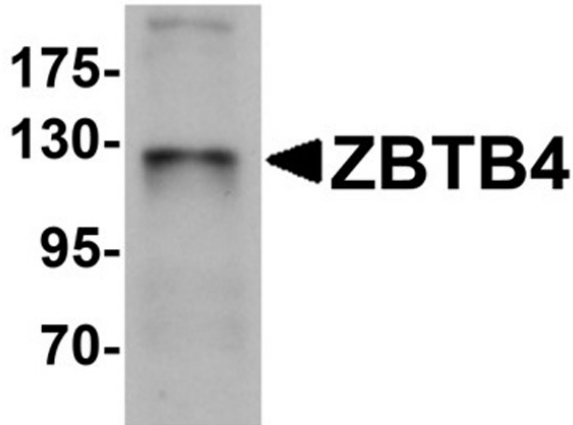


Immunohistochemistry

Immunohistochemistry of ZBTB4.

Tissue: human brain tissue.

Primary Antibody: ZBTB4 antibody at 2.5 µg/mL.

**Western Blot**

Western blot analysis of ZBTB4.

Load: SK-N-SH cell lysate.

Primary Antibody: ZBTB4 antibody at 1 µg/mL.

Disclaimer

This product is for research use only and is not intended for therapeutic or diagnostic applications. Please contact a technical service representative for more information. All products of animal origin manufactured by Rockland Immunochemicals are derived from starting materials of North American origin. Collection was performed in United States Department of Agriculture (USDA) inspected facilities and all materials have been inspected and certified to be free of disease and suitable for exportation. All properties listed are typical characteristics and are not specifications. All suggestions and data are offered in good faith but without guarantee as conditions and methods of use of our products are beyond our control. All claims must be made within 30 days following the date of delivery. The prospective user must determine the suitability of our materials before adopting them on a commercial scale. Suggested uses of our products are not recommendations to use our products in violation of any patent or as a license under any patent of Rockland Immunochemicals, Inc. If you require a commercial license to use this material and do not have one, then return this material, unopened to: Rockland Inc., P.O. BOX 5199, Limerick, Pennsylvania, USA.