

Datasheet for 600-401-GB3**ZBRK1 Antibody****Overview**

Description:	Anti-ZBRK1 (RABBIT) Antibody - 600-401-GB3
Item No.:	600-401-GB3
Size:	100 µg
Applications:	ELISA, WB
Reactivity:	Human, Mouse, Rat
Host Species:	Rabbit

Product Details

Background: ZBRK1 is a member of the Kruppel-associated box-zinc finger protein (KRAB-ZFP) protein family of transcriptional repressors. ZBRK1 has been shown to not only be up-regulated in senescent fibroblasts but also interacts with BRCA1, a transcriptional regulator with tumor suppressor activity. ZBRK1 binds to a specific sequence within the GADD45 gene, supporting the assembly of a nuclear complex containing BRCA1 and repressing its transcription. Recent experiments demonstrate that ZBRK1 can homo-oligomerize in vitro and in vivo through a C-terminal transcriptional repression domain (CTRD), and this oligomerization facilitates the ZBRK1-directed transcriptional repression through ZBRK1 response elements. These results suggest that higher order ZBRK1 oligomers may assemble through both protein-DNA and CTRD-dependent protein-protein interactions.

Synonyms:	ZBRK1 Antibody, ZFQR, ZBRK1, Zinc finger protein 350, KRAB zinc finger protein ZFQR
Host Species:	Rabbit
Clonality:	Polyclonal
Format:	IgG

Target Details

Gene Name:	ZNF350
Reactivity:	Human, Mouse, Rat
Immunogen Type:	Conjugated Peptide

Immunogen:	Anti-ZBRK1 antibody was prepared from whole rabbit serum produced by repeated immunizations with a 20 amino acid synthetic peptide near the C-terminus of the human ZBRK1.
Purity/Specificity:	Anti-ZBRK1 Antibody was affinity purified from monospecific antiserum by immunoaffinity chromatography. Cross reactivity with ZBRK1 from other sources has not been determined.
Relevant Links:	<ul style="list-style-type: none">• UniProtKB - Q9GZX5• GeneID - 59348• NCBI - NP_067645.3

Application Details

Tested Applications:	ELISA, WB
Application Note:	Anti-ZBRK1 Antibody has been tested for use in ELISA and Western Blotting. Specific conditions for reactivity should be optimized by the end user. Expect a band at approximately 60 kDa in Western Blots of specific cell lysates and tissues.
Assay Dilutions:	All assays should be optimized by the user. Recommended dilutions (if any) may be listed below.
ELISA:	1:10,000
WB:	1 µg/mL

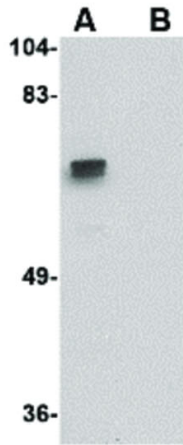
Formulation

Physical State:	Liquid (sterile filtered)
Concentration:	1 mg/mL by UV absorbance at 280 nm
Buffer:	0.01 M Sodium Phosphate, 0.25 M Sodium Chloride, pH 7.2
Preservative:	0.02% (w/v) Sodium Azide
Stabilizer:	None

Shipping & Handling

Shipping Condition:	Dry Ice
Storage Condition:	Store vial at -20° C prior to opening. Aliquot contents and freeze at -20° C or below for extended storage. Avoid cycles of freezing and thawing. Centrifuge product if not completely clear after standing at room temperature. This product is stable for several weeks at 4° C as an undiluted liquid. Dilute only prior to immediate use.
Expiration:	Expiration date is one (1) year from date of receipt.

Images



Western Blot

Western Blot of ZBRK1 antibody. Lane A: A20 cell lysate in the absence of blocking peptide. Lane B: A20 cell lysate in the presence of blocking peptide. Load: 35 μ g per lane. Primary Antibody: Anti-ZBRK1 at 1 μ g/mL. Secondary antibody: Peroxidase rabbit secondary antibody at 1:10,000 for 45 min at RT. Block: 5% BLOTTO overnight at 4°C. Predicted/Observed size: 13.8 kDa, ~70 kDa for ZBRK1.

Disclaimer

This product is for research use only and is not intended for therapeutic or diagnostic applications. Please contact a technical service representative for more information. All products of animal origin manufactured by Rockland Immunochemicals are derived from starting materials of North American origin. Collection was performed in United States Department of Agriculture (USDA) inspected facilities and all materials have been inspected and certified to be free of disease and suitable for exportation. All properties listed are typical characteristics and are not specifications. All suggestions and data are offered in good faith but without guarantee as conditions and methods of use of our products are beyond our control. All claims must be made within 30 days following the date of delivery. The prospective user must determine the suitability of our materials before adopting them on a commercial scale. Suggested uses of our products are not recommendations to use our products in violation of any patent or as a license under any patent of Rockland Immunochemicals, Inc. If you require a commercial license to use this material and do not have one, then return this material, unopened to: Rockland Inc., P.O. BOX 5199, Limerick, Pennsylvania, USA.