

**Datasheet for 600-401-GA9****ZBED2 Antibody****Overview**

<b>Description:</b>	Anti-ZBED2 (RABBIT) Antibody - 600-401-GA9
<b>Item No.:</b>	600-401-GA9
<b>Size:</b>	100 µg
<b>Applications:</b>	ELISA, IHC, WB
<b>Reactivity:</b>	Human
<b>Host Species:</b>	Rabbit

**Product Details**

<b>Background:</b>	The ZBED2 protein possesses a BED-type zinc finger, a 50 to 60 amino acid domain that contains a characteristic motif with two highly conserved aromatic positions, as well as a shared pattern of cysteines and histidines that is predicted to form the zinc finger. ZBED2 was identified through a screening of 37 human gastric cancer cDNA libraries. While the function of this protein unknown at this time, the presence of the zinc finger suggests that it may have DNA or RNA binding properties.
<b>Synonyms:</b>	ZBED2 Antibody, Zinc finger BED domain-containing protein 2
<b>Host Species:</b>	Rabbit
<b>Clonality:</b>	Polyclonal
<b>Format:</b>	IgG

**Target Details**

<b>Gene Name:</b>	ZBED2
<b>Reactivity:</b>	Human
<b>Immunogen Type:</b>	Conjugated Peptide
<b>Immunogen:</b>	Anti-ZBED2 antibody was prepared from whole rabbit serum produced by repeated immunizations with a 15 amino acid synthetic peptide from near the N-terminus of human ZBED2.

**Purity/Specificity:** Anti-ZBED2 Antibody was affinity purified from monospecific antiserum by immunoaffinity chromatography. This antibody is predicted to have no cross-reactivity to ZBED1 or ZBED3.

**Relevant Links:**

- [UniProtKB - Q9BTP6](#)
- [GeneID - 79413](#)
- [NCBI - NP\\_078784.2](#)

## Application Details

**Tested Applications:** ELISA, IHC, WB

**Application Note:** Anti-ZBED2 Antibody has been tested for use in ELISA, Western Blotting, Immunocytochemistry. Specific conditions for reactivity should be optimized by the end user. Expect a band at approximately 25 kDa in Western Blots of specific cell lysates and tissues.

**Assay Dilutions:** All assays should be optimized by the user. Recommended dilutions (if any) may be listed below.

**ELISA:** 1:10,000 - 1:20,000

**WB:** 1-2 µg/mL

## Formulation

**Physical State:** Liquid (sterile filtered)

**Concentration:** 1 mg/mL by UV absorbance at 280 nm

**Buffer:** 0.01 M Sodium Phosphate, 0.25 M Sodium Chloride, pH 7.2

**Preservative:** 0.02% (w/v) Sodium Azide

**Stabilizer:** None

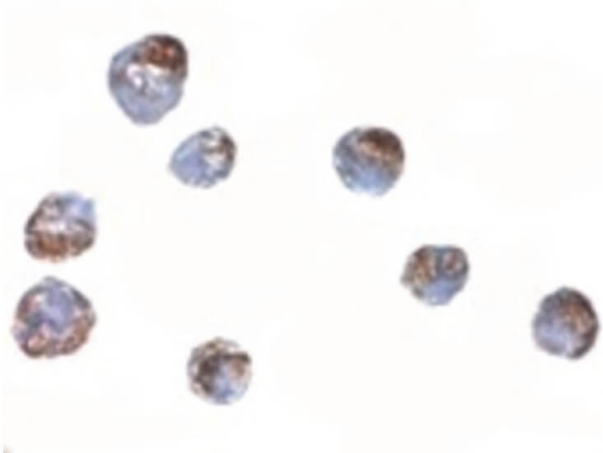
## Shipping & Handling

**Shipping Condition:** Dry Ice

**Storage Condition:** Store vial at -20° C prior to opening. Aliquot contents and freeze at -20° C or below for extended storage. Avoid cycles of freezing and thawing. Centrifuge product if not completely clear after standing at room temperature. This product is stable for several weeks at 4° C as an undiluted liquid. Dilute only prior to immediate use.

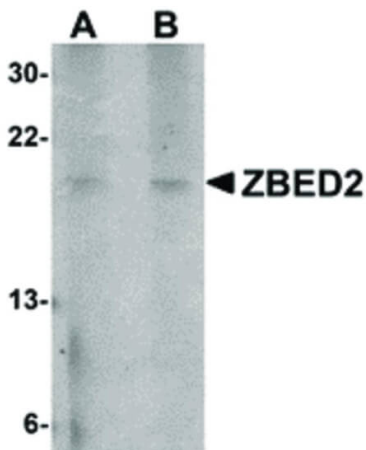
**Expiration:** Expiration date is one (1) year from date of receipt.

## Images



### Immunohistochemistry

Immunocytochemistry of ZBED2 antibody. Tissue: A549 cells. Fixation: formalin fixed paraffin embedded. Antigen retrieval: not required. Primary antibody: ZBED2 antibody at 5 µg/mL for 1 h at RT. Secondary antibody: Peroxidase rabbit secondary antibody at 1:10,000 for 45 min at RT. Localization: ZBED2 is nuclear. Staining: ZBED2 as precipitated blue signal with brown counterstain.



### Western Blot

Western Blot of ZBED2 antibody. Lane 1: A549 cell lysate with ZBED2 antibody at 1 µg/mL. Lane 2: A549 cell lysate with ZBED2 antibody at 2 µg/mL. Load: 35 µg per lane. Secondary antibody: Peroxidase rabbit secondary antibody at 1:10,000 for 45 min at RT. Block: 5% BLOTTO overnight at 4°C. Predicted/Observed size: 25 kDa, 20 kDa for ZBED2. Other band(s): ZBED2 splice variants and isoforms.

## Disclaimer

This product is for research use only and is not intended for therapeutic or diagnostic applications. Please contact a technical service representative for more information. All products of animal origin manufactured by Rockland Immunochemicals are derived from starting materials of North American origin. Collection was performed in United States Department of Agriculture (USDA) inspected facilities and all materials have been inspected and certified to be free of disease and suitable for exportation. All properties listed are typical characteristics and are not specifications. All suggestions and data are offered in good faith but without guarantee as conditions and methods of use of our products are beyond our control. All claims must be made within 30 days following the date of delivery. The prospective user must determine the suitability of our materials before adopting them on a commercial scale. Suggested uses of our products are not recommendations to use our products in violation of any patent or as a license under any patent of Rockland Immunochemicals, Inc. If you require a commercial license to use this material and do not have one, then return this material, unopened to: Rockland Inc., P.O. BOX 5199, Limerick, Pennsylvania, USA.