

Datasheet for 600-401-G95**DEDAF Antibody****Overview**

Description:	Anti-DEDAF (RABBIT) Antibody - 600-401-G95
Item No.:	600-401-G95
Size:	100 µg
Applications:	ELISA, IF, IHC, WB
Reactivity:	Human, Mouse, Rat
Host Species:	Rabbit

Product Details

Background:	DEDAF antibody detects human DEDAF. Apoptosis is related to many diseases and induced by a family of cell death receptors and their ligands. Cell death signals are transduced by death domain (DD) death effector domain (DED), and caspase recruitment domain (CARD) containing molecules. Several molecules including caspases and adaptor FADD contain DEDs. A novel protein that interacts with DED of caspase-8 and 10, and FADD was identified recently and designated DEDAF for DED associated factor. DEDAF is identical to the transcriptional repressor RYBP. DEDAF/RYPB is expressed in multiple tissues and cell lines. DEDAF interacts with FADD and augments the formation of CD95/FADD/caspase-8 complexes at the cell membrane, and interacts with DED-containing DNA binding protein (DEDD) in the nucleus indicating it is involved in the regulation of both cytoplasmic and nuclear events of apoptosis. Anti-DEDAF antibodies are ideal for investigators involved in Apoptosis and NFkappaB research.
Synonyms:	RING1 and YY1-binding protein, Apoptin-associating protein 1, APAP-1, Death effector domain-associated factor, DED-associated factor, YY1 and E4TF1-associated factor 1, RYBP, DEDAF, YEAF1
Host Species:	Rabbit
Clonality:	Polyclonal
Format:	IgG

Target Details

Gene Name:	RYBP
Reactivity:	Human, Mouse, Rat

Immunogen Type:	Conjugated Peptide
Immunogen:	DEDAF Antibody was produced from whole rabbit serum prepared by repeated immunizations with a synthetic peptide corresponding to an internal region of human DEDAF. The sequence is identical to that of mouse origin.
Purity/Specificity:	Anti-DEDAF Antibody was affinity purified from monospecific antiserum by immunoaffinity purification. A BLAST analysis was used to suggest cross-reactivity with DEDAF with Human, Mouse and Rat based on 100% homology with the immunizing sequence. Cross-reactivity with DEDAF from other sources has not been determined.
Relevant Links:	<ul style="list-style-type: none">• UniProtKB - Q8N488• GenelD - 23429

Application Details

Tested Applications:	ELISA, IF, IHC, WB
Application Note:	Anti-DEDAF Antibody is tested for use in E, WB, IF, and IHC. Expect a band approximately ~24.8 kDa on specific lysates. Western Blot tested in human and mouse samples; Immunohistochemistry in mouse samples, and Immunofluorescence in human and mouse samples. Specific conditions for reactivity should be optimized by the end user.
Assay Dilutions:	All assays should be optimized by the user. Recommended dilutions (if any) may be listed below.
IF:	20µg/mL
IHC:	5µg/mL
WB:	1µg/mL

Formulation

Physical State:	Liquid (sterile filtered)
Concentration:	1 mg/mL by UV absorbance at 280 nm
Buffer:	0.02 M Potassium Phosphate, 0.15 M Sodium Chloride, pH 7.2
Preservative:	0.02% (w/v) Sodium Azide
Stabilizer:	None

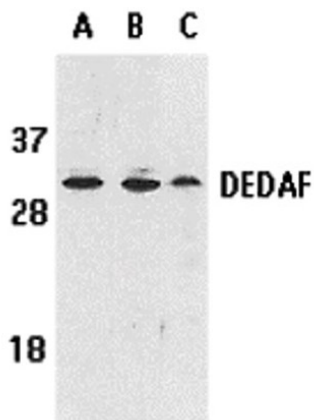
Shipping & Handling

Shipping Condition:	Wet Ice
----------------------------	---------

Storage Condition: Antibody can be stored at 4°C up to one year. Antibodies should not be exposed to prolonged high temperatures.

Expiration: Expiration date is one (1) year from date of receipt.

Images

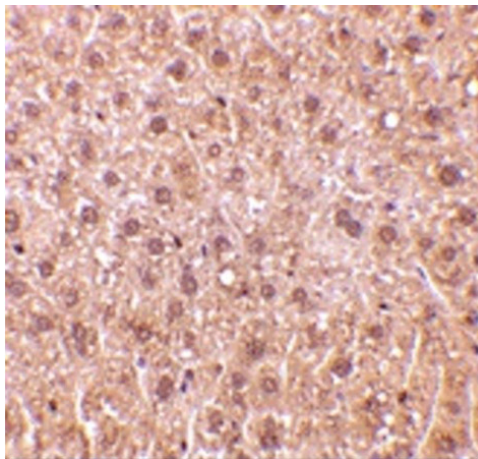


Western Blot

Western blot analysis of DEDAF.

Load: human A549 (lane A), HepG2 (lane B), and mouse 3T3 (lane C) cell lysates.

Primary Antibody: Anti-DEDAF antibody at 1 µg/ml.

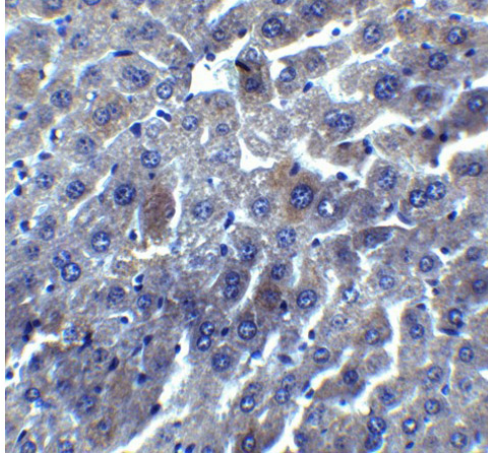


Immunohistochemistry

Immunohistochemistry of DEDAF.

Tissue: mouse liver tissue.

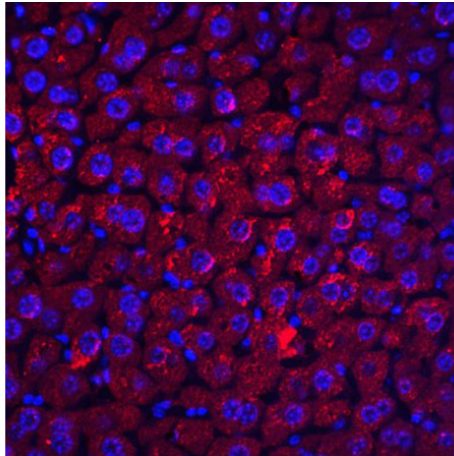
Primary Antibody: Anti-DEDAF antibody at 10 µg/mL.

**Immunohistochemistry**

Immunohistochemistry of DEDAF.

Tissue: mouse liver tissue.

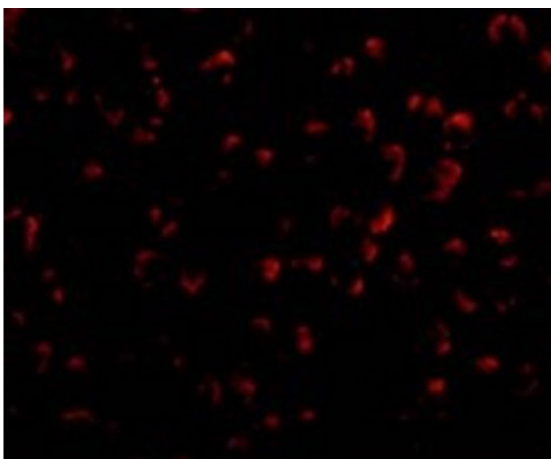
Primary Antibody: Anti-DEDAF antibody at 5 $\mu\text{g}/\text{mL}$.

**Immunofluorescence Microscopy**

Immunofluorescence of DEDAF.

Tissue: mouse liver tissue.

Primary Antibody: Anti-DEDAF antibody at 20 $\mu\text{g}/\text{ml}$.

**Immunofluorescence Microscopy**

Immunofluorescence of DEDAF.

Cells: A549 cells.

Primary Antibody: Anti-DEDAF antibody at 20 $\mu\text{g}/\text{mL}$.

Disclaimer

This product is for research use only and is not intended for therapeutic or diagnostic applications. Please contact a technical service representative for more information. All products of animal origin manufactured by Rockland Immunochemicals are derived from starting materials of North American origin. Collection was performed in United States Department of Agriculture (USDA) inspected facilities and all materials have been inspected and certified to be free of disease and suitable for exportation. All properties listed are typical characteristics and are not specifications. All suggestions and data are offered in good faith but without guarantee as conditions and methods of use of our products are beyond our control. All claims must be made within 30 days following the date of delivery. The prospective user must determine the suitability of our materials before adopting them on a commercial scale. Suggested uses of our products are not recommendations to use our products in violation of any patent or as a license under any patent of Rockland Immunochemicals, Inc. If you require a commercial license to use this material and do not have one, then return this material, unopened to: Rockland Inc., P.O. BOX 5199, Limerick, Pennsylvania, USA.