

Datasheet for 600-401-G86**BNIP3L Antibody****Overview**

Description:	Anti-BNIP3L (RABBIT) Antibody - 600-401-G86
Item No.:	600-401-G86
Size:	100 µg
Applications:	ELISA, IF, IHC, WB
Reactivity:	Human
Host Species:	Rabbit

Product Details

Background: Bnip3L antibody detects human origin. Members in the Bcl-2 family are critical regulators of apoptosis by either inhibiting or promoting cell death. Bcl-2 homology 3 (BH3) domain is a potent death domain. BH3 domain containing pro-apoptotic proteins, including Bad, Bax, Bid, Bik, Hrk, Nip3, and Bim, form a growing subclass of the Bcl-2 family. A novel BH3 domain containing protein was recently identified and designated Bnip3L, Bnip3alpha, and Nix (for Nip3-like protein X). Bnip3L/Bnip3alpha/Nix is a homolog of the E1B 19K/Bcl-2 binding and pro-apoptotic protein Bnip3. Overexpression of Bnip3L induces apoptosis. Bnip3L interacts with and overcomes suppresses by Bcl-2 and Bcl-xL. Bnip3L is localized in mitochondria. The messenger RNA of Bnip3L is ubiquitously expressed in human tissues. Bnip3L and Bnip3 form a new subfamily of the pro-apoptotic mitochondrial proteins. Anti-Bnip3L antibodies are ideal for investigators involved in Apoptosis research.

Synonyms:	BNIP3A, BNIP3H, NIX
Host Species:	Rabbit
Clonality:	Polyclonal
Format:	IgG

Target Details

Gene Name:	BNIP3L
Reactivity:	Human
Immunogen Type:	Conjugated Peptide

Immunogen:	Bnip3L Antibody was raised against a peptide corresponding to amino acids 77 to 92 of human origin, which are identical to those of mouse Bnip3L.
Purity/Specificity:	Anti-Bnip3L Antibody was affinity purified from monospecific antiserum by immunoaffinity purification. A BLAST analysis was used to suggest cross-reactivity with Bnip3L with Human based on 100% homology with the immunizing sequence. Cross-reactivity with Bnip3L from other sources has not been determined.
Relevant Links:	<ul style="list-style-type: none">• NCBI - NP_004322• UniProtKB - O60238• GeneID - 665

Application Details

Tested Applications:	ELISA, IF, IHC, WB
Application Note:	Anti-Bnip3L Antibody is tested for use in E, WB, IF, and IHC. Expect a band approximately ~23.9 kDa on specific lysates. Western Blot, Immunohistochemistry, and Immunofluorescence tested in human samples. Specific conditions for reactivity should be optimized by the end user.
Assay Dilutions:	All assays should be optimized by the user. Recommended dilutions (if any) may be listed below.
IF:	10µg/mL
IHC:	2µg/mL
WB:	1µg/mL

Formulation

Physical State:	Liquid (sterile filtered)
Concentration:	1 mg/mL by UV absorbance at 280 nm
Buffer:	0.02 M Potassium Phosphate, 0.15 M Sodium Chloride, pH 7.2
Preservative:	0.02% (w/v) Sodium Azide
Stabilizer:	None

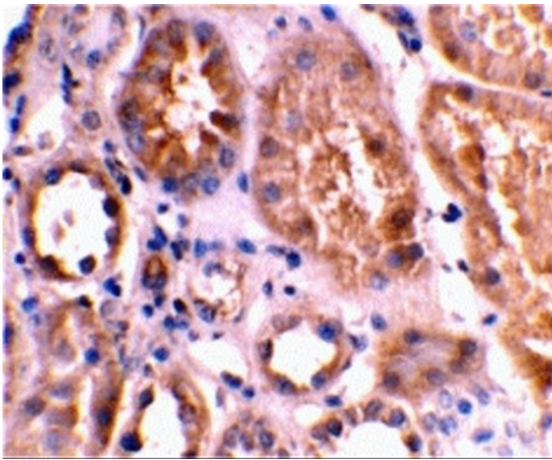
Shipping & Handling

Shipping Condition:	Dry Ice
----------------------------	---------

Storage Condition: Store vial at -20° C prior to opening. Aliquot contents and freeze at -20° C or below for extended storage. Avoid cycles of freezing and thawing. Centrifuge product if not completely clear after standing at room temperature. This product is stable for several weeks at 4° C as an undiluted liquid. Dilute only prior to immediate use.

Expiration: Expiration date is one (1) year from date of receipt.

Images

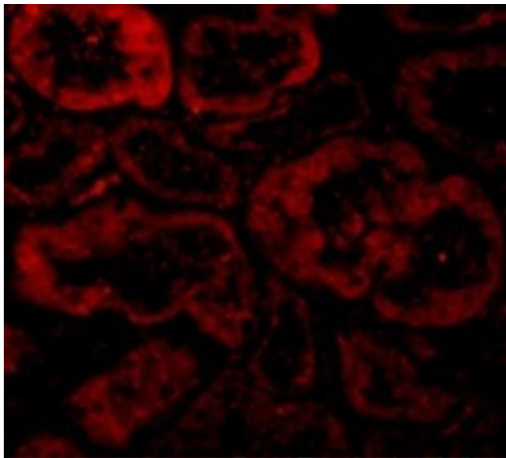


Immunohistochemistry

Immunohistochemical staining using Anti-BNIP3L.

Tissue: human kidney tissue.

Primary Antibody: Anti-Bnip3L antibody at 2 µg/mL.

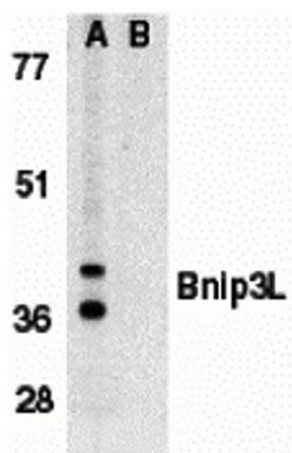


Immunofluorescence Microscopy

Immunofluorescence of Bnip3L.

Tissue: Human Kidney tissue.

Primary Antibody: Anti-Bnip3L antibody at 10 µg/mL.

**Western Blot**

Western blot analysis of Bnip3L.

Load: K562 whole cell lysate.

Primary Antibody: Bnip3L antibody at 1 μ g/mL in (A) the absence, or (B) presence of immunogenic peptide.

Disclaimer

This product is for research use only and is not intended for therapeutic or diagnostic applications. Please contact a technical service representative for more information. All products of animal origin manufactured by Rockland Immunochemicals are derived from starting materials of North American origin. Collection was performed in United States Department of Agriculture (USDA) inspected facilities and all materials have been inspected and certified to be free of disease and suitable for exportation. All properties listed are typical characteristics and are not specifications. All suggestions and data are offered in good faith but without guarantee as conditions and methods of use of our products are beyond our control. All claims must be made within 30 days following the date of delivery. The prospective user must determine the suitability of our materials before adopting them on a commercial scale. Suggested uses of our products are not recommendations to use our products in violation of any patent or as a license under any patent of Rockland Immunochemicals, Inc. If you require a commercial license to use this material and do not have one, then return this material, unopened to: Rockland Inc., P.O. BOX 5199, Limerick, Pennsylvania, USA.