

Datasheet for 600-401-G77**APRIL Antibody****Overview**

Description:	Anti-APRIL (RABBIT) Antibody - 600-401-G77
Item No.:	600-401-G77
Size:	100 µg
Applications:	ELISA, IHC, WB
Reactivity:	Human, Mouse
Host Species:	Rabbit

Product Details

Background:	APRIL Antibody detects of human APRIL. Members in the TNF superfamily regulate immune responses and induce apoptosis. A novel member in the TNF family was recently identified by several groups and designated APRIL (for a proliferation-inducing ligand), TALL-2 (for TNF- and ApoL-related Leukocyte-expressed Ligand 2), and TRDL-1alpha (for TNF related death ligand 1alpha) in human and mouse. Two receptors for APRIL were recently identified and designated TACI and BCMA. APRIL stimulates B and T cell proliferation, triggers humoral immune responses, activates NF-kappaB, and induces cell death. APRIL and its close relative of BlyS and their receptors BCMA and TACI are involved in diseases of autoimmunity and cancer. Anti-APRIL antibodies are ideal for investigators involved in Cancer and NFkappaB research.
Synonyms:	APRIL, TALL2, ZTNF2
Host Species:	Rabbit
Clonality:	Polyclonal
Format:	IgG

Target Details

Gene Name:	TNFSF13
Reactivity:	Human, Mouse
Immunogen Type:	Conjugated Peptide

Immunogen:	APRIL Antibody was produced from whole rabbit serum prepared by repeated immunizations with a synthetic peptide corresponding to amino acids within a extracellular domain of human APRIL.
Purity/Specificity:	Anti-APRIL Antibody was affinity purified from monospecific antiserum by immunoaffinity purification. A BLAST analysis was used to suggest cross-reactivity with APRIL with Human and Mouse based on 100% homology with the immunizing sequence. Cross-reactivity with APRIL from other sources has not been determined.
Relevant Links:	<ul style="list-style-type: none">• NCBI - NP_003799• UniProtKB - O75888• GenelD - 8741

Application Details

Tested Applications:	ELISA, IHC, WB
Application Note:	Anti-APRIL Antibody is tested for use in E, WB, and IHC. Expect a band approximately ~27.4 kDa on specific lysates. Western Blot and Immunohistochemistry tested in human samples. Specific conditions for reactivity should be optimized by the end user.
Assay Dilutions:	All assays should be optimized by the user. Recommended dilutions (if any) may be listed below.
IHC:	10µg/mL
WB:	1-4 ug/ml

Formulation

Physical State:	Liquid (sterile filtered)
Concentration:	1 mg/mL by UV absorbance at 280 nm
Buffer:	0.02 M Potassium Phosphate, 0.15 M Sodium Chloride, pH 7.2
Preservative:	0.02% (w/v) Sodium Azide
Stabilizer:	None

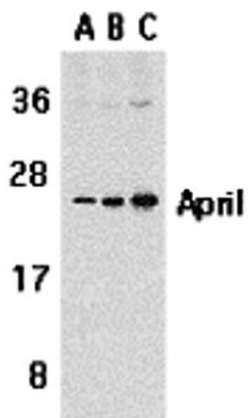
Shipping & Handling

Shipping Condition:	Dry Ice
----------------------------	---------

Storage Condition: Store vial at -20° C prior to opening. Aliquot contents and freeze at -20° C or below for extended storage. Avoid cycles of freezing and thawing. Centrifuge product if not completely clear after standing at room temperature. This product is stable for several weeks at 4° C as an undiluted liquid. Dilute only prior to immediate use.

Expiration: Expiration date is one (1) year from date of receipt.

Images

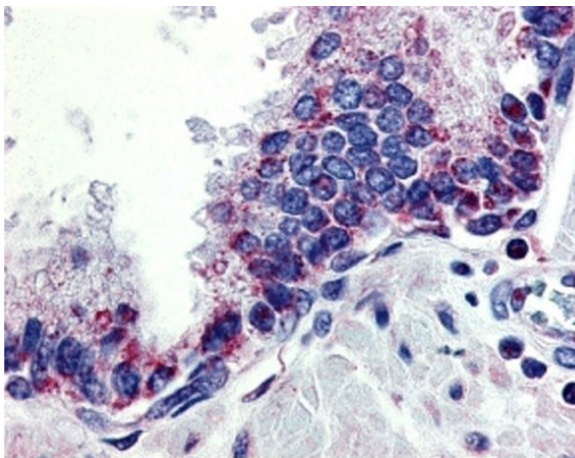


Western Blot

Western blot analysis of APRIL.

Load: Jurkat cells.

Primary Antibody: Anti-APRIL antibody at 1 µg/mL (A), 2 µg/mL (B), and 4 µg/mL (C).



Immunohistochemistry

Immunohistochemistry of APRIL.

Tissue: human prostate tissue.

Primary Antibody: APRIL antibody at 10 µg/mL.

Disclaimer

This product is for research use only and is not intended for therapeutic or diagnostic applications. Please contact a technical service representative for more information. All products of animal origin manufactured by Rockland Immunochemicals are derived from starting materials of North American origin. Collection was performed in United States Department of Agriculture (USDA) inspected facilities and all materials have been inspected and certified to be free of disease and suitable for exportation. All properties listed are typical characteristics and are not specifications. All suggestions and data are offered in good faith but without guarantee as conditions and methods of use of our products are beyond our control. All claims must be made within 30 days following the date of delivery. The prospective user must determine the suitability of our materials before adopting them on a commercial scale. Suggested uses of our products are not recommendations to use our products in violation of any patent or as a license under any patent of Rockland Immunochemicals, Inc. If you require a commercial license to use this material and do not have one, then return this material, unopened to: Rockland Inc., P.O. BOX 5199, Limerick, Pennsylvania, USA.