

Datasheet for 600-401-G68

GAB1 phospho Y659 Antibody**Overview**

Description:	Anti-GAB1 pY659 (RABBIT) Antibody - 600-401-G68
Item No.:	600-401-G68
Size:	100 µg
Applications:	ELISA, WB
Reactivity:	Human
Host Species:	Rabbit

Product Details

Background: GAB1 pY659 antibody detects phosphorylated GAB1. GAB1 is a member of the IRS1-like multisubstrate docking protein family. The protein is an important mediator of branching tubulogenesis and plays a central role in cellular growth response, transformation and apoptosis. Two transcript variants encoding different isoforms have been found for this gene. GAB1 plays a role in intracellular signaling cascades triggered by activated receptor-type kinases. It is known to play a role in FGFR1 signaling and is probably involved in signaling by the epidermal growth factor receptor (EGFR) and the insulin receptor (INSR). GAB1 interacts with GRB2 and with other SH2-containing proteins. It is known to interact with phosphorylated LAT2, PTPRJ, FRS2, GRB2, PIK3R1 and SOS1. GAB1 gets phosphorylated in response to FGFR1 activation. This tyrosine phosphorylation of GAB1 mediates interaction with several proteins that contain SH2 domains. Anti-GAB1 Antibody is ideal for investigators involved in Cell Signaling, Cancer, Neuroscience and Signal Transduction research.

Synonyms:	rabbit anti-GAB1 pY659 antibody, GAB-1, GAB 1, GRB2-associated-binding protein 1, GRB2-associated binder 1, Growth factor receptor bound protein 2-associated protein 1
Host Species:	Rabbit
Clonality:	Polyclonal
Format:	IgG

Target Details

Gene Name:	GAB1
Reactivity:	Human

PTM Specificity:	Phosphorylation
Immunogen Type:	Conjugated Peptide
Immunogen:	Anti-GAB1 pY656 Antibody was produced in rabbits by repeated immunizations with a synthetic peptide corresponding to residues surrounding Y659 of human GAB1 protein.
Purity/Specificity:	Anti-GAB1pY659 was prepared from monospecific antiserum by immunoaffinity chromatography using phospho peptide coupled to agarose beads followed by solid phase adsorptions against non-phospho peptide and non-specific peptide to remove any unwanted reactivities. Assay by immunoelectrophoresis resulted in a single precipitin arc against anti-Rabbit Serum. Antibody is specific for human GAB1 protein phosphorylated at Y659. Cross-reactivity against GAB1 from other species may occur but has not yet been tested.
Relevant Links:	<ul style="list-style-type: none">• UniProtKB - Q13480• GeneID - 2549

Application Details

Tested Applications:	ELISA, WB
Application Note:	Anti-GAB1 pY656 Antibody has been tested for use in ELISA and by western blot. Specific conditions for reactivity should be optimized by the end user. Expect a predominant band at 76.6 kDa by western blotting in the appropriate cell lysate or extract. This phospho-specific polyclonal antibody reacts with human GAB1 pY659 and shows minimal reactivity by ELISA against the non-phosphorylated form of the immunizing peptide.
Assay Dilutions:	All assays should be optimized by the user. Recommended dilutions (if any) may be listed below.
ELISA:	1:2,000 - 1:10,000
WB:	1:500-1:2000

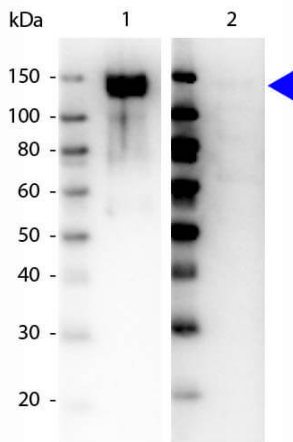
Formulation

Physical State:	Liquid (sterile filtered)
Concentration:	1.2 mg/mL by UV absorbance at 280 nm
Buffer:	0.02 M Potassium Phosphate, 0.15 M Sodium Chloride, pH 7.2
Preservative:	0.01% (w/v) Sodium Azide
Stabilizer:	None

Shipping & Handling

Shipping Condition:	Dry Ice
Storage Condition:	Store vial at -20° C prior to opening. Aliquot contents and freeze at -20° C or below for extended storage. Avoid cycles of freezing and thawing. Centrifuge product if not completely clear after standing at room temperature. This product is stable for several weeks at 4° C as an undiluted liquid. Dilute only prior to immediate use.
Expiration:	Expiration date is one (1) year from date of receipt.

Images



Western Blot

Western Blot of Rabbit anti-GAB1 pY659 antibody. Load: Phospho GAB1 rProtein 0.05 µg per lane. Blot Lane 1: GAB1 pY659 primary antibody at 1µg/mL in absence of blocking peptide overnight at 4°C. Blot Lane 2: GAB1 pY659 primary antibody at 1µg/mL incubated with 50µg of GAB1 pY659 peptide overnight at 4°C. Secondary antibody: HRP Goat Anti-Rabbit IgG secondary antibody (p/n 611-103-122) at 1:40,000 for 30 min at RT. Block: (p/n MB-070) Fluorescent blocking buffer for 30 min at RT. Predicted/Observed size: 130 kDa, 130 kDa for GAB1pY659. Other band(s): none.

Disclaimer

This product is for research use only and is not intended for therapeutic or diagnostic applications. Please contact a technical service representative for more information. All products of animal origin manufactured by Rockland Immunochemicals are derived from starting materials of North American origin. Collection was performed in United States Department of Agriculture (USDA) inspected facilities and all materials have been inspected and certified to be free of disease and suitable for exportation. All properties listed are typical characteristics and are not specifications. All suggestions and data are offered in good faith but without guarantee as conditions and methods of use of our products are beyond our control. All claims must be made within 30 days following the date of delivery. The prospective user must determine the suitability of our materials before adopting them on a commercial scale. Suggested uses of our products are not recommendations to use our products in violation of any patent or as a license under any patent of Rockland Immunochemicals, Inc. If you require a commercial license to use this material and do not have one, then return this material, unopened to: Rockland Inc., P.O. BOX 5199, Limerick, Pennsylvania, USA.