

**Datasheet for 600-401-FZ3****Wnt10a Antibody****Overview**

<b>Description:</b>	Anti-Wnt10a (RABBIT) Antibody - 600-401-FZ3
<b>Item No.:</b>	600-401-FZ3
<b>Size:</b>	100 µg
<b>Applications:</b>	ELISA, IF, IHC, WB
<b>Reactivity:</b>	Human, Mouse, Rat
<b>Host Species:</b>	Rabbit

**Product Details**

<b>Background:</b>	Wnt10a is a member of the Wnt family, a gene family that encodes secreted signaling proteins that play crucial roles in normal development such as regulation of cell fate and patterning during embryogenesis as well as neoplastic transformation. Elevated levels of Wnt10a have been detected in several human tumors and cancer cell lines including colorectal cancer and chronic lymphocytic leukemia and it has been suggested that uncontrolled Wnt signaling may contribute to the defect in apoptosis that characterizes these malignancies. Recently, a mutation in Wnt10a was found to be associated with odonto-onycho-dermal dysplasia, an autosomal recessive ectodermal dysplasia.
<b>Synonyms:</b>	Wnt10a Antibody, OODD, SSPS, STHAG4, Protein Wnt-10a
<b>Host Species:</b>	Rabbit
<b>Clonality:</b>	Polyclonal
<b>Format:</b>	IgG

**Target Details**

<b>Gene Name:</b>	WNT10A
<b>Reactivity:</b>	Human, Mouse, Rat
<b>Immunogen Type:</b>	Conjugated Peptide
<b>Immunogen:</b>	Anti-Wnt10a antibody was prepared from whole rabbit serum produced by repeated immunizations with a 14 amino acid synthetic peptide from near the C-terminus of human Wnt10a. The immunogen is located within amino acids 300 - 350 of Wnt10a.

**Purity/Specificity:** Anti-Wnt10a Antibody was affinity purified from monospecific antiserum by immunoaffinity chromatography. Despite the high homology of Wnt10a to Wnt10b, this Wnt10a antibody will not cross-react with Wnt10b.

**Relevant Links:**

- [UniProtKB - Q9GZT5](#)
- [GeneID - 80326](#)
- [NCBI - NP\\_079492.2](#)

## Application Details

**Tested Applications:** ELISA, IF, IHC, WB

**Application Note:** Anti-Wnt10a Antibody has been tested for use in ELISA, Western Blotting, Immunohistochemistry-P, and Immunofluorescence. Specific conditions for reactivity should be optimized by the end user. Expect a band at approximately 46 kDa in Western Blots of specific cell lysates and tissues. Positive control: RAW 264.7 cell lysate.

**Assay Dilutions:** All assays should be optimized by the user. Recommended dilutions (if any) may be listed below.

**ELISA:** 1:10,000 - 1:20,000

**IF:** 20 µg/mL

**IHC:** 5-10 µg/mL

**WB:** 1-2 µg/mL

## Formulation

**Physical State:** Liquid (sterile filtered)

**Concentration:** 1 mg/mL by UV absorbance at 280 nm

**Buffer:** 0.01 M Sodium Phosphate, 0.25 M Sodium Chloride, pH 7.2

**Preservative:** 0.02% (w/v) Sodium Azide

**Stabilizer:** None

## Shipping & Handling

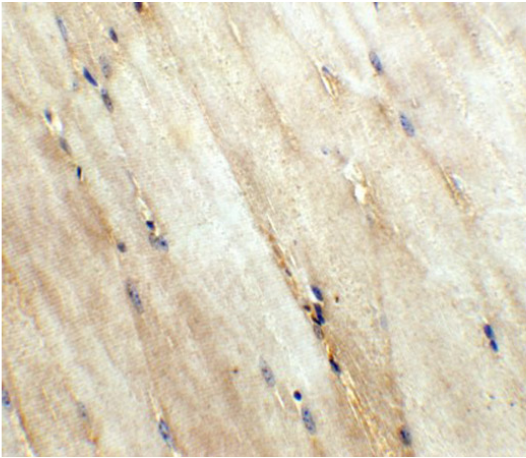
**Shipping Condition:** Wet Ice

**Storage Condition:** Antibody can be stored at 4°C up to one year. Antibodies should not be exposed to prolonged high temperatures.

**Expiration:** Expiration date is one (1) year from date of receipt.

---

## Images

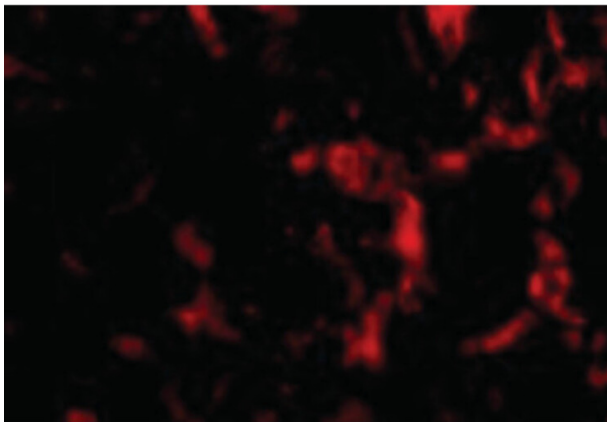


### **Immunohistochemistry**

Immunohistochemistry of Wnt10a.

Tissue: mouse skeletal muscle tissue.

Primary Antibody: Wnt10a antibody at 5 µg/ml.



### **Immunofluorescence Microscopy**

Immunofluorescence Microscopy of Wnt10a antibody.

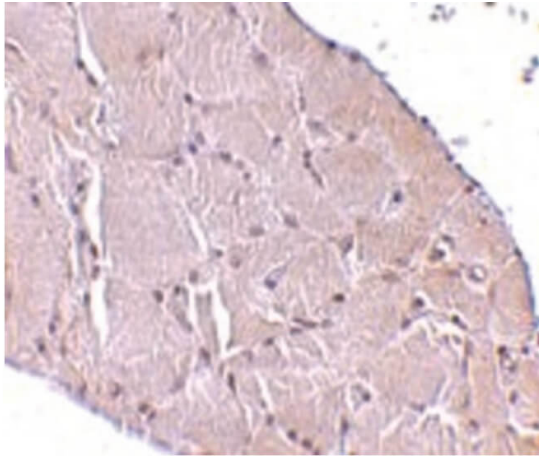
Tissue: Human skeletal muscle tissue. Fixation: 0.5% PFA.

Antigen retrieval: not required. Primary antibody: Wnt10a

antibody at 20 µg/mL for 1 h at RT. Secondary antibody:

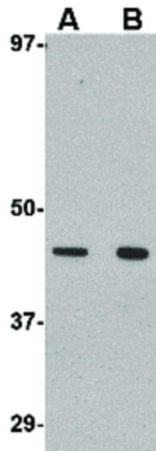
Fluorescein rabbit secondary antibody at 1:10,000 for 45

min at RT. Staining: Wnt10a as a red fluorescent signal.



### Immunohistochemistry

Immunohistochemistry of Wnt10a antibody. Tissue: Human skeletal muscle tissue. Fixation: formalin fixed paraffin embedded. Antigen retrieval: not required. Primary antibody: Wnt10a antibody at 10  $\mu\text{g}/\text{mL}$  for 1 h at RT. Secondary antibody: Peroxidase rabbit secondary antibody at 1:10,000 for 45 min at RT. Localization: Wnt10a is nuclear and occasionally cytoplasmic. Staining: Wnt10a as precipitated red signal with hematoxylin purple nuclear counterstain.



### Western Blot

Western Blot of Wnt10a antibody.

Load: 35  $\mu\text{g}$  RAW264.7 cell lysate per lane.

Primary Antibody: Anti-Wnt10a at (Lane A: 1  $\mu\text{g}/\text{mL}$ . Lane B: 2  $\mu\text{g}/\text{mL}$ ) 1h incubation at RT in 5% NFDN/TBST.

Secondary antibody: Peroxidase rabbit secondary antibody at 1:10,000.

Predicted/Observed size: 380.1 kDa, ~40 kDa for Wnt10a.

## Disclaimer

This product is for research use only and is not intended for therapeutic or diagnostic applications. Please contact a technical service representative for more information. All products of animal origin manufactured by Rockland Immunochemicals are derived from starting materials of North American origin. Collection was performed in United States Department of Agriculture (USDA) inspected facilities and all materials have been inspected and certified to be free of disease and suitable for exportation. All properties listed are typical characteristics and are not specifications. All suggestions and data are offered in good faith but without guarantee as conditions and methods of use of our products are beyond our control. All claims must be made within 30 days following the date of delivery. The prospective user must determine the suitability of our materials before adopting them on a commercial scale. Suggested uses of our products are not recommendations to use our products in violation of any patent or as a license under any patent of Rockland Immunochemicals, Inc. If you require a commercial license to use this material and do not have one, then return this material, unopened to: Rockland Inc., P.O. BOX 5199, Limerick, Pennsylvania, USA.