

Datasheet for 600-401-FY3**West Nile Virus Core Antibody****Overview**

Description:	Anti-West Nile Virus Core (RABBIT) Antibody - 600-401-FY3
Item No.:	600-401-FY3
Size:	100 µg
Applications:	ELISA, IHC, WB
Reactivity:	Virus
Host Species:	Rabbit

Product Details

Background:	West Nile Virus (WNV) is a member of the Flaviviridae, a plus-stranded virus family that includes St. Louis encephalitis virus, yellow fever virus, and Dengue virus. WNV was initially isolated in 1937 in the West Nile region of Uganda and has become prevalent in Africa, Asia, and Europe. It has rapidly spread across the United States with cases being observed in every continental state. Virus particles consist of a dense core made up of the core/capsid protein encapsulating the RNA genome surrounded by a membrane envelope embedded with envelope and matrix proteins which play a major role for WNV entry into target cells. The viral core protein is thought to contribute to the WNV-associated inflammation via apoptosis induced through the caspase-9 pathway as delivery of core gene delivery into the striatum of mouse brain and skeletal muscle resulted in cell death and inflammation.
Synonyms:	West Nile Virus Core Antibody, Genome polyprotein, Core protein, NS1
Host Species:	Rabbit
Clonality:	Polyclonal
Format:	IgG

Target Details

Gene Name:	WNVgp1
Reactivity:	Virus
Immunogen Type:	Conjugated Peptide

Immunogen:	Anti-West Nile Virus Core antibody was prepared from whole rabbit serum produced by repeated immunizations with a synthetic peptide corresponding to 15 amino acids near the C-terminus of the West Nile Virus core protein.
Purity/Specificity:	Anti-West Nile Virus Core Antibody was affinity purified from monospecific antiserum by immunoaffinity chromatography. Cross reactivity with West Nile Virus Core from other sources has not been determined.
Relevant Links:	<ul style="list-style-type: none">• UniProtKB - P06935• GeneID - 912267• NCBI - NP_776012

Application Details

Tested Applications:	ELISA, IHC, WB
Application Note:	Anti-West Nile Virus Core Antibody has been tested for use in ELISA, Western Blotting, Immunocytochemistry. Specific conditions for reactivity should be optimized by the end user. Expect a band at approximately 380 kDa in Western Blots of specific cell lysates and tissues.
Assay Dilutions:	All assays should be optimized by the user. Recommended dilutions (if any) may be listed below.
ELISA:	1:10,000
WB:	1 µg/mL

Formulation

Physical State:	Liquid (sterile filtered)
Concentration:	1.0 mg/mL by UV absorbance at 280 nm
Buffer:	0.01 M Sodium Phosphate, 0.25 M Sodium Chloride, pH 7.2
Preservative:	0.02% (w/v) Sodium Azide
Stabilizer:	None

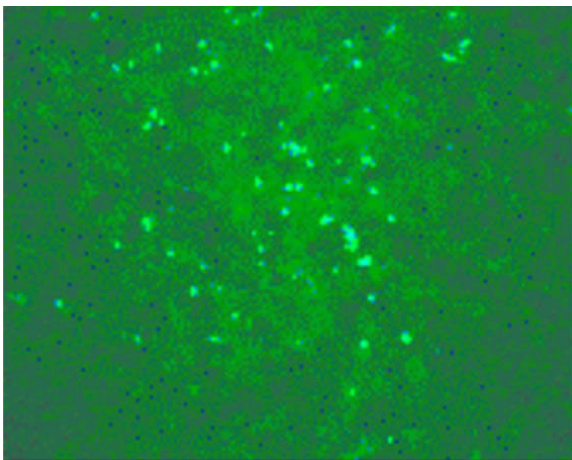
Shipping & Handling

Shipping Condition:	Dry Ice
----------------------------	---------

Storage Condition: Store vial at -20° C prior to opening. Aliquot contents and freeze at -20° C or below for extended storage. Avoid cycles of freezing and thawing. Centrifuge product if not completely clear after standing at room temperature. This product is stable for several weeks at 4° C as an undiluted liquid. Dilute only prior to immediate use.

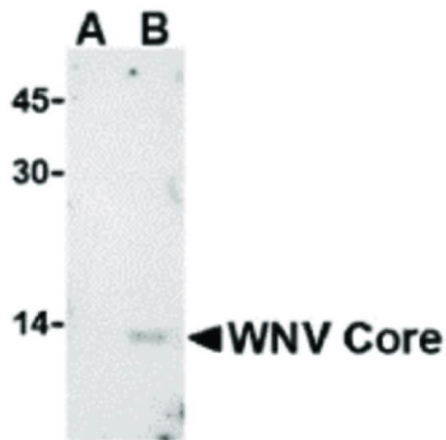
Expiration: Expiration date is one (1) year from date of receipt.

Images



Immunocytochemistry

Immunocytochemistry of WNV Core antibody. Cell Type: transfected Vero cells. Fixation: formalin fixed paraffin embedded. Antigen retrieval: not required. Primary antibody: WNV Core antibody at 20 µg/mL for 1 h at RT. Secondary antibody: Peroxidase rabbit secondary antibody at 1:10,000 for 45 min at RT. Localization: WNV Core is nuclear and occasionally cytoplasmic. Staining: WNV Core is stained with toluidine blue.



Western Blot

Western Blot of WNV Core antibody. Lane A: WNV Core antibody in untransfected HeLa lysate. Lane B: WNV Core antibody in transfected HeLa lysate. Load: 35 µg per lane. Primary antibody: WNV Core antibody at 1 µg/mL for overnight at 4°C. Secondary antibody: Peroxidase rabbit secondary antibody at 1:10,000 for 45 min at RT. Block: 5% BLOTTO overnight at 4°C. Predicted/Observed size: 134 kDa, 13 kDa for WNV Core. Other band(s): WNV Core splice variants and isoforms.

Disclaimer

This product is for research use only and is not intended for therapeutic or diagnostic applications. Please contact a technical service representative for more information. All products of animal origin manufactured by Rockland Immunochemicals are derived from starting materials of North American origin. Collection was performed in United States Department of Agriculture (USDA) inspected facilities and all materials have been inspected and certified to be free of disease and suitable for exportation. All properties listed are typical characteristics and are not specifications. All suggestions and data are offered in good faith but without guarantee as conditions and methods of use of our products are beyond our control. All claims must be made within 30 days following the date of delivery. The prospective user must determine the suitability of our materials before adopting them on a commercial scale. Suggested uses of our products are not recommendations to use our products in violation of any patent or as a license under any patent of Rockland Immunochemicals, Inc. If you require a commercial license to use this material and do not have one, then return this material, unopened to: Rockland Inc., P.O. BOX 5199, Limerick, Pennsylvania, USA.