

Datasheet for 600-401-FY2**WDR92 Antibody****Overview**

Description:	Anti-WDR92 (RABBIT) Antibody - 600-401-FY2
Item No.:	600-401-FY2
Size:	100 µg
Applications:	ELISA, IF, IHC, WB
Reactivity:	Human, Mouse
Host Species:	Rabbit

Product Details

Background:	WD40 repeats are a common structural module in eukaryotic proteins, and proteins containing WD40 domains have a wide range of functions, including signal transduction, cell cycle regulation, RNA splicing, and transcription. One such protein, WDR92, also known as monad, contains two WD40 repeats is widely expressed in human tissues, especially testis. Overexpression of this protein or its binding partner RNA polymerase II-associated protein 3 (RPAP3) potentiated apoptosis and caspase-3 activation induced by TNF- α and cycloheximide, suggesting that WDR92, together with RPAP3, may function as a novel modulator of apoptosis.
Synonyms:	WDR92 Antibody, WD repeat-containing protein 92, WD repeat-containing protein Monad
Host Species:	Rabbit
Clonality:	Polyclonal
Format:	IgG

Target Details

Gene Name:	WDR92
Reactivity:	Human, Mouse
Immunogen Type:	Conjugated Peptide
Immunogen:	Anti-WDR92 antibody was prepared from whole rabbit serum produced by repeated immunizations with a 21 amino acid synthetic peptide near the internal region of human WDR92.

Purity/Specificity: Anti-WDR92 Antibody was affinity purified from monospecific antiserum by immunoaffinity chromatography. Cross reactivity with WDR92 from other sources has not been determined.

Relevant Links:

- [UniProtKB - Q96MX6](#)
- [GeneID - 116143](#)
- [NCBI - NP_001243405.1](#)

Application Details

Tested Applications: ELISA, IF, IHC, WB

Application Note: Anti-WDR92 Antibody has been tested for use in ELISA, Western Blotting, Immunohistochemistry and Immunofluorescence. Specific conditions for reactivity should be optimized by the end user. Expect a band at approximately 40 kDa in Western Blots of specific cell lysates and tissues.

Assay Dilutions: All assays should be optimized by the user. Recommended dilutions (if any) may be listed below.

ELISA: 1:10,000 - 1:20,000

IF: 20 µg/mL

IHC: 10 µg/mL

WB: 1-2 µg/mL

Formulation

Physical State: Liquid (sterile filtered)

Concentration: 1 mg/mL by UV absorbance at 280 nm

Buffer: 0.01 M Sodium Phosphate, 0.25 M Sodium Chloride, pH 7.2

Preservative: 0.02% (w/v) Sodium Azide

Stabilizer: None

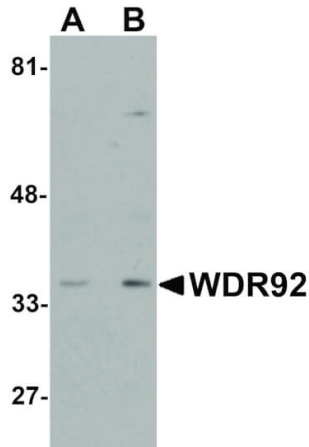
Shipping & Handling

Shipping Condition: Wet Ice

Storage Condition: Antibody can be stored at 4°C up to one year. Antibodies should not be exposed to prolonged high temperatures.

Expiration: Expiration date is one (1) year from date of receipt.

Images

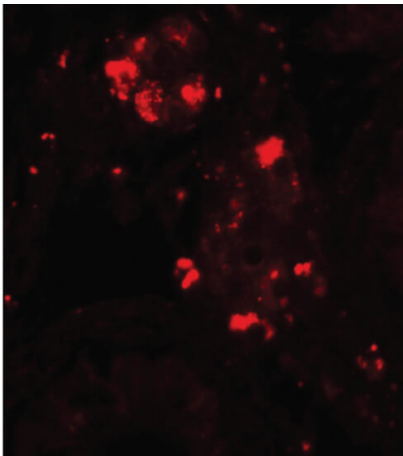


Western Blot

Western Blot of WDR92 antibody. Lane 1: Human kidney tissue lysate with WDR92 antibody at 1 µg/mL. Lane 2: Human kidney tissue lysate with WDR92 antibody at 2 µg/mL. Secondary antibody: Peroxidase rabbit secondary antibody at 1:10,000 for 45 min at RT. Block: 5% BLOTTO overnight at 4°C. Predicted/Observed size: 40 kDa, 35 kDa for WDR92. Other band(s): WDR92 splice variants and isoforms.

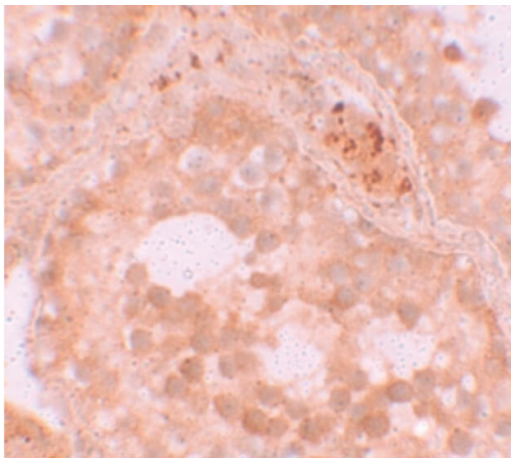
Immunofluorescence Microscopy

Immunofluorescence Microscopy of WDR92 antibody. Tissue: human testis tissue. Fixation: 0.5% PFA. Antigen retrieval: not required. Primary antibody: WDR92 antibody at 20 µg/mL for 1 h at RT. Secondary antibody: Fluorescein rabbit secondary antibody at 1:10,000 for 45 min at RT. Localization: WDR92 is nuclear. Staining: WDR92 as red fluorescent signal.



Immunohistochemistry

Immunohistochemistry of WDR92 antibody. Tissue: Human testis tissue. Fixation: formalin fixed paraffin embedded. Antigen retrieval: not required. Primary antibody: WDR92 antibody at 10 µg/mL for 1 h at RT. Secondary antibody: Peroxidase rabbit secondary antibody at 1:10,000 for 45 min at RT. Localization: WDR92 is nuclear. Staining: WDR92 as precipitated brown signal with purple nuclear counterstain.



Disclaimer

This product is for research use only and is not intended for therapeutic or diagnostic applications. Please contact a technical service representative for more information. All products of animal origin manufactured by Rockland Immunochemicals are derived from starting materials of North American origin. Collection was performed in United States Department of Agriculture (USDA) inspected facilities and all materials have been inspected and certified to be free of disease and suitable for exportation. All properties listed are typical characteristics and are not specifications. All suggestions and data are offered in good faith but without guarantee as conditions and methods of use of our products are beyond our control. All claims must be made within 30 days following the date of delivery. The prospective user must determine the suitability of our materials before adopting them on a commercial scale. Suggested uses of our products are not recommendations to use our products in violation of any patent or as a license under any patent of Rockland Immunochemicals, Inc. If you require a commercial license to use this material and do not have one, then return this material, unopened to: Rockland Inc., P.O. BOX 5199, Limerick, Pennsylvania, USA.