

Datasheet for 600-401-FX2**VPS39 Antibody****Overview**

Description:	Anti-VPS39 (RABBIT) Antibody - 600-401-FX2
Item No.:	600-401-FX2
Size:	100 µg
Applications:	ELISA, IF, IHC, WB
Reactivity:	Human, Mouse, Rat
Host Species:	Rabbit

Product Details

Background:	VPS39 is the mammalian homolog of the yeast vacuolar protein VAM6, that in mammals, promotes lysosome clustering and fusion in vivo. VPS39 is also thought to modulate the TGF-beta response by coupling the TGF-beta receptor complex to the Smad pathway. Similar to the related protein TRAP1, the VPS39 protein is essential for early embryonic development, with mice lacking VPS39 dying at or before E6.5.
Synonyms:	VPS39 Antibody, TLP, VAM6, hVam6p, KIAA0770, TLP, TRAP1-like protein
Host Species:	Rabbit
Clonality:	Polyclonal
Format:	IgG

Target Details

Gene Name:	VPS39
Reactivity:	Human, Mouse, Rat
Immunogen Type:	Conjugated Peptide
Immunogen:	Anti-VPS39 antibody was prepared from whole rabbit serum produced by repeated immunizations with a 18 amino acid synthetic peptide near the C-terminus of human VPS39.
Purity/Specificity:	Anti-VPS39 Antibody was affinity purified from monospecific antiserum by immunoaffinity chromatography. At least four isoforms of VPS39 are known to exist; this antibody will detect all four. VPS39 antibody is predicted not to cross-react with TRAP1.

Relevant Links:	<ul style="list-style-type: none">• UniProtKB - Q96JC1• GeneID - 23339• NCBI - NP_001288067.1
------------------------	-------------------------------------------------------------------------------------------------------------------------------------------------------------------------------

Application Details

Tested Applications:	ELISA, IF, IHC, WB
Application Note:	Anti-VPS39 Antibody has been tested for use in ELISA, Western Blotting, Immunohistochemistry and Immunofluorescence. Specific conditions for reactivity should be optimized by the end user. Expect a band at approximately 102 kDa in Western Blots of specific cell lysates and tissues.
Assay Dilutions:	All assays should be optimized by the user. Recommended dilutions (if any) may be listed below.
ELISA:	1:5000 - 1:10000
IF:	20 µg/mL
IHC:	5 µg/mL
WB:	0.5-1 µg/mL

Formulation

Physical State:	Liquid (sterile filtered)
Concentration:	1 mg/mL by UV absorbance at 280 nm
Buffer:	0.01 M Sodium Phosphate, 0.25 M Sodium Chloride, pH 7.2
Preservative:	0.02% (w/v) Sodium Azide
Stabilizer:	None

Shipping & Handling

Shipping Condition:	Dry Ice
Storage Condition:	Store vial at -20° C prior to opening. Aliquot contents and freeze at -20° C or below for extended storage. Avoid cycles of freezing and thawing. Centrifuge product if not completely clear after standing at room temperature. This product is stable for several weeks at 4° C as an undiluted liquid. Dilute only prior to immediate use.
Expiration:	Expiration date is one (1) year from date of receipt.

Images



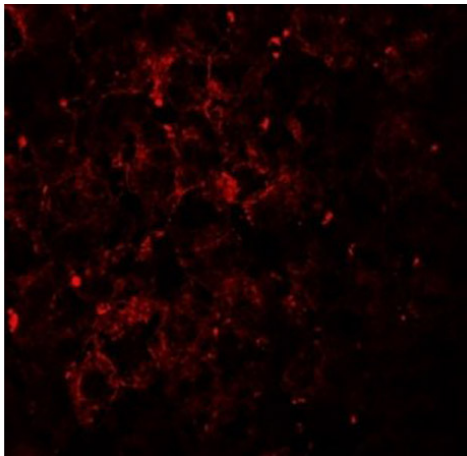
Immunofluorescence Microscopy

Immunofluorescence of VPS39.

Tissue: human liver tissue.

Primary Antibody: VPS39 antibody at 5 $\mu\text{g}/\text{ml}$.

Staining: VPS39 antibody (green), Phalloidin (red), DAPI (blue).

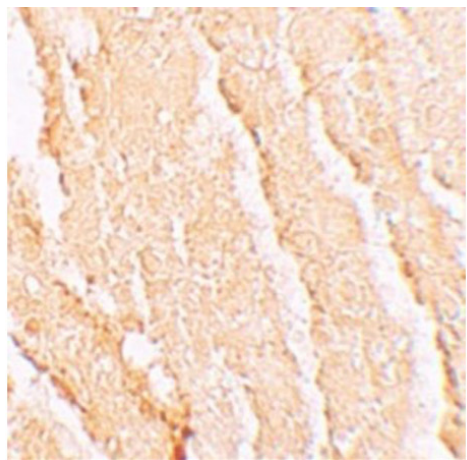


Immunofluorescence Microscopy

Immunofluorescence of VPS39.

Tissue: mouse liver tissue.

Primary Antibody: VPS39 antibody at 20 $\mu\text{g}/\text{mL}$.

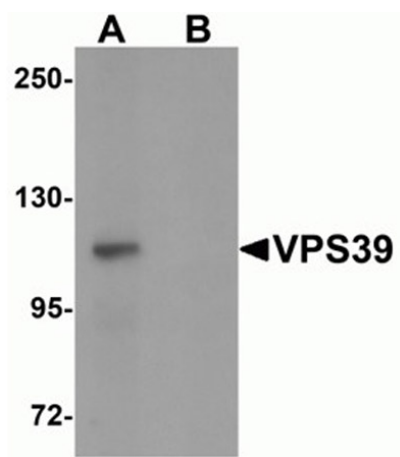


Immunohistochemistry

Immunohistochemistry of VPS39.

Tissue: mouse liver tissue.

Primary Antibody: VPS39 antibody at 5 $\mu\text{g}/\text{mL}$.

**Western Blot**

Western blot analysis of VPS39.

Load: rat liver tissue lysate.

Primary Antibody: VPS39 antibody at 0.5 $\mu\text{g}/\text{mL}$ in (A) the absence and (B) the presence of blocking peptide.

Disclaimer

This product is for research use only and is not intended for therapeutic or diagnostic applications. Please contact a technical service representative for more information. All products of animal origin manufactured by Rockland Immunochemicals are derived from starting materials of North American origin. Collection was performed in United States Department of Agriculture (USDA) inspected facilities and all materials have been inspected and certified to be free of disease and suitable for exportation. All properties listed are typical characteristics and are not specifications. All suggestions and data are offered in good faith but without guarantee as conditions and methods of use of our products are beyond our control. All claims must be made within 30 days following the date of delivery. The prospective user must determine the suitability of our materials before adopting them on a commercial scale. Suggested uses of our products are not recommendations to use our products in violation of any patent or as a license under any patent of Rockland Immunochemicals, Inc. If you require a commercial license to use this material and do not have one, then return this material, unopened to: Rockland Inc., P.O. BOX 5199, Limerick, Pennsylvania, USA.