

Datasheet for 600-401-FW4**Vinculin Antibody****Overview**

Description:	Anti-Vinculin (RABBIT) Antibody - 600-401-FW4
Item No.:	600-401-FW4
Size:	100 µg
Applications:	ELISA, IF, IHC, WB
Reactivity:	Human, Mouse, Rat
Host Species:	Rabbit

Product Details

Background:	Vinculin is a cytoskeletal protein that plays an important role in the regulation of focal adhesions and embryonic development (1). Three structural vinculin domains include an amino-terminal head, a short flexible proline-rich region and a carboxy-terminal tail (2). Expression of vinculin were shown to be affected by the level of actin expression (2,3). Vinculin deficiencies are associated with a decrease in cell adhesion and an increase in cell motility, suggesting a possible role in metastatic growth (4). Defects in VCL are the cause of cardiomyopathy dilated type 1W (CMD1W) (5).
Synonyms:	Vinculin Antibody, MV, MVCL, CMD1W, CMH15, HEL114, Vinculin, Metavinculin, MV
Host Species:	Rabbit
Clonality:	Polyclonal
Format:	IgG

Target Details

Gene Name:	VCL
Reactivity:	Human, Mouse, Rat
Immunogen Type:	Conjugated Peptide
Immunogen:	Anti-Vinculin antibody was prepared from whole rabbit serum produced by repeated immunizations with a 23 amino acid peptide near the internal region of human Vinculin.

Purity/Specificity: Anti-Vinculin antibody was affinity purified from monospecific antiserum by immunoaffinity chromatography. Vinculin antibody is human, mouse and rat reactive. At least three isoforms of Vinculin are known to exist.

Relevant Links:

- [UniProtKB - P18206](#)
- [GeneID - 7414](#)
- [NCBI - NP_003364.1](#)

Application Details

Tested Applications: ELISA, IF, IHC, WB

Application Note: Anti-Vinculin Antibody has been tested for use in ELISA, Immunocytochemistry, Immunofluorescence, and Western Blotting. Specific conditions for reactivity should be optimized by the end user. Expect a band at approximately 124 kDa in Western Blots of specific cell lysates and tissues.

Assay Dilutions: All assays should be optimized by the user. Recommended dilutions (if any) may be listed below.

ELISA: 1:5000 - 1:10000

IF: 20 µg/mL

WB: 0.5-1 µg/mL

Formulation

Physical State: Liquid (sterile filtered)

Concentration: 1 mg/mL by UV absorbance at 280 nm

Buffer: 0.01 M Sodium Phosphate, 0.25 M Sodium Chloride, pH 7.2

Preservative: 0.02% (w/v) Sodium Azide

Stabilizer: None

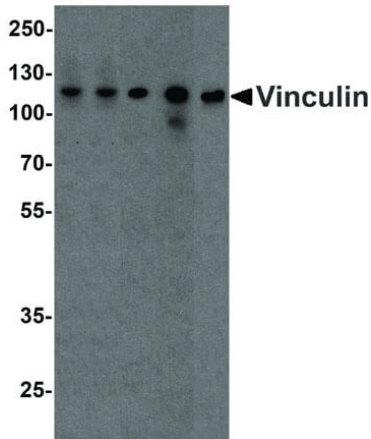
Shipping & Handling

Shipping Condition: Wet Ice

Storage Condition: Antibody can be stored at 4°C up to one year. Antibodies should not be exposed to prolonged high temperatures.

Expiration: Expiration date is one (1) year from date of receipt.

Images



Western Blot

Western Blot of Rabbit anti-VINCULIN antibody. Lane 1: A431 WCL. Lane 2: Daudi WCL. Lane 3: Jurkat WCL. Lane 4: Raji WCL. Lane 5: THP-1 whole cell lysate. Primary antibody: VINCULIN antibody at 1 $\mu\text{g}/\text{mL}$ overnight at 4 $^{\circ}\text{C}$. Secondary antibody: Goat anti-rabbit HRP secondary antibody. Block: 5% BLOTTO. Predicted/Observed size: 120 kDa, 117 kDa for VINCULIN.

Disclaimer

This product is for research use only and is not intended for therapeutic or diagnostic applications. Please contact a technical service representative for more information. All products of animal origin manufactured by Rockland Immunochemicals are derived from starting materials of North American origin. Collection was performed in United States Department of Agriculture (USDA) inspected facilities and all materials have been inspected and certified to be free of disease and suitable for exportation. All properties listed are typical characteristics and are not specifications. All suggestions and data are offered in good faith but without guarantee as conditions and methods of use of our products are beyond our control. All claims must be made within 30 days following the date of delivery. The prospective user must determine the suitability of our materials before adopting them on a commercial scale. Suggested uses of our products are not recommendations to use our products in violation of any patent or as a license under any patent of Rockland Immunochemicals, Inc. If you require a commercial license to use this material and do not have one, then return this material, unopened to: Rockland Inc., P.O. BOX 5199, Limerick, Pennsylvania, USA.