

**Datasheet for 600-401-FW3****VEZT Antibody****Overview**

<b>Description:</b>	Anti-VEZT (RABBIT) Antibody - 600-401-FW3
<b>Item No.:</b>	600-401-FW3
<b>Size:</b>	100 µg
<b>Applications:</b>	ELISA, IF, IHC, WB
<b>Reactivity:</b>	Human, Mouse, Rat
<b>Host Species:</b>	Rabbit

**Product Details**

<b>Background:</b>	Vezeatin (VEZT) is a transmembrane protein which localizes to adherens junctions and binds to myosin VIIA and the cadherin-catenins complex (1). Expression of this gene in gastric cancer tissues is decreased due to hypermethylation of the promoter. Expression of this gene may also be inhibited by binding of a specific microRNA to a target sequence in the 3' UTR of the transcripts (2). VEZT has also been shown to be required for morphogenesis of the preimplantation mouse embryo (3).
<b>Synonyms:</b>	VEZT Antibody, VEZATIN, Vezeatin
<b>Host Species:</b>	Rabbit
<b>Clonality:</b>	Polyclonal
<b>Format:</b>	IgG

**Target Details**

<b>Gene Name:</b>	VEZT
<b>Reactivity:</b>	Human, Mouse, Rat
<b>Immunogen Type:</b>	Conjugated Peptide
<b>Immunogen:</b>	Anti-VEZT antibody was prepared from whole rabbit serum produced by repeated immunizations with a 17 amino acid peptide near the internal region of human VEZT.

**Purity/Specificity:** Anti-VEZT antibody was affinity purified from monospecific antiserum by immunoaffinity chromatography. VEZT antibody is human, mouse and rat reactive. Multiple isoforms are known to exist.

**Relevant Links:**

- [UniProtKB - Q9HBM0](#)
- [GeneID - 55591](#)
- [NCBI - NP\\_060069.3](#)

## Application Details

**Tested Applications:** ELISA, IF, IHC, WB

**Application Note:** Anti-VEZT Antibody has been tested for use in ELISA, Western Blotting, Immunohistochemistry and Immunofluorescence. Specific conditions for reactivity should be optimized by the end user. Expect a band at approximately 89 kDa in Western Blots of specific cell lysates and tissues.

**Assay Dilutions:** All assays should be optimized by the user. Recommended dilutions (if any) may be listed below.

**ELISA:** 1:10,000 - 1:20,000

**IF:** 20 µg/mL

**IHC:** 5 µg/mL

**WB:** 1-2 µg/mL

## Formulation

**Physical State:** Liquid (sterile filtered)

**Concentration:** 1 mg/mL by UV absorbance at 280 nm

**Buffer:** 0.01 M Sodium Phosphate, 0.25 M Sodium Chloride, pH 7.2

**Preservative:** 0.02% (w/v) Sodium Azide

**Stabilizer:** None

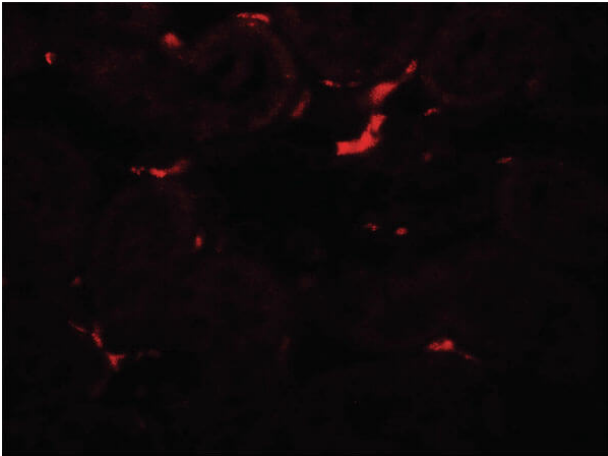
## Shipping & Handling

**Shipping Condition:** Dry Ice

**Storage Condition:** Store vial at -20° C prior to opening. Aliquot contents and freeze at -20° C or below for extended storage. Avoid cycles of freezing and thawing. Centrifuge product if not completely clear after standing at room temperature. This product is stable for several weeks at 4° C as an undiluted liquid. Dilute only prior to immediate use.

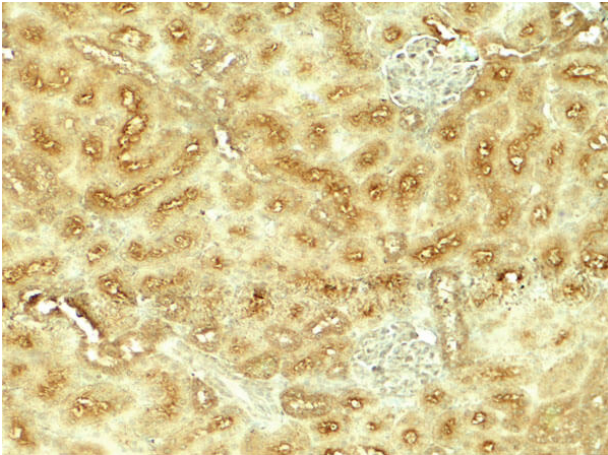
**Expiration:** Expiration date is one (1) year from date of receipt.

## Images



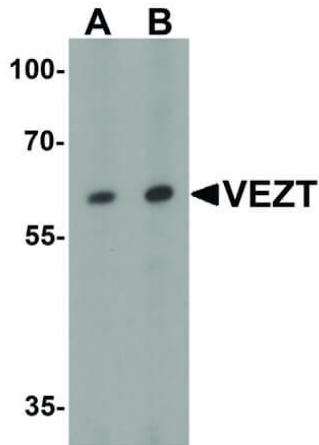
### **Immunofluorescence Microscopy**

Immunofluorescence Microscopy of Rabbit anti-VEZT antibody. Tissue: rat colon tissue. Primary antibody: VEZT antibody at 20  $\mu\text{g}/\text{mL}$ . Secondary antibody: Fluorescein rabbit secondary antibody at 1:20,000. Localization: VEZT is nuclear.



### **Immunohistochemistry**

Immunohistochemistry of Rabbit anti-VEZT antibody. Tissue: rat kidney. Primary antibody: VEZT antibody at 5  $\mu\text{g}/\text{mL}$ . Secondary antibody: Peroxidase rabbit secondary antibody at 1:5,000. Localization: VEZT is nuclear. Staining: VEZT as precipitated brown signal.

**Western Blot**

Western Blot of Rabbit anti-VEZT antibody. Lane A: 293 cell lysate at 1 µg/mL. Lane B: 293 cell lysate at 2 µg/mL. Primary antibody: VEZT antibody overnight at 4°C. Secondary antibody: Goat anti-Rabbit HRP secondary antibody. Block: 5% BLOTTO. Predicted/Observed size: 63, 68, 78, 81, 83, 86 kDa / 60 kDa for VEZT.

**Disclaimer**

This product is for research use only and is not intended for therapeutic or diagnostic applications. Please contact a technical service representative for more information. All products of animal origin manufactured by Rockland Immunochemicals are derived from starting materials of North American origin. Collection was performed in United States Department of Agriculture (USDA) inspected facilities and all materials have been inspected and certified to be free of disease and suitable for exportation. All properties listed are typical characteristics and are not specifications. All suggestions and data are offered in good faith but without guarantee as conditions and methods of use of our products are beyond our control. All claims must be made within 30 days following the date of delivery. The prospective user must determine the suitability of our materials before adopting them on a commercial scale. Suggested uses of our products are not recommendations to use our products in violation of any patent or as a license under any patent of Rockland Immunochemicals, Inc. If you require a commercial license to use this material and do not have one, then return this material, unopened to: Rockland Inc., P.O. BOX 5199, Limerick, Pennsylvania, USA.