

Datasheet for 600-401-FV3**UPK1B Antibody****Overview**

Description:	Anti-UPK1B (RABBIT) Antibody - 600-401-FV3
Item No.:	600-401-FV3
Size:	100 µg
Applications:	ELISA, IF, IHC, WB
Reactivity:	Human, Mouse, Rat
Host Species:	Rabbit

Product Details

Background:	Uroplakin-1B (UPK1B) is a member of the transmembrane 4 superfamily, also known as the tetraspanin family. Most of these members are cell-surface proteins that are characterized by the presence of four hydrophobic domains. The proteins mediate signal transduction events that play a role in the regulation of cell development, activation, growth and motility. UPK1B is found in the asymmetrical unit membrane (AUM) where it can form a complex with other transmembrane 4 superfamily proteins and may play a role in normal bladder epithelial physiology, possibly in regulating membrane permeability of superficial umbrella cells or in stabilizing the apical membrane through AUM/cytoskeletal interactions.
Synonyms:	UPK1B Antibody, UPIB, UPK1, TSPAN20, Uroplakin-1b, Tetraspanin-20, UP1b
Host Species:	Rabbit
Clonality:	Polyclonal
Format:	IgG

Target Details

Gene Name:	UPK1B
Reactivity:	Human, Mouse, Rat
Immunogen Type:	Conjugated Peptide
Immunogen:	Anti-UPK1B antibody was prepared from whole rabbit serum produced by repeated immunizations with a 17 amino acid synthetic peptide near the internal region of human UPK1B.

Purity/Specificity: Anti-UPK1B Antibody was affinity purified from monospecific antiserum by immunoaffinity chromatography. At least two isoforms of UPK1B are known to exist; this antibody will recognize both isoforms. UPK1B antibody is predicted to not cross-react with other tetraspanin protein family members.

Relevant Links:

- [UniProtKB - O75841](#)
- [GeneID - 7348](#)
- [NCBI - NP_008883.2](#)

Application Details

Tested Applications: ELISA, IF, IHC, WB

Application Note: Anti-UPK1B Antibody has been tested for use in ELISA, Western Blotting, Immunohistochemistry and Immunofluorescence. Specific conditions for reactivity should be optimized by the end user. Expect a band at approximately 30 kDa in Western Blots of specific cell lysates and tissues.

Assay Dilutions: All assays should be optimized by the user. Recommended dilutions (if any) may be listed below.

ELISA: 1:5000 - 1:10000

IF: 20 µg/mL

IHC: 5 µg/mL

WB: 0.5-1 µg/mL

Formulation

Physical State: Liquid (sterile filtered)

Concentration: 1 mg/mL by UV absorbance at 280 nm

Buffer: 0.01 M Sodium Phosphate, 0.25 M Sodium Chloride, pH 7.2

Preservative: 0.02% (w/v) Sodium Azide

Stabilizer: None

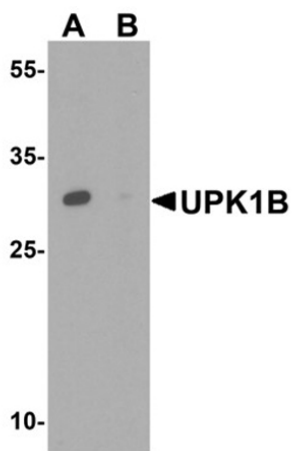
Shipping & Handling

Shipping Condition: Dry Ice

Storage Condition: Store vial at -20° C prior to opening. Aliquot contents and freeze at -20° C or below for extended storage. Avoid cycles of freezing and thawing. Centrifuge product if not completely clear after standing at room temperature. This product is stable for several weeks at 4° C as an undiluted liquid. Dilute only prior to immediate use.

Expiration: Expiration date is one (1) year from date of receipt.

Images

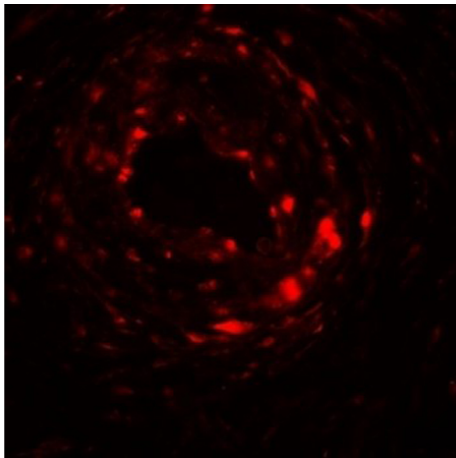


Western Blot

Western blot analysis of UPK1B.

Load: human kidney tissue lysate.

Primary Antibody: UPK1B antibody at 1 µg/mL in the (A) absence and (B) presence of blocking peptide.

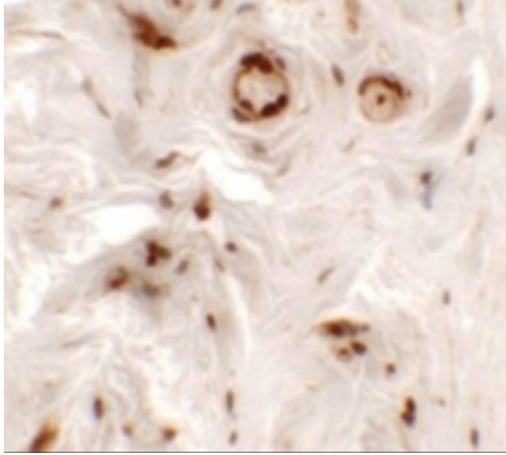


Immunofluorescence Microscopy

Immunofluorescence of UPK1B.

Tissue: human bladder muscle tissue.

Primary Antibody: UPK1B antibody at 20 µg/mL.

**Immunohistochemistry**

Immunohistochemistry of UPK1B.

Tissue: human bladder tissue.

Primary Antibody: UPK1B antibody at 5 µg/mL.

Disclaimer

This product is for research use only and is not intended for therapeutic or diagnostic applications. Please contact a technical service representative for more information. All products of animal origin manufactured by Rockland Immunochemicals are derived from starting materials of North American origin. Collection was performed in United States Department of Agriculture (USDA) inspected facilities and all materials have been inspected and certified to be free of disease and suitable for exportation. All properties listed are typical characteristics and are not specifications. All suggestions and data are offered in good faith but without guarantee as conditions and methods of use of our products are beyond our control. All claims must be made within 30 days following the date of delivery. The prospective user must determine the suitability of our materials before adopting them on a commercial scale. Suggested uses of our products are not recommendations to use our products in violation of any patent or as a license under any patent of Rockland Immunochemicals, Inc. If you require a commercial license to use this material and do not have one, then return this material, unopened to: Rockland Inc., P.O. BOX 5199, Limerick, Pennsylvania, USA.