

Datasheet for 600-401-FR9

Tslp Receptor Antibody

Overview

Description:	Anti-TSLP Receptor (RABBIT) Antibody - 600-401-FR9
Item No.:	600-401-FR9
Size:	100 µg
Applications:	ELISA, IF, WB
Reactivity:	Mouse
Host Species:	Rabbit

Product Details

Background:	Thymic stromal lymphopoietin (TSLP) has recently been identified as an important factor capable of driving dendritic cell maturation and activation. It is involved in the positive selection of regulatory T cells, maintenance of peripheral CD4+ T cell homeostasis and the induction of CD4+ T cell-mediated allergic reaction. TSLP is also capable of supporting the growth of fetal liver and adult B cell progenitors and their differentiation to the IgM-positive stage of B cell development. Its receptor TSLP-R will bind TSLP in a low-affinity fashion in transfected cells; co-transfection with IL-7R-alpha cDNA results in high-affinity binding and a functional heteromeric complex. This heteromeric receptor requires stat5 for TSLP-mediated signal transduction and is inhibited by SOCS-1. The approximately 75 kDa band seen in the immunoblot may be a post-translationally modified form of TSLP-R.
Synonyms:	TSLP Receptor Antibody, CRLM2, Ly114, Tpte2, Tslpr, Crlm2, Cytokine receptor-like factor 2, Cytokine receptor-like molecule 2, CRLM-2
Host Species:	Rabbit
Clonality:	Polyclonal
Format:	IgG

Target Details

Gene Name:	Crlf2
Reactivity:	Mouse
Immunogen Type:	Conjugated Peptide

Immunogen:	Anti-TSLP receptor antibody was prepared from whole rabbit serum produced by repeated immunizations with a 21 amino acid synthetic peptide from near the internal region of mouse TSLP receptor.
Purity/Specificity:	Anti-TSLP Receptor Antibody was affinity purified from monospecific antiserum by immunoaffinity chromatography. Cross reactivity with TSLP Receptor from other sources has not been determined.
Relevant Links:	<ul style="list-style-type: none">• UniProtKB - Q8CII9• GeneID - 10194• NCBI - NP_005777

Application Details

Tested Applications:	ELISA, IF, WB
Application Note:	Anti-TSLP Receptor Antibody has been tested for use in ELISA, Western Blotting and Immunofluorescence. Specific conditions for reactivity should be optimized by the end user. Expect a band at approximately 38 kDa in Western Blots of specific cell lysates and tissues.
Assay Dilutions:	All assays should be optimized by the user. Recommended dilutions (if any) may be listed below.
ELISA:	1:10,000
IF:	20 µg/mL
WB:	1 µg/mL

Formulation

Physical State:	Liquid (sterile filtered)
Concentration:	1 mg/mL by UV absorbance at 280 nm
Buffer:	0.01 M Sodium Phosphate, 0.25 M Sodium Chloride, pH 7.2
Preservative:	0.02% (w/v) Sodium Azide
Stabilizer:	None

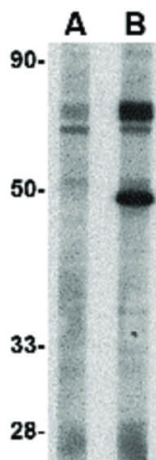
Shipping & Handling

Shipping Condition:	Dry Ice
----------------------------	---------

Storage Condition: Store vial at -20° C prior to opening. Aliquot contents and freeze at -20° C or below for extended storage. Avoid cycles of freezing and thawing. Centrifuge product if not completely clear after standing at room temperature. This product is stable for several weeks at 4° C as an undiluted liquid. Dilute only prior to immediate use.

Expiration: Expiration date is one (1) year from date of receipt.

Images



Western Blot

Western Blot of TSLP Receptor antibody. Lane A: Mouse heart tissue lysate in the presence of blocking peptide. Lane B: Mouse heart tissue lysate in the absence of blocking peptide. Load: 35 µg per lane. Secondary antibody: Peroxidase rabbit secondary antibody at 1:10,000 for 45 min at RT. Block: 5% BLOTTO overnight at 4°C. Predicted/Observed size: 117.9 kDa, ~50 kDa for TSLP Receptor antibody. Other band(s): TSLP Receptor antibody splice variants and isoforms.

Disclaimer

This product is for research use only and is not intended for therapeutic or diagnostic applications. Please contact a technical service representative for more information. All products of animal origin manufactured by Rockland Immunochemicals are derived from starting materials of North American origin. Collection was performed in United States Department of Agriculture (USDA) inspected facilities and all materials have been inspected and certified to be free of disease and suitable for exportation. All properties listed are typical characteristics and are not specifications. All suggestions and data are offered in good faith but without guarantee as conditions and methods of use of our products are beyond our control. All claims must be made within 30 days following the date of delivery. The prospective user must determine the suitability of our materials before adopting them on a commercial scale. Suggested uses of our products are not recommendations to use our products in violation of any patent or as a license under any patent of Rockland Immunochemicals, Inc. If you require a commercial license to use this material and do not have one, then return this material, unopened to: Rockland Inc., P.O. BOX 5199, Limerick, Pennsylvania, USA.