

Datasheet for 600-401-FR6**TSLP Antibody****Overview**

Description:	Anti-TSLP (RABBIT) Antibody - 600-401-FR6
Item No.:	600-401-FR6
Size:	100 µg
Applications:	ELISA, IHC, WB
Reactivity:	Human
Host Species:	Rabbit

Product Details

Background: Thymic stromal lymphopoietin (TSLP) has recently been identified as an important factor capable of driving dendritic cell maturation and activation. TSLP is a four-helix-bundle cytokine that is expressed mainly by barrier epithelial cells and is a potent activator of several cell types such as myeloid dendritic cells. TSLP is involved in the positive selection of regulatory T cells, maintenance of peripheral CD4+ T cell homeostasis and the induction of CD4+ T cell-mediated allergic reaction. TSLP is also capable of supporting the growth of fetal liver and adult B cell progenitors and their differentiation to the IgM-positive stage of B cell development. Amino acid sequence analysis has shown poor homology between human and mouse TSLP although they exhibit similar biological functions and are expressed in similar tissues. At least two differentially spliced isoforms of TSLP are known to exist.

Synonyms:	TSLP Antibody, Thymic stromal lymphopoietin
Host Species:	Rabbit
Clonality:	Polyclonal
Format:	IgG

Target Details

Gene Name:	TSLP
Reactivity:	Human
Immunogen Type:	Conjugated Peptide

Immunogen:	Anti-TSLP antibody was prepared from whole rabbit serum produced by repeated immunizations with a 17 amino acid synthetic peptide from near the C-terminus of human TSLP.
Purity/Specificity:	Anti-TSLP Antibody was affinity purified from monospecific antiserum by immunoaffinity chromatography. Cross reactivity with TSLP from other sources has not been determined.
Relevant Links:	<ul style="list-style-type: none">• UniProtKB - Q969D9• GeneID - 85480• NCBI - NP_149024.1

Application Details

Tested Applications:	ELISA, IHC, WB
Application Note:	Anti-TSLP Antibody has been tested for use in ELISA, Western Blotting, and Immunohistochemistry. Specific conditions for reactivity should be optimized by the end user. Expect a band at approximately 18 kDa in Western Blots of specific cell lysates and tissues.
Assay Dilutions:	All assays should be optimized by the user. Recommended dilutions (if any) may be listed below.
ELISA:	1:10,000 - 1:20,000
IHC:	2.5 µg/mL
WB:	1-2 µg/mL

Formulation

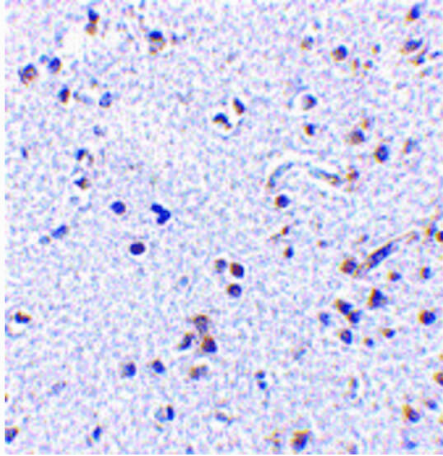
Physical State:	Liquid (sterile filtered)
Concentration:	1.0 mg/mL by UV absorbance at 280 nm
Buffer:	0.01 M Sodium Phosphate, 0.25 M Sodium Chloride, pH 7.2
Preservative:	0.02% (w/v) Sodium Azide
Stabilizer:	None

Shipping & Handling

Shipping Condition:	Dry Ice
Storage Condition:	Store vial at -20° C prior to opening. Aliquot contents and freeze at -20° C or below for extended storage. Avoid cycles of freezing and thawing. Centrifuge product if not completely clear after standing at room temperature. This product is stable for several weeks at 4° C as an undiluted liquid. Dilute only prior to immediate use.

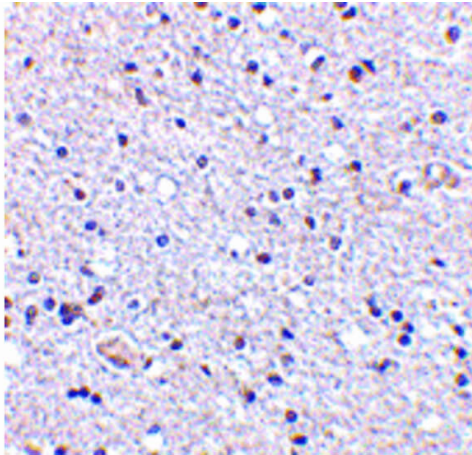
Expiration: Expiration date is one (1) year from date of receipt.

Images



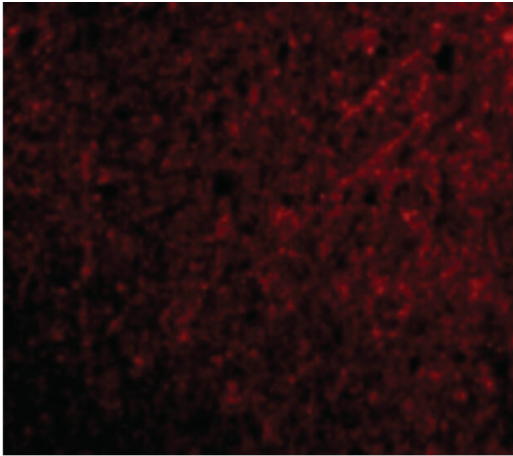
Immunohistochemistry

Immunohistochemistry of TSLP antibody. Tissue: human brain tissue. Fixation: formalin fixed paraffin embedded. Antigen retrieval: not required. Primary antibody: TSLP antibody at 2.5 µg/mL for 1 h at RT. Secondary antibody: Peroxidase rabbit secondary antibody at 1:10,000 for 45 min at RT. Localization: TSLP is nuclear and cytoplasmic. Staining: TSLP as precipitated red signal with hematoxylin purple nuclear counterstain.



Immunohistochemistry

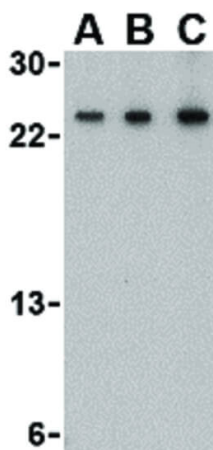
Immunohistochemistry of TSLP antibody. Tissue: Human Brain tissue. Fixation: formalin fixed paraffin embedded. Antigen retrieval: not required. Primary antibody: TSLP antibody at 2.5 µg/mL for 1 h at RT. Secondary antibody: Peroxidase rabbit secondary antibody at 1:10,000 for 45 min at RT. Localization: TSLP is nuclear and cytoplasmic. Staining: TSLP as precipitated red signal with hematoxylin purple nuclear counterstain.

**Immunofluorescence Microscopy**

Immunofluorescence Microscopy of TSLP antibody. Tissue: Human Brain cells. Fixation: 0.5% PFA. Antigen retrieval: not required. Primary antibody: TSLP antibody at 20 µg/mL for 1 h at RT. Secondary antibody: Fluorescein rabbit secondary antibody at 1:10,000 for 45 min at RT. Staining: TSLP as red fluorescent signal.

**Western Blot**

Western Blot of TSLP antibody. Lane A: Jurkat cell lysate at 1 µg/mL. Lane B: Jurkat cell lysate at 2 µg/mL. Load: 35 µg per lane. Secondary antibody: Peroxidase rabbit secondary antibody at 1:10,000 for 45 min at RT. Block: 5% BLOTTO overnight at 4°C. Predicted/Observed size: 18 kDa, ~27 kDa for TSLP.

**Western Blot**

Western Blot of TSLP antibody. Lane A: A-20 cell lysate at 0.5 µg/mL. Lane B: A-20 cell lysate at 1 µg/mL. Lane C: A-20 cell lysate at 2 µg/mL. Load: 35 µg per lane. Secondary antibody: Peroxidase rabbit secondary antibody at 1:10,000 for 45 min at RT. Block: 5% BLOTTO overnight at 4°C. Predicted/Observed size: 18kDa, 24 kDa for TSLP.

Disclaimer

This product is for research use only and is not intended for therapeutic or diagnostic applications. Please contact a technical service representative for more information. All products of animal origin manufactured by Rockland Immunochemicals are derived from starting materials of North American origin. Collection was performed in United States Department of Agriculture (USDA) inspected facilities and all materials have been inspected and certified to be free of disease and suitable for exportation. All properties listed are typical characteristics and are not specifications. All suggestions and data are offered in good faith but without guarantee as conditions and methods of use of our products are beyond our control. All claims must be made within 30 days following the date of delivery. The prospective user must determine the suitability of our materials before adopting them on a commercial scale. Suggested uses of our products are not recommendations to use our products in violation of any patent or as a license under any patent of Rockland Immunochemicals, Inc. If you require a commercial license to use this material and do not have one, then return this material, unopened to: Rockland Inc., P.O. BOX 5199, Limerick, Pennsylvania, USA.