

Datasheet for 600-401-FR1**TSC2 Antibody****Overview**

Description:	Anti-TSC2 (RABBIT) Antibody - 600-401-FR1
Item No.:	600-401-FR1
Size:	100 µg
Applications:	ELISA, IF, IHC, WB
Reactivity:	Human, Mouse
Host Species:	Rabbit

Product Details

Background:	Tuberous sclerosis complex (TSC) is an autosomal dominant tumor syndrome caused by mutations in either of the TSC1 or TSC2 tumor suppressor genes. The products of these genes form a protein complex that indirectly decreases the signaling of the mammalian Target of Rapamycin (TOR), an evolutionarily conserved serine/threonine kinase that regulates cell growth and cell cycle through its ability to integrate signals from nutrient levels and growth factors. TOR activity is stimulated by Rheb, a member of the Ras superfamily of G-proteins, when the GTP/GDP ratio bound to Rheb is high. Immunoprecipitated TSC1/TSC2 has been shown to stimulate Rheb GTPase activity in vitro, suggesting that the TSC1/TSC2 complex decreases the ability of Rheb to stimulate TOR activity. This is supported by experiments showing that overexpression of TSC1 and TSC2 results in a significant decrease in the GTP/GDP ratio bound to Rheb and the inhibition of cell growth. At least three isoforms of TSC2 exist.
Synonyms:	TSC2 Antibody, LAM, TSC4, Tuberin, Tuberous sclerosis 2 protein
Host Species:	Rabbit
Clonality:	Polyclonal
Format:	IgG

Target Details

Gene Name:	TSC2
Reactivity:	Human, Mouse
Immunogen Type:	Conjugated Peptide

Immunogen:	Anti-TSC2 (NT) was prepared from whole rabbit serum produced by repeated immunizations with a 14 amino acid synthetic peptide from near the N-terminus of human TSC2.
Purity/Specificity:	Anti-TSC2 Antibody was affinity purified from monospecific antiserum by immunoaffinity chromatography. Cross reactivity with TSC2 from other sources has not been determined.
Relevant Links:	<ul style="list-style-type: none">• UniProtKB - P49815• GeneID - 7249• NCBI - NP_000539.2

Application Details

Tested Applications:	ELISA, IF, IHC, WB
Application Note:	Anti-TSC2 Antibody has been tested for use in ELISA, Western Blotting, Immunocytochemistry and Immunofluorescence. Specific conditions for reactivity should be optimized by the end user. Expect a band at approximately 201 kDa in Western Blots of specific cell lysates and tissues.
Assay Dilutions:	All assays should be optimized by the user. Recommended dilutions (if any) may be listed below.
ELISA:	1:20,000 - 1:40,000
IF:	20 µg/mL
IHC:	10 µg/mL
WB:	2-4 µg/mL

Formulation

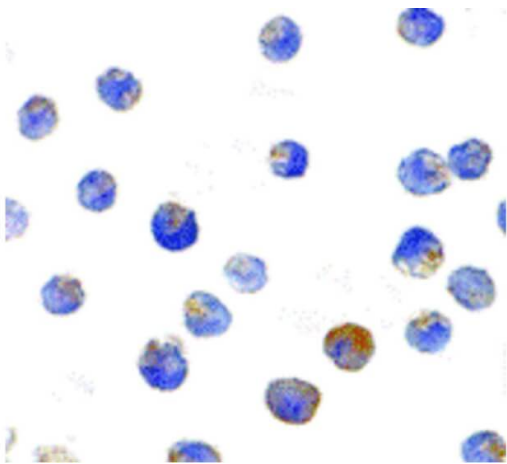
Physical State:	Liquid (sterile filtered)
Concentration:	1.0 mg/mL by UV absorbance at 280 nm
Buffer:	0.01 M Sodium Phosphate, 0.25 M Sodium Chloride, pH 7.2
Preservative:	0.02% (w/v) Sodium Azide
Stabilizer:	None

Shipping & Handling

Shipping Condition:	Dry Ice
----------------------------	---------

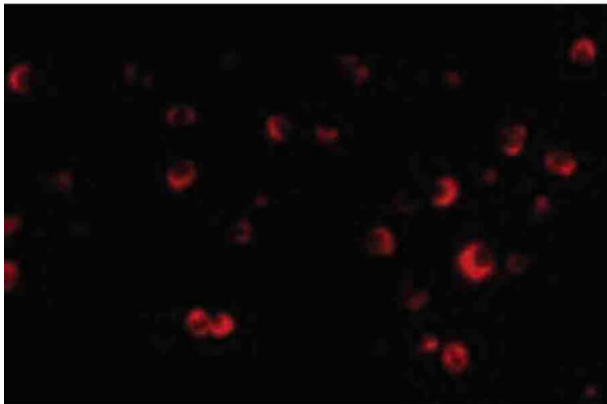
Storage Condition:	Store vial at -20° C prior to opening. Aliquot contents and freeze at -20° C or below for extended storage. Avoid cycles of freezing and thawing. Centrifuge product if not completely clear after standing at room temperature. This product is stable for several weeks at 4° C as an undiluted liquid. Dilute only prior to immediate use.
Expiration:	Expiration date is one (1) year from date of receipt.

Images



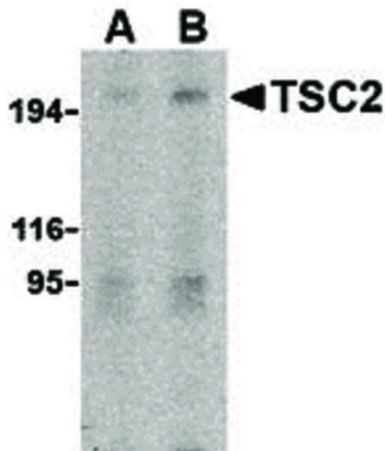
Immunohistochemistry

Immunocytochemistry of TSC2 antibody. Cell Type: L1210 cells. Fixation: formalin fixed paraffin embedded. Antigen retrieval: not required. Primary antibody: TSC2 antibody at 10 µg/mL for 1 h at RT. Secondary antibody: Peroxidase rabbit secondary antibody at 1:10,000 for 45 min at RT. Localization: TSC2 is located in the cell membrane. Staining: TSC2 is stained brown with hematoxylin purple counterstain.



Immunofluorescence Microscopy

Immunofluorescence Microscopy of TSC2 antibody. Cell Type: L1210 cells. Fixation: 0.5% PFA. Antigen retrieval: not required. Primary antibody: TSC2 antibody at 20 µg/mL for 1 h at RT. Secondary antibody: Fluorescein rabbit secondary antibody at 1:10,000 for 45 min at RT. Localization: TSC2 is located in the cell membrane Staining: TSC2 as red fluorescent signal.

**Western Blot**

Western Blot of TSC2 antibody in L1210 cell lysate. Lane A: TSC2 antibody at 2 $\mu\text{g}/\text{mL}$. Lane B: TSC2 antibody at 4 $\mu\text{g}/\text{mL}$. Load: 35 μg per lane. Primary antibody: TSC2 antibody at designated concentrations for overnight at 4°C. Secondary antibody: Peroxidase rabbit secondary antibody at 1:10,000 for 45 min at RT. Block: 5% BLOTTO overnight at 4°C. Predicted/Observed size: 106 kDa, 196 kDa for TSC2. Other band(s): TSC2 splice variants and isoforms.

Disclaimer

This product is for research use only and is not intended for therapeutic or diagnostic applications. Please contact a technical service representative for more information. All products of animal origin manufactured by Rockland Immunochemicals are derived from starting materials of North American origin. Collection was performed in United States Department of Agriculture (USDA) inspected facilities and all materials have been inspected and certified to be free of disease and suitable for exportation. All properties listed are typical characteristics and are not specifications. All suggestions and data are offered in good faith but without guarantee as conditions and methods of use of our products are beyond our control. All claims must be made within 30 days following the date of delivery. The prospective user must determine the suitability of our materials before adopting them on a commercial scale. Suggested uses of our products are not recommendations to use our products in violation of any patent or as a license under any patent of Rockland Immunochemicals, Inc. If you require a commercial license to use this material and do not have one, then return this material, unopened to: Rockland Inc., P.O. BOX 5199, Limerick, Pennsylvania, USA.