

Datasheet for 600-401-FQ5**TRPC6 Antibody****Overview**

Description:	Anti-TRPC6 (RABBIT) Antibody - 600-401-FQ5
Item No.:	600-401-FQ5
Size:	100 µg
Applications:	ELISA, IF, IHC, WB
Reactivity:	Human, Mouse, Rat
Host Species:	Rabbit

Product Details

Background:	The mammalian transient receptor potential (TRP) superfamily can be divided into three major families including the "canonical TRP" (TRPC) family. The seven members of this family share the activation through PLC-coupled receptors and have been suggested to be components of receptor-regulated cation channels in different cell types. Furthermore, the members of the TRPC6/6/7 subfamily can be activated by diacylglycerol (DAG) analogs, suggesting a possible mechanism of activation of these channels by PLC-coupled receptors. When expressed in transfected cells, TRPC6 acts as a non-selective store-independent receptor-activated cation channel. It is activated by DAG in a PKC-independent manner and is insensitive to IP3 activation. There is increasing evidence that TRPC6 encodes endogenous DAG-activated receptor-operated cation channels in vivo.
Synonyms:	TRPC6 Antibody, TRP6, FSGS2, TRP6, Short transient receptor potential channel 6, Transient receptor protein 6, TrpC6
Host Species:	Rabbit
Clonality:	Polyclonal
Format:	IgG

Target Details

Gene Name:	TRPC6
Reactivity:	Human, Mouse, Rat
Immunogen Type:	Conjugated Peptide

Immunogen:	Anti-TRPC6 antibody was prepared from whole rabbit serum produced by repeated immunizations with a 14 amino acid synthetic peptide from near the C-terminus of human TRPC6.
Purity/Specificity:	Anti-TRPC6 Antibody was affinity purified from monospecific antiserum by immunoaffinity chromatography. Cross reactivity with TRPC6 from other sources has not been determined.
Relevant Links:	<ul style="list-style-type: none">• UniProtKB - Q9Y210• GeneID - 7225• NCBI - NP_004612.2

Application Details

Tested Applications:	ELISA, IF, IHC, WB
Application Note:	Anti-TRPC6 Antibody has been tested for use in ELISA, Western Blotting, Immunohistochemistry and Immunofluorescence. Specific conditions for reactivity should be optimized by the end user. Expect a band at approximately 106 kDa in Western Blots of specific cell lysates and tissues.
Assay Dilutions:	All assays should be optimized by the user. Recommended dilutions (if any) may be listed below.
ELISA:	1:5000-1:20,000
IF:	20 µg/mL
IHC:	10 µg/mL
WB:	0.5-2 µg/mL

Formulation

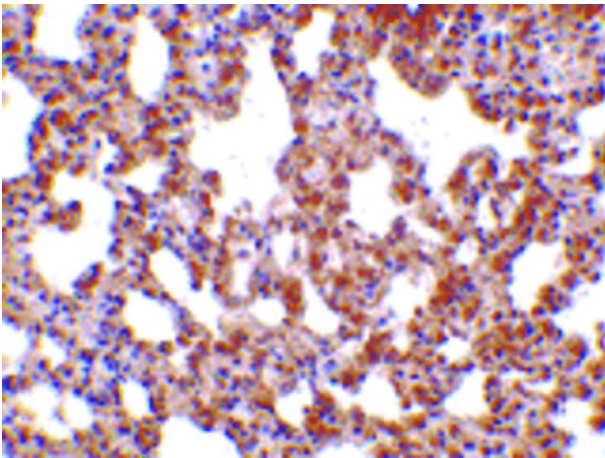
Physical State:	Liquid (sterile filtered)
Concentration:	1.0 mg/mL by UV absorbance at 280 nm
Buffer:	0.01 M Sodium Phosphate, 0.25 M Sodium Chloride, pH 7.2
Preservative:	0.02% (w/v) Sodium Azide
Stabilizer:	None

Shipping & Handling

Shipping Condition:	Dry Ice
----------------------------	---------

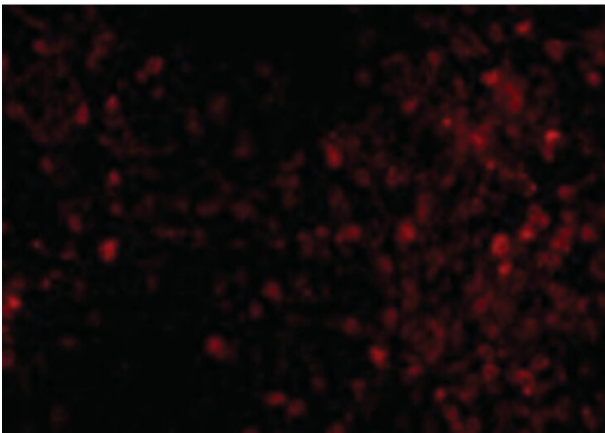
Storage Condition:	Store vial at -20° C prior to opening. Aliquot contents and freeze at -20° C or below for extended storage. Avoid cycles of freezing and thawing. Centrifuge product if not completely clear after standing at room temperature. This product is stable for several weeks at 4° C as an undiluted liquid. Dilute only prior to immediate use.
Expiration:	Expiration date is one (1) year from date of receipt.

Images



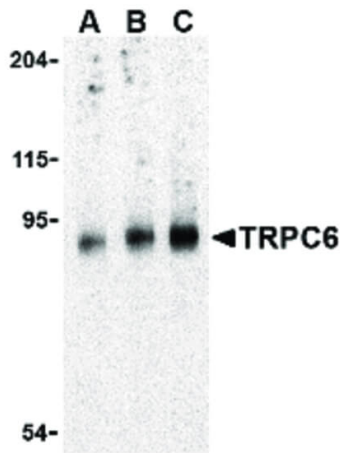
Immunohistochemistry

Immunohistochemistry of TRPC6 antibody. Tissue: mouse lung tissue. Fixation: formalin fixed paraffin embedded. Antigen retrieval: not required. Primary antibody: TRPC6 antibody at 10 µg/mL for 1 h at RT. Secondary antibody: Peroxidase rabbit secondary antibody at 1:10,000 for 45 min at RT. Localization: TRPC6 is cytoplasmic. Staining: TRPC6 is stained with hematoxylin purple nuclear counterstain.



Immunofluorescence Microscopy

Immunofluorescence Microscopy of TRPC6 antibody. Cell Type: mouse lung cells. Fixation: 0.5% PFA. Antigen retrieval: not required. Primary antibody: TRPC6 antibody at 20 µg/mL for 1 h at RT. Secondary antibody: Fluorescein rabbit secondary antibody at 1:10,000 for 45 min at RT. Localization: TRPC6 is cytoplasmic. Staining: TRPC6 as red fluorescent signal.

**Western Blot**

Western Blot of TRPC6 antibody in mouse lung tissue lysate.

Lane A: TRPC6 antibody at 0.5 $\mu\text{g}/\text{mL}$. Lane B: TRPC6 antibody at 1 $\mu\text{g}/\text{mL}$. Lane C: TRPC6 antibody at 2 $\mu\text{g}/\text{mL}$. Load: 35 μg per lane. Primary antibody: TRPC6 antibody at designated concentrations for overnight at 4°C. Secondary antibody: Peroxidase rabbit secondary antibody at 1:10,000 for 45 min at RT. Block: 5% BLOTTO overnight at 4°C. Predicted/Observed size: 56 kDa, 93 kDa for TRPC6. Other band(s): TRPC6 splice variants and isoforms.

References

- Chaudhuri P et al. Integration of TRPC6 and NADPH oxidase activation in lysophosphatidylcholine-induced TRPC5 externalization. *Am J Physiol Cell Physiol.* (2017)

Disclaimer

This product is for research use only and is not intended for therapeutic or diagnostic applications. Please contact a technical service representative for more information. All products of animal origin manufactured by Rockland Immunochemicals are derived from starting materials of North American origin. Collection was performed in United States Department of Agriculture (USDA) inspected facilities and all materials have been inspected and certified to be free of disease and suitable for exportation. All properties listed are typical characteristics and are not specifications. All suggestions and data are offered in good faith but without guarantee as conditions and methods of use of our products are beyond our control. All claims must be made within 30 days following the date of delivery. The prospective user must determine the suitability of our materials before adopting them on a commercial scale. Suggested uses of our products are not recommendations to use our products in violation of any patent or as a license under any patent of Rockland Immunochemicals, Inc. If you require a commercial license to use this material and do not have one, then return this material, unopened to: Rockland Inc., P.O. BOX 5199, Limerick, Pennsylvania, USA.