

**Datasheet for 600-401-FQ2****TRIP6 Antibody****Overview**

<b>Description:</b>	Anti-TRIP6 (RABBIT) Antibody - 600-401-FQ2
<b>Item No.:</b>	600-401-FQ2
<b>Size:</b>	100 µg
<b>Applications:</b>	ELISA, IF, IHC, WB
<b>Reactivity:</b>	Human, Mouse
<b>Host Species:</b>	Rabbit

**Product Details**

<b>Background:</b>	TRIP6 (Thyroid receptor interacting protein 6) is a zyxin-related focal adhesion molecule involved in cell motility and antiapoptotic responses. TRIP6 is predominantly expressed in kidney, liver and lung. It has three LIM domains, a PDZ-binding motif, a Crk SH2-binding motif and/or other protein interacting domains. TRIP6 regulates NF-κB activation and interacts with RICK and TRAF2, proteins that are involved in TNF signaling. TRIP6 antagonizes Fas-induced apoptosis and promotes Fas-mediated cell migration in apoptosis-resistant glioma cells via Src-dependent phosphorylation of TRIP6 at Tyr-55.
<b>Synonyms:</b>	TRIP6 Antibody, OIP1, OIP-1, ZRP-1, TRIP-6, TRIP6i2, OIP1, Thyroid receptor-interacting protein 6, Opa-interacting protein 1, TR-interacting protein 6
<b>Host Species:</b>	Rabbit
<b>Clonality:</b>	Polyclonal
<b>Format:</b>	IgG

**Target Details**

<b>Gene Name:</b>	TRIP6
<b>Reactivity:</b>	Human, Mouse
<b>Immunogen Type:</b>	Conjugated Peptide
<b>Immunogen:</b>	Anti-TRIP6 antibody was prepared from whole rabbit serum produced by repeated immunizations with a 15 amino acid synthetic peptide near the internal region of human TRIP6.

**Purity/Specificity:** Anti-TRIP6 Antibody was affinity purified from monospecific antiserum by immunoaffinity chromatography. Cross reactivity with TRIP6 from other sources has not been determined.

**Relevant Links:**

- [UniProtKB - Q15654](#)
- [GeneID - 7205](#)
- [NCBI - NP\\_003293.2](#)

## Application Details

**Tested Applications:** ELISA, IF, IHC, WB

**Application Note:** Anti-TRIP6 Antibody has been tested for use in ELISA, Western Blotting, Immunocytochemistry and Immunofluorescence. Specific conditions for reactivity should be optimized by the end user. Expect a band at approximately 50 kDa in Western Blots of specific cell lysates and tissues.

**Assay Dilutions:** All assays should be optimized by the user. Recommended dilutions (if any) may be listed below.

**ELISA:** 1:10,000

**IF:** 20 µg/mL

**WB:** 1 µg/mL

## Formulation

**Physical State:** Liquid (sterile filtered)

**Concentration:** 1 mg/mL by UV absorbance at 280 nm

**Buffer:** 0.01 M Sodium Phosphate, 0.25 M Sodium Chloride, pH 7.2

**Preservative:** 0.02% (w/v) Sodium Azide

**Stabilizer:** None

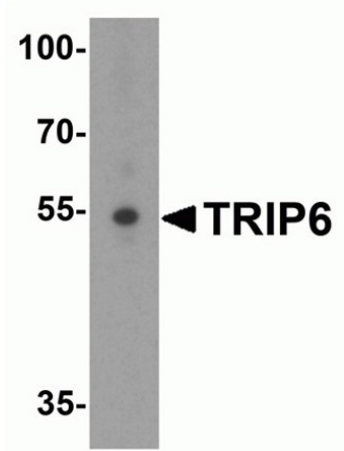
## Shipping & Handling

**Shipping Condition:** Dry Ice

**Storage Condition:** Store vial at -20° C prior to opening. Aliquot contents and freeze at -20° C or below for extended storage. Avoid cycles of freezing and thawing. Centrifuge product if not completely clear after standing at room temperature. This product is stable for several weeks at 4° C as an undiluted liquid. Dilute only prior to immediate use.

**Expiration:** Expiration date is one (1) year from date of receipt.

## Images

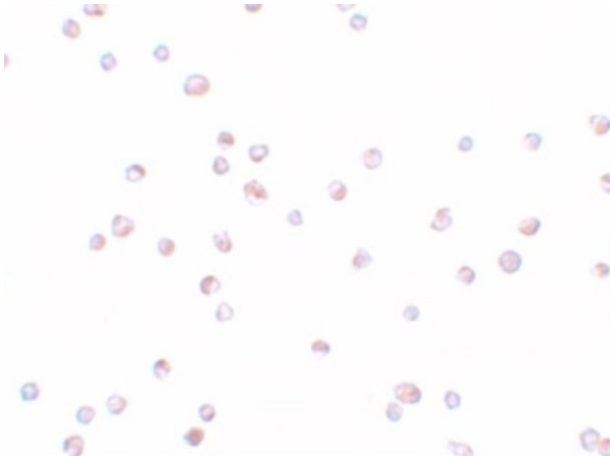


### Western Blot

Western blot analysis of TRIP6.

Load: A431 cell lysate.

Primary Antibody: Anti-TRIP6 antibody at 1  $\mu\text{g}/\text{mL}$ .

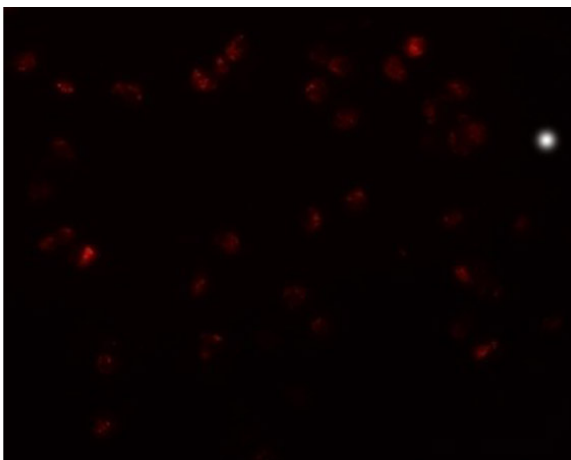


### Immunocytochemistry

Immunocytochemistry of TRIP6.

Cell: HeLa cells.

Primary Antibody: Anti-TRIP6 antibody at 10  $\mu\text{g}/\text{mL}$ .



### Immunofluorescence Microscopy

Immunofluorescence of TRIP6.

Cell: HeLa cells.

Primary Antibody: Anti-TRIP6 antibody at 20  $\mu\text{g}/\text{mL}$ .

## Disclaimer

This product is for research use only and is not intended for therapeutic or diagnostic applications. Please contact a technical service representative for more information. All products of animal origin manufactured by Rockland Immunochemicals are derived from starting materials of North American origin. Collection was performed in United States Department of Agriculture (USDA) inspected facilities and all materials have been inspected and certified to be free of disease and suitable for exportation. All properties listed are typical characteristics and are not specifications. All suggestions and data are offered in good faith but without guarantee as conditions and methods of use of our products are beyond our control. All claims must be made within 30 days following the date of delivery. The prospective user must determine the suitability of our materials before adopting them on a commercial scale. Suggested uses of our products are not recommendations to use our products in violation of any patent or as a license under any patent of Rockland Immunochemicals, Inc. If you require a commercial license to use this material and do not have one, then return this material, unopened to: Rockland Inc., P.O. BOX 5199, Limerick, Pennsylvania, USA.