

Datasheet for 600-401-FP9**TRIM5 gamma Antibody****Overview**

Description:	Anti-TRIM5 gamma (RABBIT) Antibody - 600-401-FP9
Item No.:	600-401-FP9
Size:	100 µg
Applications:	ELISA, IF, IHC, WB
Reactivity:	Human
Host Species:	Rabbit

Product Details

Background:	TRIM5 is a member of a broad family of otherwise unrelated proteins defined by the presence of a tripartite motif containing a RING domain, a B-box type 1, and a B-box type 2, followed by a coiled-coil region. TRIM5 has five alternately spliced isoforms, the longest of which is the alpha variant which also contains a carboxy-terminal B30.2 (SPRY) domain. While a function has not yet been assigned to TRIM5 gamma, it is known that expression of TRIM5a variants from humans, rhesus monkeys, and African green monkeys enable resistance to infection by various retroviruses including HIV-1, albeit at differing efficiencies. Furthermore, the TRIM5d isoform appears to serve as a scaffold for the assembly of endogenous BTBD1 and BTBD2 proteins and also exhibits autoubiquitination activity in a RING finger- and UbcH5B-dependent manner.
Synonyms:	TRIM5 gamma Antibody, RNF88, TRIM5alpha, RNF88, Tripartite motif-containing protein 5, RING finger protein 88
Host Species:	Rabbit
Clonality:	Polyclonal
Format:	IgG

Target Details

Gene Name:	TRIM5
Reactivity:	Human
Immunogen Type:	Conjugated Peptide

Immunogen:	Anti-TRIM5 gamma antibody was prepared from whole rabbit serum produced by repeated immunizations with a synthetic peptide corresponding to 15 amino acids near the C-terminus of human TRIM5 gamma.
Purity/Specificity:	Anti-TRIM5 gamma Antibody was affinity purified from monospecific antiserum by immunoaffinity chromatography. Cross reactivity with TRIM5 gamma from other sources has not been determined.
Relevant Links:	<ul style="list-style-type: none">• UniProtKB - Q9C035• GeneID - 85363• NCBI - NP_149023.2

Application Details

Tested Applications:	ELISA, IF, IHC, WB
Application Note:	Anti-TRIM5 gamma Antibody has been tested for use in ELISA, Western Blotting, Immunohistochemistry and Immunofluorescence. Specific conditions for reactivity should be optimized by the end user. Expect a band at approximately 56 kDa in Western Blots of specific cell lysates and tissues.
Assay Dilutions:	All assays should be optimized by the user. Recommended dilutions (if any) may be listed below.
ELISA:	1:20,000
IF:	20 µg/mL
IHC:	2 µg/mL
WB:	2 µg/mL

Formulation

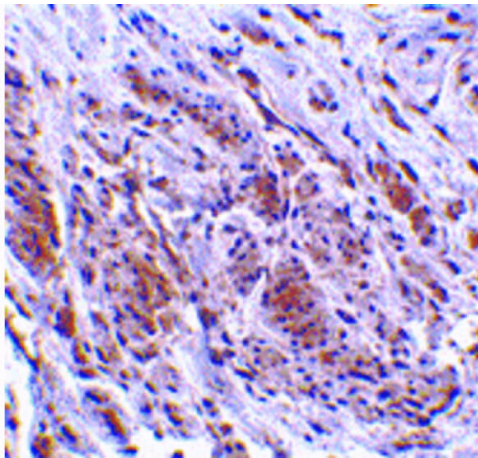
Physical State:	Liquid (sterile filtered)
Concentration:	1 mg/mL by UV absorbance at 280 nm
Buffer:	0.01 M Sodium Phosphate, 0.25 M Sodium Chloride, pH 7.2
Preservative:	0.02% (w/v) Sodium Azide
Stabilizer:	None

Shipping & Handling

Shipping Condition:	Dry Ice
----------------------------	---------

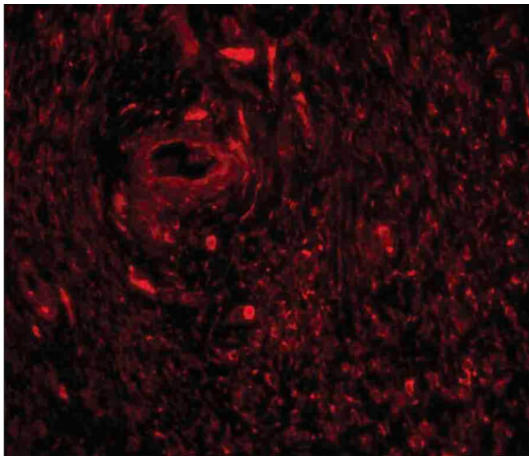
Storage Condition:	Store vial at -20° C prior to opening. Aliquot contents and freeze at -20° C or below for extended storage. Avoid cycles of freezing and thawing. Centrifuge product if not completely clear after standing at room temperature. This product is stable for several weeks at 4° C as an undiluted liquid. Dilute only prior to immediate use.
Expiration:	Expiration date is one (1) year from date of receipt.

Images



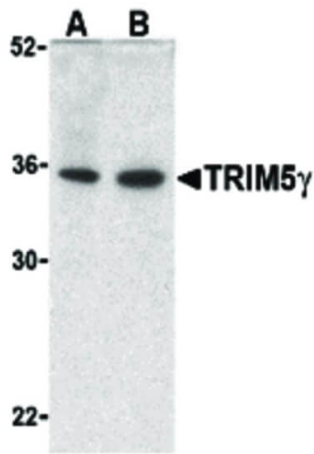
Immunohistochemistry

Immunohistochemistry of TRIM5 gamma antibody. Tissue: human bladder tissue. Fixation: formalin fixed paraffin embedded. Antigen retrieval: not required. Primary antibody: TRIM5 gamma antibody at 2 µg/mL for 1 h at RT. Secondary antibody: Peroxidase rabbit secondary antibody at 1:10,000 for 45 min at RT. Localization: TRIM5 gamma is nuclear and cytoplasmic. Staining: TRIM5 gamma is stained with hematoxylin purple nuclear counterstain.



Immunofluorescence Microscopy

Immunofluorescence Microscopy of TRIM5 gamma antibody. Tissue: human bladder tissue. Fixation: 0.5% PFA. Antigen retrieval: not required. Primary antibody: TRIM5 gamma antibody at 20 µg/mL for 1 h at RT. Secondary antibody: Fluorescein rabbit secondary antibody at 1:10,000 for 45 min at RT. Localization: TRIM5 gamma is nuclear and cytoplasmic. Staining: TRIM5 gamma as red fluorescent signal.

**Western Blot**

Western Blot of TRIM5 gamma antibody. Lane A: human bladder cell lysate. Lane B: human colon cell lysate. Load: 35 µg per lane. Primary antibody: TRIM5 gamma antibody at 2 µg /ml for overnight at 4°C. Secondary antibody: Peroxidase rabbit secondary antibody at 1:10,000 for 45 min at RT. Block: 5% BLOTTO overnight at 4°C. Predicted/Observed size: 57 kDa, 34 kDa for TRIM5 gamma. Other band(s): TRIM5 gamma splice variants and isoforms.

Disclaimer

This product is for research use only and is not intended for therapeutic or diagnostic applications. Please contact a technical service representative for more information. All products of animal origin manufactured by Rockland Immunochemicals are derived from starting materials of North American origin. Collection was performed in United States Department of Agriculture (USDA) inspected facilities and all materials have been inspected and certified to be free of disease and suitable for exportation. All properties listed are typical characteristics and are not specifications. All suggestions and data are offered in good faith but without guarantee as conditions and methods of use of our products are beyond our control. All claims must be made within 30 days following the date of delivery. The prospective user must determine the suitability of our materials before adopting them on a commercial scale. Suggested uses of our products are not recommendations to use our products in violation of any patent or as a license under any patent of Rockland Immunochemicals, Inc. If you require a commercial license to use this material and do not have one, then return this material, unopened to: Rockland Inc., P.O. BOX 5199, Limerick, Pennsylvania, USA.