

Datasheet for 600-401-FP5**TRIM33 Antibody****Overview**

Description:	Anti-TRIM33 (RABBIT) Antibody - 600-401-FP5
Item No.:	600-401-FP5
Size:	100 µg
Applications:	ELISA, IF, IHC, WB
Reactivity:	Human, Mouse, Rat
Host Species:	Rabbit

Product Details

Background:	TRIM24 (TIF1alpha), TRIM28 (TIF1beta), and TRIM33 (TIF1gamma) are three related cofactors belonging to the tripartite motif superfamily that interact with distinct transcription factors (1-2). The structure of TRIM33 is similar to TRIM24 and TRIM28, exhibiting multiple domains (RING finger, coiled coil, B boxes, PHD/TTC, and bromodomain) (3). TRIM33 functions in cell differentiation and development, playing a role in differentiation of hematopoietic cells (3). It interacts with the Smad2/3 transcription factor in hematopoietic, mesenchymal, and epithelial cell types to mediate different transcriptional effects in response to TGF-beta (4). It acts as an E3 ubiquitin-protein ligase and promotes SMAD4 ubiquitination (5).
Synonyms:	TRIM33 Antibody, ECTO, PTC7, RFG7, TF1G, TIF1G, TIFGAMMA, TIF1GAMMA, KIAA1113, E3 ubiquitin-protein ligase TRIM33, Ectodermin homolog, Protein Rfg7
Host Species:	Rabbit
Clonality:	Polyclonal
Format:	IgG

Target Details

Gene Name:	TRIM33
Reactivity:	Human, Mouse, Rat
Immunogen Type:	Conjugated Peptide
Immunogen:	Anti-TRIM33 antibody was prepared from whole rabbit serum produced by repeated immunizations with an 18 amino acid peptide near the internal region of human TRIM33.

Purity/Specificity: Anti-TRIM33 Antibody was affinity purified from monospecific antiserum by immunoaffinity chromatography. TRIM33 antibody is human, mouse and rat reactive. At least two isoforms of TRIM33 are known to exist.

Relevant Links:

- [UniProtKB - Q9UPN9](#)
- [GeneID - 51592](#)
- [NCBI - NP_056990.3](#)

Application Details

Tested Applications: ELISA, IF, IHC, WB

Application Note: Anti-TRIM33 Antibody has been tested for use in ELISA, Western Blotting, Immunohistochemistry and Immunofluorescence. Specific conditions for reactivity should be optimized by the end user. Expect a band at approximately 123 kDa in Western Blots of specific cell lysates and tissues.

Assay Dilutions: All assays should be optimized by the user. Recommended dilutions (if any) may be listed below.

ELISA: 1:10,000 - 1:20,000

IF: User Optimized

IHC: User Optimized

WB: 1-2 µg/mL

Formulation

Physical State: Liquid (sterile filtered)

Concentration: 1 mg/mL by UV absorbance at 280 nm

Buffer: 0.01 M Sodium Phosphate, 0.25 M Sodium Chloride, pH 7.2

Preservative: 0.02% (w/v) Sodium Azide

Stabilizer: None

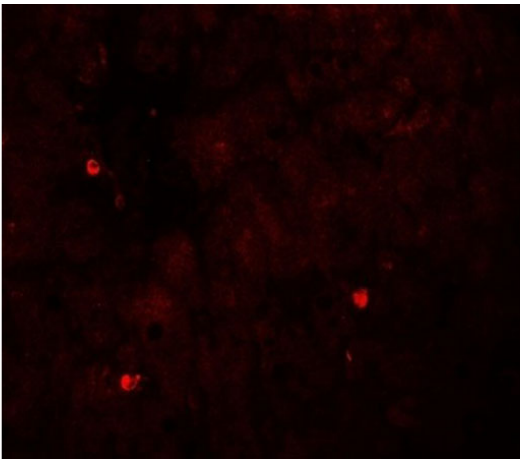
Shipping & Handling

Shipping Condition: Dry Ice

Storage Condition: Store vial at -20° C prior to opening. Aliquot contents and freeze at -20° C or below for extended storage. Avoid cycles of freezing and thawing. Centrifuge product if not completely clear after standing at room temperature. This product is stable for several weeks at 4° C as an undiluted liquid. Dilute only prior to immediate use.

Expiration: Expiration date is one (1) year from date of receipt.

Images

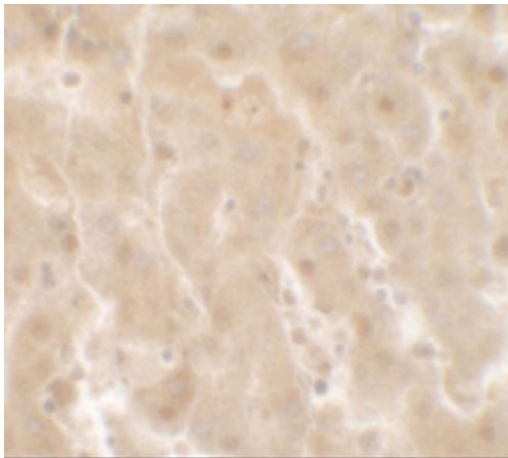


Immunofluorescence Microscopy

Immunofluorescence of TRIM33.

Tissue: human liver tissue.

Primary Antibody: TRIM33 antibody at 20 µg/mL.

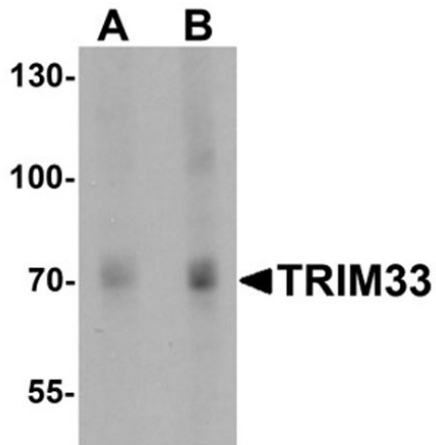


Immunohistochemistry

Immunohistochemistry of TRIM33.

Tissue: human liver tissue.

Primary Antibody: TRIM33 antibody at 2.5 µg/mL.

**Western Blot**

Western blot of TRIM33.

Load: human liver tissue lysate.

Primary Antibody: TRIM33 antibody at (A) 1 and (B) 2 $\mu\text{g}/\text{mL}$.

Disclaimer

This product is for research use only and is not intended for therapeutic or diagnostic applications. Please contact a technical service representative for more information. All products of animal origin manufactured by Rockland Immunochemicals are derived from starting materials of North American origin. Collection was performed in United States Department of Agriculture (USDA) inspected facilities and all materials have been inspected and certified to be free of disease and suitable for exportation. All properties listed are typical characteristics and are not specifications. All suggestions and data are offered in good faith but without guarantee as conditions and methods of use of our products are beyond our control. All claims must be made within 30 days following the date of delivery. The prospective user must determine the suitability of our materials before adopting them on a commercial scale. Suggested uses of our products are not recommendations to use our products in violation of any patent or as a license under any patent of Rockland Immunochemicals, Inc. If you require a commercial license to use this material and do not have one, then return this material, unopened to: Rockland Inc., P.O. BOX 5199, Limerick, Pennsylvania, USA.