

Datasheet for 600-401-FP2**TRIM28 Antibody****Overview**

Description:	Anti-TRIM28 (RABBIT) Antibody - 600-401-FP2
Item No.:	600-401-FP2
Size:	100 µg
Applications:	ELISA, WB
Reactivity:	Human, Mouse, Rat
Host Species:	Rabbit

Product Details

Background:	TRIM28, also known as KAP-1, is a member of the Transcriptional Intermediary Factor 1 (TIF1) subfamily and contains a RING finger, B box, Coiled coil, PHD/TTC, and bromodomain. TRIM28 is a corepressor for Kruppel-associated box (KRAB)-domain-containing zinc finger proteins and plays a critical role in early embryogenesis. TRIM28 acts as a transcriptional mediator by binding liganded nuclear receptors, including retinoic acid (RAR), retinoid X (RXR) and estrogen (ER) receptors. TRIM28 associates with both heterochromatin and euchromatin, causing gene silencing by both HP1 binding and histone deacetylation.
Synonyms:	TRIM28 Antibody, KAP1, TF1B, RNF96, TIF1B, KAP1, Transcription intermediary factor 1-beta, E3 SUMO-protein ligase TRIM28, TIF1-beta
Host Species:	Rabbit
Clonality:	Polyclonal
Format:	IgG

Target Details

Gene Name:	TRIM28
Reactivity:	Human, Mouse, Rat
Immunogen Type:	Conjugated Peptide
Immunogen:	Anti-TRIM28 antibody was prepared from whole rabbit serum produced by repeated immunizations with a 14 amino acid peptide near the C-terminus of human TRIM28.

Purity/Specificity: Anti-TRIM28 Antibody was affinity purified from monospecific antiserum by immunoaffinity chromatography. At least three isoforms of TRIM28 are known to exist; this antibody will detect all three isoforms.

Relevant Links:

- [UniProtKB - Q13263](#)
- [GeneID - 10155](#)
- [NCBI - NP_005753.1](#)

Application Details

Tested Applications: ELISA, WB

Application Note: Anti-TRIM28 Antibody has been tested for use in ELISA and Western Blotting. Specific conditions for reactivity should be optimized by the end user. Expect a band at approximately 89 kDa in Western Blots of specific cell lysates and tissues.

Assay Dilutions: All assays should be optimized by the user. Recommended dilutions (if any) may be listed below.

ELISA: 1:10,000 - 1:20,000

WB: 1-2 µg/mL

Formulation

Physical State: Liquid (sterile filtered)

Concentration: 1 mg/mL by UV absorbance at 280 nm

Buffer: 0.01 M Sodium Phosphate, 0.25 M Sodium Chloride, pH 7.2

Preservative: 0.02% (w/v) Sodium Azide

Stabilizer: None

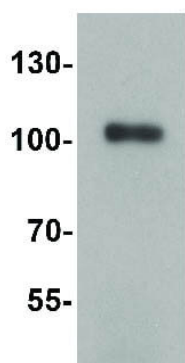
Shipping & Handling

Shipping Condition: Dry Ice

Storage Condition: Store vial at -20° C prior to opening. Aliquot contents and freeze at -20° C or below for extended storage. Avoid cycles of freezing and thawing. Centrifuge product if not completely clear after standing at room temperature. This product is stable for several weeks at 4° C as an undiluted liquid. Dilute only prior to immediate use.

Expiration: Expiration date is one (1) year from date of receipt.

Images



Western Blot

Western Blot of TRIM28 antibody. Lane 1: Human testis tissue lysate. Load: 35 μ g per lane. Primary antibody: TRIM28 antibody at 1 μ g/mL for overnight at 4°C. Secondary antibody: Peroxidase rabbit secondary antibody at 1:10,000 for 45 min at RT. Block: 5% BLOTTO overnight at 4°C. Predicted/Observed size: 85.6 kDa, 105 kDa for TRIM28.

Disclaimer

This product is for research use only and is not intended for therapeutic or diagnostic applications. Please contact a technical service representative for more information. All products of animal origin manufactured by Rockland Immunochemicals are derived from starting materials of North American origin. Collection was performed in United States Department of Agriculture (USDA) inspected facilities and all materials have been inspected and certified to be free of disease and suitable for exportation. All properties listed are typical characteristics and are not specifications. All suggestions and data are offered in good faith but without guarantee as conditions and methods of use of our products are beyond our control. All claims must be made within 30 days following the date of delivery. The prospective user must determine the suitability of our materials before adopting them on a commercial scale. Suggested uses of our products are not recommendations to use our products in violation of any patent or as a license under any patent of Rockland Immunochemicals, Inc. If you require a commercial license to use this material and do not have one, then return this material, unopened to: Rockland Inc., P.O. BOX 5199, Limerick, Pennsylvania, USA.