

**Datasheet for 600-401-FP1**  
**TRIM25 Antibody****Overview**

<b>Description:</b>	Anti-TRIM25 (RABBIT) Antibody - 600-401-FP1
<b>Item No.:</b>	600-401-FP1
<b>Size:</b>	100 µg
<b>Applications:</b>	ELISA, IF, IHC, WB
<b>Reactivity:</b>	Human
<b>Host Species:</b>	Rabbit

**Product Details**

<b>Background:</b>	TRIM25, also known as estrogen responsive finger protein (EFP) is a member of the RING finger-B box-coiled coil family and is a downstream target of estrogen receptor $\alpha$ . Mice lacking this gene displayed an underdeveloped uterus and reduced estrogen responsiveness demonstrating that this protein is essential for estrogen dependent proliferation. TRIM25 expression is increased in breast carcinoma where it promotes the growth of breast tumor by functioning as an E3 ubiquitin ligase that targets the negative cell cycle checkpoint 14-3-3s. Recent reports have indicated that TRIM25 E3 ubiquitin ligase is essential for the retinoic-acid-inducible gene 1 (RIG-1) signaling pathway to elicit host antiviral innate immunity.
<b>Synonyms:</b>	TRIM25 Antibody, EFP, Z147, RNF147, ZNF147, EFP, Estrogen-responsive finger protein
<b>Host Species:</b>	Rabbit
<b>Clonality:</b>	Polyclonal
<b>Format:</b>	IgG

**Target Details**

<b>Gene Name:</b>	TRIM25
<b>Reactivity:</b>	Human
<b>Immunogen Type:</b>	Conjugated Peptide
<b>Immunogen:</b>	Anti-TRIM25 antibody was prepared from whole rabbit serum produced by repeated immunizations with a 15 amino acid synthetic peptide from near the N-terminus of human TRIM25.

<b>Purity/Specificity:</b>	Anti-TRIM25 Antibody was affinity purified from monospecific antiserum by immunoaffinity chromatography. Cross reactivity with TRIM25 from other sources has not been determined.
<b>Relevant Links:</b>	<ul style="list-style-type: none"><li>• <a href="#">UniProtKB - Q14258</a></li><li>• <a href="#">GeneID - 7706</a></li><li>• <a href="#">NCBI - NP_005073.2</a></li></ul>

## Application Details

<b>Tested Applications:</b>	ELISA, IF, IHC, WB
<b>Application Note:</b>	Anti-TRIM25 Antibody has been tested for use in ELISA, Western Blotting, Immunocytochemistry and Immunofluorescence. Specific conditions for reactivity should be optimized by the end user. Expect a band at approximately 71 kDa in Western Blots of specific cell lysates and tissues.
<b>Assay Dilutions:</b>	All assays should be optimized by the user. Recommended dilutions (if any) may be listed below.
<b>ELISA:</b>	1:10,000
<b>IF:</b>	20 µg/mL
<b>WB:</b>	1 µg/mL

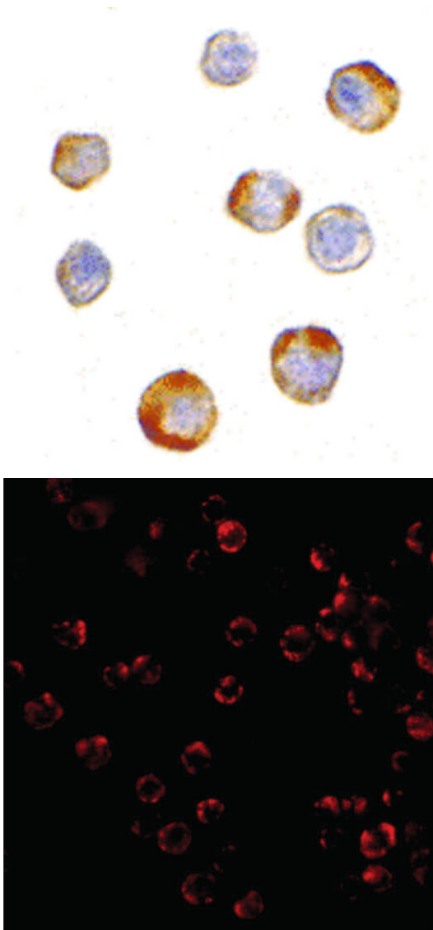
## Formulation

<b>Physical State:</b>	Liquid (sterile filtered)
<b>Concentration:</b>	1 mg/mL by UV absorbance at 280 nm
<b>Buffer:</b>	0.01 M Sodium Phosphate, 0.25 M Sodium Chloride, pH 7.2
<b>Preservative:</b>	0.02% (w/v) Sodium Azide
<b>Stabilizer:</b>	None

## Shipping & Handling

<b>Shipping Condition:</b>	Dry Ice
<b>Storage Condition:</b>	Store vial at -20° C prior to opening. Aliquot contents and freeze at -20° C or below for extended storage. Avoid cycles of freezing and thawing. Centrifuge product if not completely clear after standing at room temperature. This product is stable for several weeks at 4° C as an undiluted liquid. Dilute only prior to immediate use.
<b>Expiration:</b>	Expiration date is one (1) year from date of receipt.

## Images

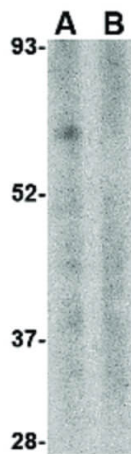


### Immunohistochemistry

Immunocytochemistry of TRIM25 antibody. Tissue: HeLa cells. Fixation: formalin fixed paraffin embedded. Antigen retrieval: not required. Primary antibody: TRIM25 antibody at 5  $\mu\text{g}/\text{mL}$  for 1 h at RT. Secondary antibody: Peroxidase rabbit secondary antibody at 1:10,000 for 45 min at RT. Localization: TRIM25 is nuclear and occasionally cytoplasmic. Staining: TRIM25 as precipitated brown signal with hematoxylin purple counterstain.

### Immunofluorescence Microscopy

Immunofluorescence Microscopy of TRIM25 antibody. Tissue: HeLa cells. Fixation: 0.5% PFA. Antigen retrieval: not required. Primary antibody: TRIM25 antibody at 20  $\mu\text{g}/\text{mL}$  for 1 h at RT. Secondary antibody: Fluorescein rabbit secondary antibody at 1:10,000 for 45 min at RT. Staining: TRIM25 as a red fluorescent signal.



### Western Blot

Western Blot of TRIM25 antibody. Lane A: Human thymus tissue lysate in the absence of blocking peptide. Lane B: Human thymus tissue lysate in the presence of blocking peptide. Load: 35  $\mu\text{g}$  per lane. Primary Antibody: Anti-TRIM25 at 1  $\mu\text{g}/\text{mL}$ . Secondary antibody: Peroxidase rabbit secondary antibody at 1:10,000 for 45 min at RT. Block: 5% BLOTTO overnight at 4°C. Predicted/Observed size: 38.9 kDa, ~62 kDa for TRIM25.

## Disclaimer

This product is for research use only and is not intended for therapeutic or diagnostic applications. Please contact a technical service representative for more information. All products of animal origin manufactured by Rockland Immunochemicals are derived from starting materials of North American origin. Collection was performed in United States Department of Agriculture (USDA) inspected facilities and all materials have been inspected and certified to be free of disease and suitable for exportation. All properties listed are typical characteristics and are not specifications. All suggestions and data are offered in good faith but without guarantee as conditions and methods of use of our products are beyond our control. All claims must be made within 30 days following the date of delivery. The prospective user must determine the suitability of our materials before adopting them on a commercial scale. Suggested uses of our products are not recommendations to use our products in violation of any patent or as a license under any patent of Rockland Immunochemicals, Inc. If you require a commercial license to use this material and do not have one, then return this material, unopened to: Rockland Inc., P.O. BOX 5199, Limerick, Pennsylvania, USA.