

**Datasheet for 600-401-FM5****TRAF2 Antibody****Overview**

<b>Description:</b>	Anti-TRAF2 (RABBIT) Antibody - 600-401-FM5
<b>Item No.:</b>	600-401-FM5
<b>Size:</b>	100 µg
<b>Applications:</b>	ELISA, IHC, IP, WB
<b>Reactivity:</b>	Human, Mouse, Rat
<b>Host Species:</b>	Rabbit

**Product Details**

<b>Background:</b>	Tumor necrosis factor (TNF) receptor associated factors (TRAFs) were initially discovered as adaptor proteins that link the TNF receptor superfamily to signaling pathways and are thus important regulators of cell death and cellular response to stress. TRAF proteins share a homology region that allows them to bind to cell receptors and other TRAF proteins, causing the activation of different signal cascades depending on the TRAFs involved. For example, TRAF2 and TRAF3 directly bind to the CD40, a TNF receptor superfamily member involved in inducing B cell immunity, and are critical for NF-κB activation in mouse B lymphocytes. TRAF2 along with TRAF6 has also been shown to be required for CD40 signaling in nonhemopoietic cells. TRAF2 also interacts with the TRFR superfamily member lymphotoxin-beta receptor (LTβR) in association with TRAF3 and the apoptosis inhibitors cIAP1 and Smac.
<b>Synonyms:</b>	TRAF2 Antibody, TRAP, TRAP3, MGC,45012, TNF receptor-associated factor 2, E3 ubiquitin-protein ligase TRAF2
<b>Host Species:</b>	Rabbit
<b>Clonality:</b>	Polyclonal
<b>Format:</b>	IgG

**Target Details**

<b>Gene Name:</b>	TRAF2
<b>Reactivity:</b>	Human, Mouse, Rat
<b>Immunogen Type:</b>	Conjugated Peptide

<b>Immunogen:</b>	Anti-TRAF2 antibody was prepared from whole rabbit serum produced by repeated immunizations with a 17 amino acid synthetic peptide from near the C-terminus of human TRAF2.
<b>Purity/Specificity:</b>	Anti-TRAF2 Antibody was affinity purified from monospecific antiserum by immunoaffinity chromatography. Cross reactivity with TRAF2 from other sources has not been determined.
<b>Relevant Links:</b>	<ul style="list-style-type: none"><li>• <a href="#">UniProtKB - Q12933</a></li><li>• <a href="#">GeneID - 7186</a></li><li>• <a href="#">NCBI - NP_066961.2</a></li></ul>

## Application Details

<b>Tested Applications:</b>	ELISA, IHC, IP, WB
<b>Application Note:</b>	Anti-TRAF2 Antibody has been tested for use in ELISA, Western Blotting, Immunohistochemistry and Immunoprecipitation. Specific conditions for reactivity should be optimized by the end user. Expect a band at approximately 56 kDa in Western Blots of specific cell lysates and tissues.
<b>Assay Dilutions:</b>	All assays should be optimized by the user. Recommended dilutions (if any) may be listed below.
<b>ELISA:</b>	1:5000-1:20,000
<b>IHC:</b>	10 µg/mL
<b>IP:</b>	User Optimized
<b>WB:</b>	0.5-2 µg/mL

## Formulation

<b>Physical State:</b>	Liquid (sterile filtered)
<b>Concentration:</b>	1.0 mg/ml by UV absorbance at 280 nm
<b>Buffer:</b>	0.01 M Sodium Phosphate, 0.25 M Sodium Chloride, pH 7.2
<b>Preservative:</b>	0.02% (w/v) Sodium Azide
<b>Stabilizer:</b>	None

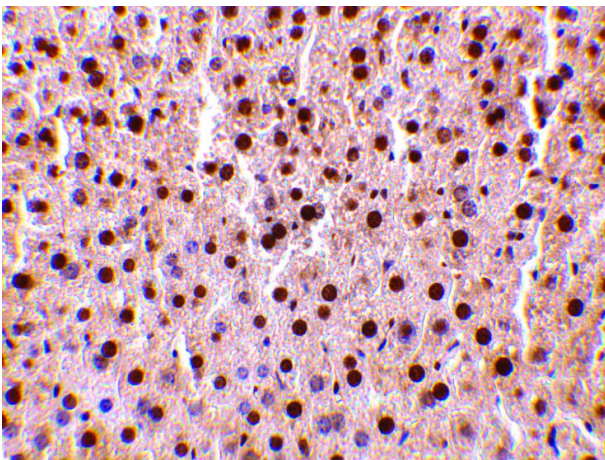
## Shipping & Handling

<b>Shipping Condition:</b>	Dry Ice
----------------------------	---------

**Storage Condition:** Store vial at -20° C prior to opening. Aliquot contents and freeze at -20° C or below for extended storage. Avoid cycles of freezing and thawing. Centrifuge product if not completely clear after standing at room temperature. This product is stable for several weeks at 4° C as an undiluted liquid. Dilute only prior to immediate use.

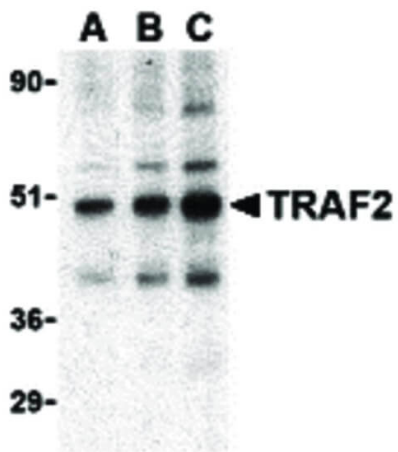
**Expiration:** Expiration date is one (1) year from date of receipt.

## Images



### Immunohistochemistry

Immunohistochemistry of TRAF2 antibody. Tissue: mouse liver tissue. Fixation: formalin fixed paraffin embedded. Antigen retrieval: not required. Primary antibody: TRAF2 antibody at 10 µg/mL for 1 h at RT. Secondary antibody: Peroxidase rabbit secondary antibody at 1:10,000 for 45 min at RT. Localization: TRAF2 is located in the membrane, mitochondrion, and mitochondrion outer membrane. Staining: TRAF2 is stained with hematoxylin purple nuclear counterstain.



### Western Blot

Western Blot of TRAF2 antibody in mouse liver tissue lysate. Lane A: TRAF2 antibody at 0.5 µg/mL. Lane B: TRAF2 antibody at 1 µg/mL. Lane C: TRAF2 antibody at 2 µg/mL. Load: 35 µg per lane. Primary antibody: TRAF2 antibody at 1:400 for overnight at 4°C. Secondary antibody: Peroxidase rabbit secondary antibody at 1:10,000 for 45 min at RT. Block: 5% BLOTTO overnight at 4°C. Predicted/Observed size: 67 kDa, 50 kDa for TRAF2. Other band(s): TRAF2 splice variants and isoforms.

## Disclaimer

This product is for research use only and is not intended for therapeutic or diagnostic applications. Please contact a technical service representative for more information. All products of animal origin manufactured by Rockland Immunochemicals are derived from starting materials of North American origin. Collection was performed in United States Department of Agriculture (USDA) inspected facilities and all materials have been inspected and certified to be free of disease and suitable for exportation. All properties listed are typical characteristics and are not specifications. All suggestions and data are offered in good faith but without guarantee as conditions and methods of use of our products are beyond our control. All claims must be made within 30 days following the date of delivery. The prospective user must determine the suitability of our materials before adopting them on a commercial scale. Suggested uses of our products are not recommendations to use our products in violation of any patent or as a license under any patent of Rockland Immunochemicals, Inc. If you require a commercial license to use this material and do not have one, then return this material, unopened to: Rockland Inc., P.O. BOX 5199, Limerick, Pennsylvania, USA.