

**Datasheet for 600-401-FM4****TPT1 Antibody****Overview**

<b>Description:</b>	Anti-TPT1 (RABBIT) Antibody - 600-401-FM4
<b>Item No.:</b>	600-401-FM4
<b>Size:</b>	100 µg
<b>Applications:</b>	ELISA, IF, IHC, WB
<b>Reactivity:</b>	Human, Mouse, Rat
<b>Host Species:</b>	Rabbit

**Product Details**

<b>Background:</b>	TPT1 (translationally controlled tumor protein 1) is a 23 kDa member of the TCTP family of calcium binding proteins. TPT1 is localized in the cytoplasm and widely expressed and serves as a transcriptional activator, calcium transporter, histamine inducer and antiapoptotic caspase 3 inhibitor. TPT1 is a cytokine-like molecule that causes the release of histamine, IL-4 and IL-13 from basophils as well as the secretion of IL-8 and a calcium response in eosinophils. TPT1 plays a pivotal role in allergic diseases and due to its wide distribution in brain, is thought to be involved in neurodegenerative disorders, such as Alzheimer's disease and Down syndrome.
<b>Synonyms:</b>	TPT1 Antibody, HRF, p02, p23, TCTP, Translationally-controlled tumor protein, Fortilin
<b>Host Species:</b>	Rabbit
<b>Clonality:</b>	Polyclonal
<b>Format:</b>	IgG

**Target Details**

<b>Gene Name:</b>	TPT1
<b>Reactivity:</b>	Human, Mouse, Rat
<b>Immunogen Type:</b>	Conjugated Peptide
<b>Immunogen:</b>	Anti-TPT1 antibody was prepared from whole rabbit serum produced by repeated immunizations with a 19 amino acid peptide near the internal region of human TPT1.

**Purity/Specificity:** Anti-TPT1 Antibody was affinity purified from monospecific antiserum by immunoaffinity chromatography. Cross reactivity with TPT1 from other sources has not been determined.

**Relevant Links:**

- [UniProtKB - P13693](#)
- [GeneID - 7178](#)
- [NCBI - NP\\_001273202.1](#)

## Application Details

**Tested Applications:** ELISA, IF, IHC, WB

**Application Note:** Anti-TPT1 Antibody has been tested for use in ELISA, Western Blotting, Immunohistochemistry and Immunofluorescence. Specific conditions for reactivity should be optimized by the end user. Expect a band at approximately 20 kDa in Western Blots of specific cell lysates and tissues.

**Assay Dilutions:** All assays should be optimized by the user. Recommended dilutions (if any) may be listed below.

**ELISA:** 1:5000 - 1:10000

**IF:** User Optimized

**IHC:** User Optimized

**WB:** 0.5-1 µg/mL

## Formulation

**Physical State:** Liquid (sterile filtered)

**Concentration:** 1 mg/mL by UV absorbance at 280 nm

**Buffer:** 0.01 M Sodium Phosphate, 0.25 M Sodium Chloride, pH 7.2

**Preservative:** 0.02% (w/v) Sodium Azide

**Stabilizer:** None

## Shipping & Handling

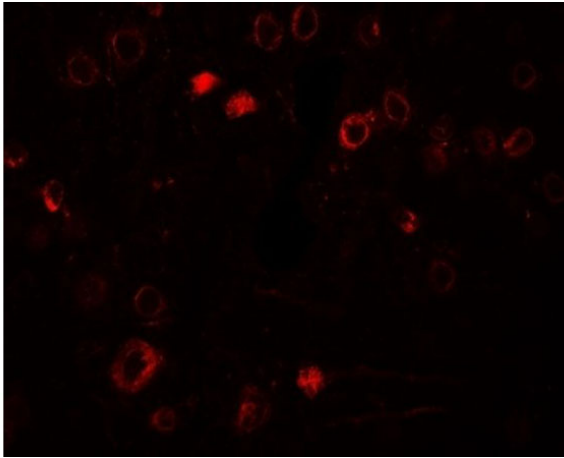
**Shipping Condition:** Dry Ice

**Storage Condition:** Store vial at -20° C prior to opening. Aliquot contents and freeze at -20° C or below for extended storage. Avoid cycles of freezing and thawing. Centrifuge product if not completely clear after standing at room temperature. This product is stable for several weeks at 4° C as an undiluted liquid. Dilute only prior to immediate use.

**Expiration:** Expiration date is one (1) year from date of receipt.

---

## Images

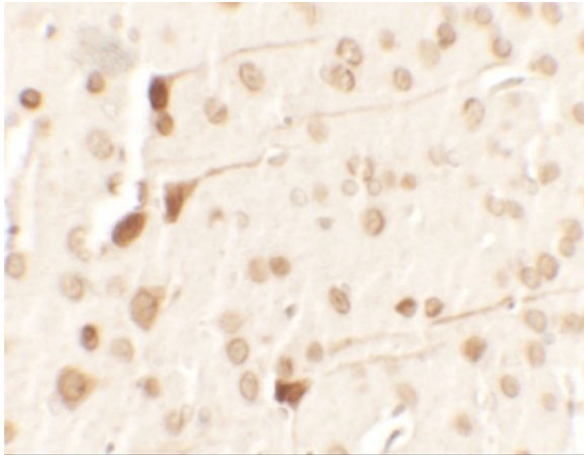


### **Immunofluorescence Microscopy**

Immunofluorescence of TPT1.

Tissue: rat brain tissue.

Primary Antibody: TPT1 antibody at 20  $\mu\text{g/ml}$ .

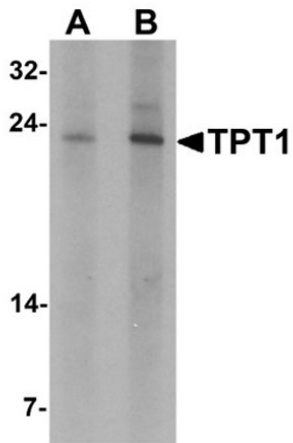


### **Immunohistochemistry**

Immunohistochemistry of TPT1.

Tissue: rat brain tissue.

Primary Antibody: TPT1 antibody at 2.5  $\mu\text{g/ml}$ .

**Western Blot**

Western blot analysis of TPT1.

Load: human brain tissue lysate.

Primary Antibody: TPT1 antibody at (A) 0.5 and (B) 1 µg/mL.

**Disclaimer**

This product is for research use only and is not intended for therapeutic or diagnostic applications. Please contact a technical service representative for more information. All products of animal origin manufactured by Rockland Immunochemicals are derived from starting materials of North American origin. Collection was performed in United States Department of Agriculture (USDA) inspected facilities and all materials have been inspected and certified to be free of disease and suitable for exportation. All properties listed are typical characteristics and are not specifications. All suggestions and data are offered in good faith but without guarantee as conditions and methods of use of our products are beyond our control. All claims must be made within 30 days following the date of delivery. The prospective user must determine the suitability of our materials before adopting them on a commercial scale. Suggested uses of our products are not recommendations to use our products in violation of any patent or as a license under any patent of Rockland Immunochemicals, Inc. If you require a commercial license to use this material and do not have one, then return this material, unopened to: Rockland Inc., P.O. BOX 5199, Limerick, Pennsylvania, USA.