

Datasheet for 600-401-FL6**TOLLIP Antibody****Overview**

Description:	Anti-TOLLIP (RABBIT) Antibody - 600-401-FL6
Item No.:	600-401-FL6
Size:	100 µg
Applications:	ELISA, IF, IHC, WB
Reactivity:	Human, Mouse, Rat
Host Species:	Rabbit

Product Details

Background:	Toll-like receptors (TLRs) are evolutionarily conserved pattern-recognition molecules resembling the toll proteins that mediate antimicrobial responses in <i>Drosophila</i> . These proteins recognize different microbial products during infection and serve as an important link between the innate and adaptive immune responses. The TLRs act through adaptor molecules to activate various kinases and transcription factors so the organism can respond to potential infection. These adaptor molecules include TOLLIP, MyD88, and TRIF. TOLLIP associates directly with TLR2 and TLR 4, acting as an inhibitor to TLR activation. This negative regulation of TLR signaling may serve to limit the production of proinflammatory mediators during infection and inflammation.
Synonyms:	TOLLIP Antibody, IL-1RAcPI, Toll-interacting protein
Host Species:	Rabbit
Clonality:	Polyclonal
Format:	IgG

Target Details

Gene Name:	TOLLIP
Reactivity:	Human, Mouse, Rat
Immunogen Type:	Conjugated Peptide
Immunogen:	Anti-TOLLIP antibody was prepared from whole rabbit serum produced by repeated immunizations with a 16 amino acid synthetic peptide from near the C-terminus of human TOLLIP.

Purity/Specificity: Anti-TOLLIP Antibody was affinity purified from monospecific antiserum by immunoaffinity chromatography. Cross reactivity with TOLLIP from other sources has not been determined.

Relevant Links:

- [UniProtKB - Q9H0E2](#)
- [GeneID - 54472](#)
- [NCBI - NP_001305441.1](#)

Application Details

Tested Applications: ELISA, IF, IHC, WB

Application Note: Anti-TOLLIP Antibody has been tested for use in ELISA, Western Blotting, Immunocytochemistry, immunohistochemistry, and immunofluorescence. Specific conditions for reactivity should be optimized by the end user. Expect a band at approximately 30 kDa in Western Blots of specific cell lysates and tissues.

Assay Dilutions: All assays should be optimized by the user. Recommended dilutions (if any) may be listed below.

ELISA: 1:10,000 - 1:20,000

IF: 20 µg/mL

IHC: 5 µg/mL

WB: 1-2 µg/mL

Formulation

Physical State: Liquid (sterile filtered)

Concentration: 1 mg/mL by UV absorbance at 280 nm

Buffer: 0.01 M Sodium Phosphate, 0.25 M Sodium Chloride, pH 7.2

Preservative: 0.02% (w/v) Sodium Azide

Stabilizer: None

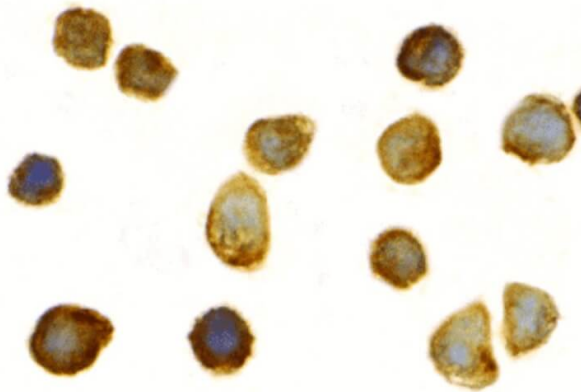
Shipping & Handling

Shipping Condition: Dry Ice

Storage Condition: Store vial at -20° C prior to opening. Aliquot contents and freeze at -20° C or below for extended storage. Avoid cycles of freezing and thawing. Centrifuge product if not completely clear after standing at room temperature. This product is stable for several weeks at 4° C as an undiluted liquid. Dilute only prior to immediate use.

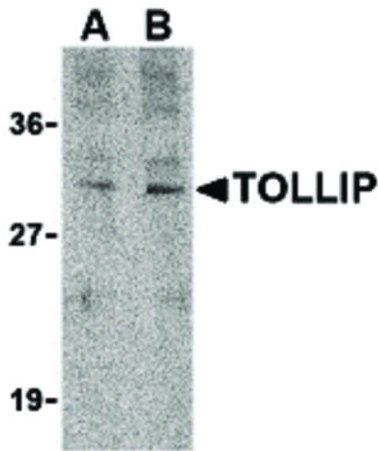
Expiration: Expiration date is one (1) year from date of receipt.

Images



Immunohistochemistry

Immunocytochemistry of TOLLIP antibody. Cell Type: THP-1 cells. Fixation: formalin fixed paraffin embedded. Antigen retrieval: not required. Primary antibody: TOLLIP antibody at 2 µg/mL for 1 h at RT. Secondary antibody: Peroxidase rabbit secondary antibody at 1:10,000 for 45 min at RT. Localization: TOLLIP is located in the cell membrane. Staining: TOLLIP is stained brown with hematoxylin purple nuclear counterstain.



Western Blot

Western Blot of TOLLIP antibody in rat brain cell lysate. Lane A: TOLLIP antibody at 1 µg/mL. Lane B: TOLLIP antibody at 2 µg/mL. Load: 35 µg per lane. Primary antibody: TOLLIP antibody at designated concentrations for overnight at 4°C. Secondary antibody: Peroxidase rabbit secondary antibody at 1:10,000 for 45 min at RT. Block: 5% BLOTTO overnight at 4°C. Predicted/Observed size: 30 kDa, 28 kDa for TOLLIP. Other band(s): TOLLIP splice variants and isoforms.

Disclaimer

This product is for research use only and is not intended for therapeutic or diagnostic applications. Please contact a technical service representative for more information. All products of animal origin manufactured by Rockland Immunochemicals are derived from starting materials of North American origin. Collection was performed in United States Department of Agriculture (USDA) inspected facilities and all materials have been inspected and certified to be free of disease and suitable for exportation. All properties listed are typical characteristics and are not specifications. All suggestions and data are offered in good faith but without guarantee as conditions and methods of use of our products are beyond our control. All claims must be made within 30 days following the date of delivery. The prospective user must determine the suitability of our materials before adopting them on a commercial scale. Suggested uses of our products are not recommendations to use our products in violation of any patent or as a license under any patent of Rockland Immunochemicals, Inc. If you require a commercial license to use this material and do not have one, then return this material, unopened to: Rockland Inc., P.O. BOX 5199, Limerick, Pennsylvania, USA.