

Datasheet for 600-401-FK3

TMIGD2 Antibody

Overview

Description:	Anti-TMIGD2 (RABBIT) Antibody - 600-401-FK3
Item No.:	600-401-FK3
Size:	100 µg
Applications:	ELISA, IHC, WB
Reactivity:	Human
Host Species:	Rabbit

Product Details

Background:	TMIGD2 (transmembrane and immunoglobulin domain containing 1), also known as immunoglobulin-containing and proline-rich receptor 1 (IGPR1), is novel adhesion molecule that is expressed in multiple tissues, primarily in cells of epithelium and endothelium origins. TMIGD2 is thought to be involved in angiogenesis and regulates cellular morphology, homophilic cell aggregation, and cell-cell interaction. TMIGD2 activity also modulates actin stress fiber formation and focal adhesion and reduces cell migration.
Synonyms:	TMIGD2 Antibody, IGPR1, IGPR-1, IGPR1, UNQ3059/PRO9879, Transmembrane and immunoglobulin domain-containing protein 2, Immunoglobulin and proline-rich receptor 1
Host Species:	Rabbit
Clonality:	Polyclonal
Format:	IgG

Target Details

Gene Name:	TMIGD2
Reactivity:	Human
Immunogen Type:	Conjugated Peptide
Immunogen:	Anti-TMIGD2 antibody was prepared from whole rabbit serum produced by repeated immunizations with an 18 amino acid peptide near the C-terminus of human TMIGD2.

Purity/Specificity: Anti-TMIGD2 antibody was affinity purified from monospecific antiserum by immunoaffinity chromatography. TMIGD2 antibody is human and mouse reactive. At least three isoforms of TMIGD2 are known to exist; this antibody will detect all three. TMIGD2 antibody is predicted to not cross-react with TMIGD1.

Relevant Links:

- [UniProtKB - Q96BF3](#)
- [GeneID - 126259](#)
- [NCBI - NP_001162597.1](#)

Application Details

Tested Applications: ELISA, IHC, WB

Application Note: Anti-TMIGD2 Antibody has been tested for use in ELISA, Western Blotting, and Immunohistochemistry. Specific conditions for reactivity should be optimized by the end user. Expect a band at approximately 31 kDa in Western Blots of specific cell lysates and tissues.

Assay Dilutions: All assays should be optimized by the user. Recommended dilutions (if any) may be listed below.

ELISA: 1:10,000-1:20,000

IHC: 5 µg/mL

WB: 1-2 µg/mL

Formulation

Physical State: Liquid (sterile filtered)

Concentration: 1.0 mg/ml by UV absorbance at 280 nm

Buffer: 0.01 M Sodium Phosphate, 0.25 M Sodium Chloride, pH 7.2

Preservative: 0.02% (w/v) Sodium Azide

Stabilizer: None

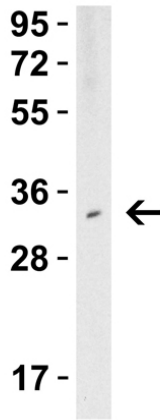
Shipping & Handling

Shipping Condition: Wet Ice

Storage Condition: Store vial at 2-8° C prior to opening. Aliquot contents and freeze at -20° C or below for extended storage. Avoid cycles of freezing and thawing. Centrifuge product if not completely clear after standing at room temperature. Dilute only prior to immediate use.

Expiration: Expiration date is one (1) year from date of receipt.

Images



Western Blot

Western Blot results of Rabbit Anti-TMIGD2 Antibody.
Lane 1: Human Spleen Lysate [15 μ g].
Primary Antibody: Anti-TMIGD2 at 1 μ g/mL for 1hr at RT.
Secondary Antibody: Goat Anti-Rabbit IgG HRP at 1:10,000.
Blocking: 5% Non Fat Dry Milk/TBST.

Disclaimer

This product is for research use only and is not intended for therapeutic or diagnostic applications. Please contact a technical service representative for more information. All products of animal origin manufactured by Rockland Immunochemicals are derived from starting materials of North American origin. Collection was performed in United States Department of Agriculture (USDA) inspected facilities and all materials have been inspected and certified to be free of disease and suitable for exportation. All properties listed are typical characteristics and are not specifications. All suggestions and data are offered in good faith but without guarantee as conditions and methods of use of our products are beyond our control. All claims must be made within 30 days following the date of delivery. The prospective user must determine the suitability of our materials before adopting them on a commercial scale. Suggested uses of our products are not recommendations to use our products in violation of any patent or as a license under any patent of Rockland Immunochemicals, Inc. If you require a commercial license to use this material and do not have one, then return this material, unopened to: Rockland Inc., P.O. BOX 5199, Limerick, Pennsylvania, USA.