

Datasheet for 600-401-FJ9**TMEM59L Antibody****Overview**

Description:	Anti-TMEM59L (RABBIT) Antibody - 600-401-FJ9
Item No.:	600-401-FJ9
Size:	100 µg
Applications:	ELISA, IF, IHC, WB
Reactivity:	Human, Mouse, Rat
Host Species:	Rabbit

Product Details

Background:	Processing of the amyloid precursor protein (APP) by two different proteases, called alpha- and beta-secretase, is a central regulatory event in the generation of the amyloid beta peptide (Aβ), which has a key role in Alzheimer disease (AD) pathogenesis. TMEM59L is a type I membrane glycoprotein that is expressed in the brain. A related protein, TMEM59, is a Golgi-localized protein that modulates the O-glycosylation and complex N-glycosylation steps occurring during the Golgi maturation of several proteins such as APP, BACE1, SEAP or PRNP and inhibits APP transport and shedding.
Synonyms:	TMEM59L Antibody, BSMAP, C19orf4, BSMAP, Transmembrane protein 59-like, Brain-specific membrane-anchored protein
Host Species:	Rabbit
Clonality:	Polyclonal
Format:	IgG

Target Details

Gene Name:	TMEM59L
Reactivity:	Human, Mouse, Rat
Immunogen Type:	Conjugated Peptide
Immunogen:	Anti-TMEM59L antibody was prepared from whole rabbit serum produced by repeated immunizations with a 19 amino acid synthetic peptide near C-terminus of human TMEM59L.

Purity/Specificity: Anti-TMEM59L Antibody was affinity purified from monospecific antiserum by immunoaffinity chromatography. Multiple isoforms of TMEM59L are known to exist. TMEM59L antibody is predicted to not cross-react TMEM59.

Relevant Links:

- [UniProtKB - Q9UK28](#)
- [GeneID - 25789](#)
- [NCBI - NP_036241.1](#)

Application Details

Tested Applications: ELISA, IF, IHC, WB

Application Note: Anti-TMEM59L Antibody has been tested for use in ELISA, Western Blotting, Immunohistochemistry and Immunofluorescence. Specific conditions for reactivity should be optimized by the end user. Expect a band at approximately 38 kDa in Western Blots of specific cell lysates and tissues.

Assay Dilutions: All assays should be optimized by the user. Recommended dilutions (if any) may be listed below.

ELISA: 1:10,000

IF: 20 µg/mL

IHC: 2.5 µg/mL

WB: 1 µg/mL

Formulation

Physical State: Liquid (sterile filtered)

Concentration: 1 mg/mL by UV absorbance at 280 nm

Buffer: 0.01 M Sodium Phosphate, 0.25 M Sodium Chloride, pH 7.2

Preservative: 0.02% (w/v) Sodium Azide

Stabilizer: None

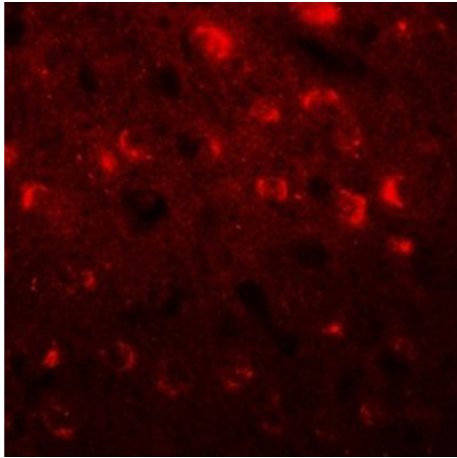
Shipping & Handling

Shipping Condition: Wet Ice

Storage Condition: Antibody can be stored at 4°C up to one year. Antibodies should not be exposed to prolonged high temperatures.

Expiration: Expiration date is one (1) year from date of receipt.

Images

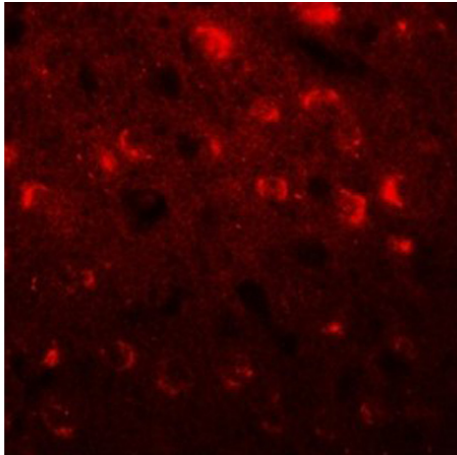


Immunofluorescence Microscopy

Immunofluorescence of TMEM59L.

Tissue: mouse brain tissue.

Primary Antibody: TMEM59L antibody at 20 µg/mL.

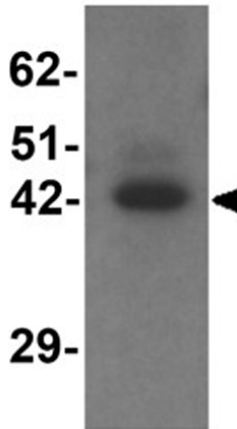


Immunofluorescence Microscopy

Immunofluorescence of TMEM59L.

Tissue: mouse brain tissue.

Primary Antibody: TMEM59L antibody at 20 µg/mL.

**Western Blot**

Western blot analysis of TMEM59L.

Load: rat heart tissue lysate.

Primary Antibody: TMEM59L antibody at 1 $\mu\text{g}/\text{mL}$.

Disclaimer

This product is for research use only and is not intended for therapeutic or diagnostic applications. Please contact a technical service representative for more information. All products of animal origin manufactured by Rockland Immunochemicals are derived from starting materials of North American origin. Collection was performed in United States Department of Agriculture (USDA) inspected facilities and all materials have been inspected and certified to be free of disease and suitable for exportation. All properties listed are typical characteristics and are not specifications. All suggestions and data are offered in good faith but without guarantee as conditions and methods of use of our products are beyond our control. All claims must be made within 30 days following the date of delivery. The prospective user must determine the suitability of our materials before adopting them on a commercial scale. Suggested uses of our products are not recommendations to use our products in violation of any patent or as a license under any patent of Rockland Immunochemicals, Inc. If you require a commercial license to use this material and do not have one, then return this material, unopened to: Rockland Inc., P.O. BOX 5199, Limerick, Pennsylvania, USA.