

Datasheet for 600-401-FJ4**TMEM214 Antibody****Overview**

Description:	Anti-TMEM214 (RABBIT) Antibody - 600-401-FJ4
Item No.:	600-401-FJ4
Size:	100 µg
Applications:	ELISA, IF, IHC, WB
Reactivity:	Human, Mouse, Rat
Host Species:	Rabbit

Product Details

Background:	Transmembrane protein 214 (TMEM214) is a 77kD membrane protein which is widely expressed at high level. The gene encoding this protein maps to chromosome 2, at 2p23.3 TMEM214 interacts with LSM1, an SM-like protein, forming a stable heteromer present in tri-snRNP particles, which are important for pre-mRNA splicing. The detailed function of TMEM214 is still unknown, but a recent study showed that TMEM214 may be used to explore the contribution of human host factors of some infectious diseases such as Dengue fever, West Nile fever and yellow fever. Multiple isoforms of TMEM214 are known to exist.
Synonyms:	TMEM214 Antibody, Transmembrane protein 214
Host Species:	Rabbit
Clonality:	Polyclonal
Format:	IgG

Target Details

Gene Name:	TMEM214
Reactivity:	Human, Mouse, Rat
Immunogen Type:	Conjugated Peptide
Immunogen:	Anti-TMEM214 antibody was prepared from whole rabbit serum produced by repeated immunizations with a 17 amino acid synthetic peptide near the N-terminus of human TMEM214.

Purity/Specificity: Anti-TMEM214 Antibody was affinity purified from monospecific antiserum by immunoaffinity chromatography. Cross reactivity with TMEM214 from other sources has not been determined.

Relevant Links:

- [UniProtKB - Q6NUQ4](#)
- [GeneID - 54867](#)
- [NCBI - NP_001077059.1](#)

Application Details

Tested Applications: ELISA, IF, IHC, WB

Application Note: Anti-TMEM214 Antibody has been tested for use in ELISA, Western Blotting, Immunocytochemistry and Immunofluorescence. Specific conditions for reactivity should be optimized by the end user. Expect a band at approximately 77 kDa in Western Blots of specific cell lysates and tissues.

Assay Dilutions: All assays should be optimized by the user. Recommended dilutions (if any) may be listed below.

ELISA: 1:10,000 - 1:20,000

IF: 20 µg/mL

WB: 1-2 µg/mL

Formulation

Physical State: Liquid (sterile filtered)

Concentration: 1 mg/mL by UV absorbance at 280 nm

Buffer: 0.01 M Sodium Phosphate, 0.25 M Sodium Chloride, pH 7.2

Preservative: 0.02% (w/v) Sodium Azide

Stabilizer: None

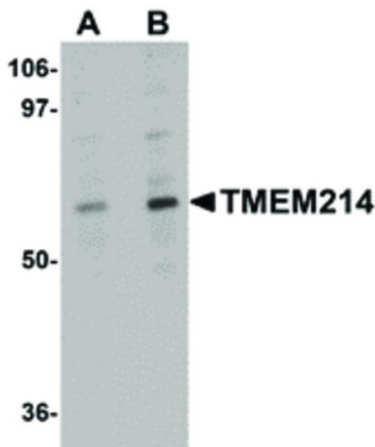
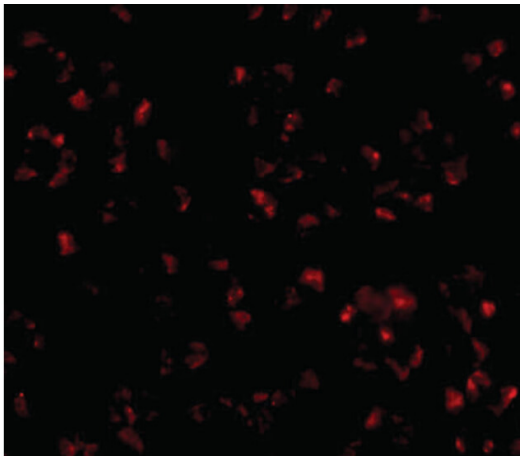
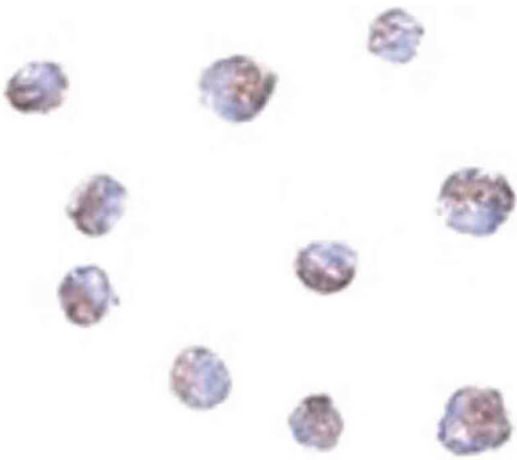
Shipping & Handling

Shipping Condition: Dry Ice

Storage Condition: Store vial at -20° C prior to opening. Aliquot contents and freeze at -20° C or below for extended storage. Avoid cycles of freezing and thawing. Centrifuge product if not completely clear after standing at room temperature. This product is stable for several weeks at 4° C as an undiluted liquid. Dilute only prior to immediate use.

Expiration: Expiration date is one (1) year from date of receipt.

Images



Immunohistochemistry

Immunocytochemistry of TMEM214 antibody. Tissue: A20 cells. Fixation: formalin fixed paraffin embedded. Antigen retrieval: not required. Primary antibody: TMEM214 antibody at 5 $\mu\text{g}/\text{mL}$ for 1 h at RT. Secondary antibody: Peroxidase rabbit secondary antibody at 1:10,000 for 45 min at RT. Localization: TMEM214 is a membrane protein and cytoplasmic. Staining: TMEM214 as precipitated blue signal with brown nuclear counterstain.

Immunofluorescence Microscopy

Immunofluorescence Microscopy of TMEM214 antibody. Tissue: A20 cells. Fixation: 0.5% PFA. Antigen retrieval: not required. Primary antibody: TMEM214 antibody at 20 $\mu\text{g}/\text{mL}$ for 1 h at RT. Secondary antibody: Fluorescein rabbit secondary antibody at 1:10,000 for 45 min at RT. Localization: TMEM214 is a membrane protein and cytoplasmic. Staining: TMEM214 as red fluorescent signal.

Western Blot

Western Blot of TMEM214 antibody. Lane 1: A20 cell lysate with TMEM214 antibody at 1 $\mu\text{g}/\text{mL}$. Lane 2: A20 cell lysate with TMEM214 antibody at 2 $\mu\text{g}/\text{mL}$. Secondary antibody: Peroxidase rabbit secondary antibody at 1:10,000 for 45 min at RT. Block: 5% BLOTTO overnight at 4°C. Predicted/Observed size: 77 kDa, 70 kDa for TMEM214. Other band(s): TMEM214 splice variants and isoforms.

Disclaimer

This product is for research use only and is not intended for therapeutic or diagnostic applications. Please contact a technical service representative for more information. All products of animal origin manufactured by Rockland Immunochemicals are derived from starting materials of North American origin. Collection was performed in United States Department of Agriculture (USDA) inspected facilities and all materials have been inspected and certified to be free of disease and suitable for exportation. All properties listed are typical characteristics and are not specifications. All suggestions and data are offered in good faith but without guarantee as conditions and methods of use of our products are beyond our control. All claims must be made within 30 days following the date of delivery. The prospective user must determine the suitability of our materials before adopting them on a commercial scale. Suggested uses of our products are not recommendations to use our products in violation of any patent or as a license under any patent of Rockland Immunochemicals, Inc. If you require a commercial license to use this material and do not have one, then return this material, unopened to: Rockland Inc., P.O. BOX 5199, Limerick, Pennsylvania, USA.