

**Datasheet for 600-401-FJ3****TMEM204 Antibody****Overview**

<b>Description:</b>	Anti-TMEM204 (RABBIT) Antibody - 600-401-FJ3
<b>Item No.:</b>	600-401-FJ3
<b>Size:</b>	100 µg
<b>Applications:</b>	ELISA, IF, IHC, WB
<b>Reactivity:</b>	Human, Mouse, Rat
<b>Host Species:</b>	Rabbit

**Product Details**

<b>Background:</b>	Transmembrane protein 204 (TMEM204) is a four-transmembrane protein that is induced under hypoxic conditions. It localizes to cell-cell junctions and co-localizes with the beta-catenin adherens junction-associated protein, but not with tight junctions. Overexpression of TMEM204 results in decreased adhesion between cells, indicating that TMEM204 is an adherens junction protein that modulates cell adhesion and potentially angiogenesis. Recent evidence suggests TMEM204 may also be involved in epilepsy.
<b>Synonyms:</b>	TMEM204 Antibody, CLP24, C16orf30, CLP24, UNQ6509/PRO21434, Transmembrane protein 204, Claudin-like protein 24
<b>Host Species:</b>	Rabbit
<b>Clonality:</b>	Polyclonal
<b>Format:</b>	IgG

**Target Details**

<b>Gene Name:</b>	TMEM204
<b>Reactivity:</b>	Human, Mouse, Rat
<b>Immunogen Type:</b>	Conjugated Peptide
<b>Immunogen:</b>	Anti-TMEM204 antibody was prepared from whole rabbit serum produced by repeated immunizations with a 17 amino acid synthetic peptide near the C-terminus of human TMEM204.

**Purity/Specificity:** Anti-TMEM204 Antibody was affinity purified from monospecific antiserum by immunoaffinity chromatography. At least two isoforms of TMEM204 are known to exist; this antibody will recognize both isoforms.

**Relevant Links:**

- [UniProtKB - Q9BSN7](#)
- [GeneID - 79652](#)
- [NCBI - NP\\_001243470.1](#)

## Application Details

**Tested Applications:** ELISA, IF, IHC, WB

**Application Note:** Anti-TMEM204 Antibody has been tested for use in ELISA, Western Blotting, Immunohistochemistry and Immunofluorescence. Specific conditions for reactivity should be optimized by the end user. Expect a band at approximately 25 kDa in Western Blots of specific cell lysates and tissues.

**Assay Dilutions:** All assays should be optimized by the user. Recommended dilutions (if any) may be listed below.

**ELISA:** 1:10,000

**IF:** 20 µg/mL

**IHC:** 5 µg/mL

**WB:** 1 µg/mL

## Formulation

**Physical State:** Liquid (sterile filtered)

**Concentration:** 1 mg/mL by UV absorbance at 280 nm

**Buffer:** 0.01 M Sodium Phosphate, 0.25 M Sodium Chloride, pH 7.2

**Preservative:** 0.02% (w/v) Sodium Azide

**Stabilizer:** None

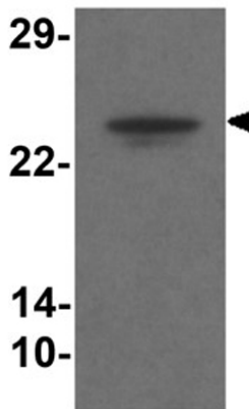
## Shipping & Handling

**Shipping Condition:** Dry Ice

**Storage Condition:** Store vial at -20° C prior to opening. Aliquot contents and freeze at -20° C or below for extended storage. Avoid cycles of freezing and thawing. Centrifuge product if not completely clear after standing at room temperature. This product is stable for several weeks at 4° C as an undiluted liquid. Dilute only prior to immediate use.

**Expiration:** Expiration date is one (1) year from date of receipt.

## Images

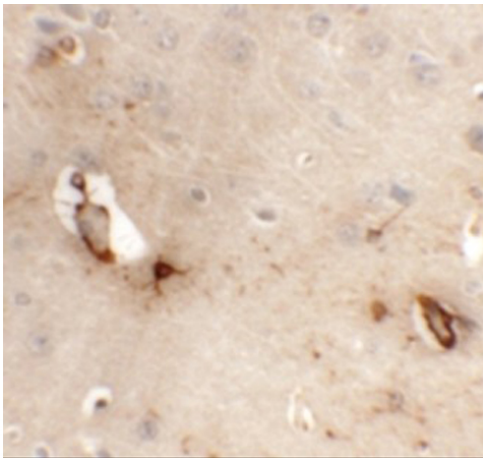


### Western Blot

Western blot analysis of TMEM204.

Load: human brain tissue lysate.

Primary Antibody: TMEM204 antibody at 1 µg/mL.

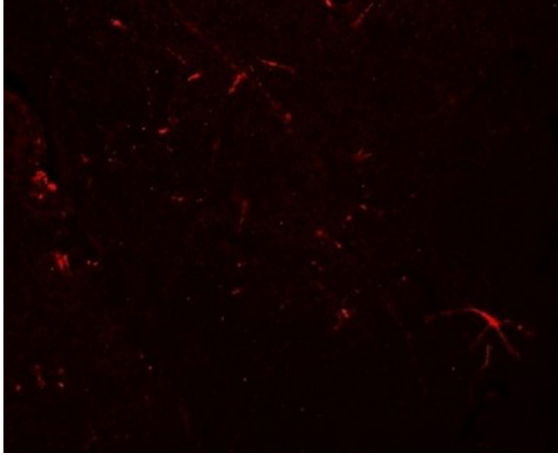


### Immunohistochemistry

Immunohistochemistry of TMEM204.

Tissue: mouse brain tissue.

Primary Antibody: TMEM204 antibody at 5 µg/mL.

**Immunofluorescence Microscopy**

Immunofluorescence of TMEM204.

Tissue: mouse brain tissue.

Primary Antibody: TMEM204 antibody at 20 µg/mL.

**Disclaimer**

This product is for research use only and is not intended for therapeutic or diagnostic applications. Please contact a technical service representative for more information. All products of animal origin manufactured by Rockland Immunochemicals are derived from starting materials of North American origin. Collection was performed in United States Department of Agriculture (USDA) inspected facilities and all materials have been inspected and certified to be free of disease and suitable for exportation. All properties listed are typical characteristics and are not specifications. All suggestions and data are offered in good faith but without guarantee as conditions and methods of use of our products are beyond our control. All claims must be made within 30 days following the date of delivery. The prospective user must determine the suitability of our materials before adopting them on a commercial scale. Suggested uses of our products are not recommendations to use our products in violation of any patent or as a license under any patent of Rockland Immunochemicals, Inc. If you require a commercial license to use this material and do not have one, then return this material, unopened to: Rockland Inc., P.O. BOX 5199, Limerick, Pennsylvania, USA.