

Datasheet for 600-401-FJ2**TMEM192 Antibody****Overview**

Description:	Anti-TMEM192 (RABBIT) Antibody - 600-401-FJ2
Item No.:	600-401-FJ2
Size:	100 µg
Applications:	ELISA, IF, IHC, WB
Reactivity:	Human, Mouse, Rat
Host Species:	Rabbit

Product Details

Background:	TMEM192 is a widely expressed, four transmembrane protein that localizes to late endosomal/lysosomal membranes. This localization is mediated by two dileucine motifs present at the amino-terminus of TMEM192. A cysteine residue near the carboxy residue is responsible for disulfide bond formation in TMEM192 homodimers. Little is known about the function of this protein.
Synonyms:	TMEM192 Antibody, Transmembrane protein 192
Host Species:	Rabbit
Clonality:	Polyclonal
Format:	IgG

Target Details

Gene Name:	TMEM192
Reactivity:	Human, Mouse, Rat
Immunogen Type:	Conjugated Peptide
Immunogen:	Anti-TMEM192 antibody was prepared from whole rabbit serum produced by repeated immunizations with a 17 amino acid synthetic peptide near the C-terminus of human TMEM192.
Purity/Specificity:	Anti-TMEM192 Antibody was affinity purified from monospecific antiserum by immunoaffinity chromatography. At least two isoforms of TMEM192 are known to exist; this antibody will recognize both. TMEM192 antibody is predicted to not cross-react with other TMEM proteins.

Relevant Links:	<ul style="list-style-type: none">• UniProtKB - Q8IY95• GeneID - 201931• NCBI - NP_001093859.1
------------------------	--

Application Details

Tested Applications:	ELISA, IF, IHC, WB
Application Note:	Anti-TMEM192 Antibody has been tested for use in ELISA, Western Blotting, Immunohistochemistry and Immunofluorescence. Specific conditions for reactivity should be optimized by the end user. Expect a band at approximately 31 kDa in Western Blots of specific cell lysates and tissues.
Assay Dilutions:	All assays should be optimized by the user. Recommended dilutions (if any) may be listed below.
ELISA:	1:5000 - 1:10000
IF:	20 µg/mL
IHC:	5 µg/mL
WB:	0.5-1 µg/mL

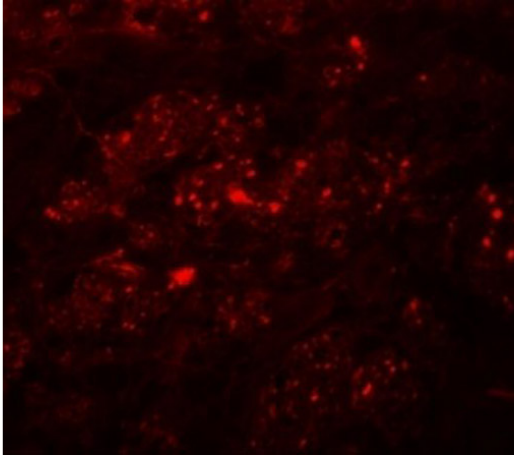
Formulation

Physical State:	Liquid (sterile filtered)
Concentration:	1.0 mg/mL by UV absorbance at 280 nm
Buffer:	0.01 M Sodium Phosphate, 0.25 M Sodium Chloride, pH 7.2
Preservative:	0.02% (w/v) Sodium Azide
Stabilizer:	None

Shipping & Handling

Shipping Condition:	Wet Ice
Storage Condition:	Antibody can be stored at 4°C up to one year. Antibodies should not be exposed to prolonged high temperatures.
Expiration:	Expiration date is one (1) year from date of receipt.

Images

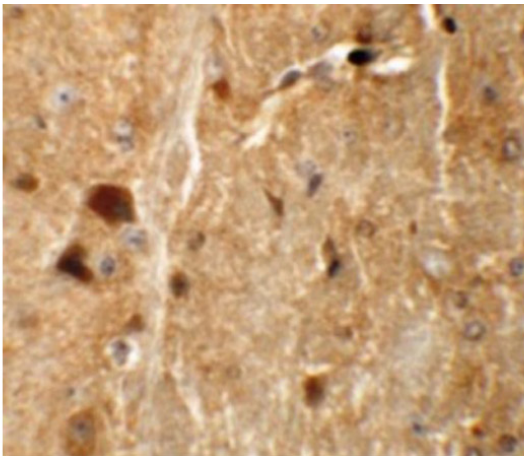


Immunofluorescence Microscopy

Immunofluorescence of TMEM192.

Tissue: mouse brain tissue.

Primary Antibody: TMEM192 antibody at 20 $\mu\text{g}/\text{mL}$.

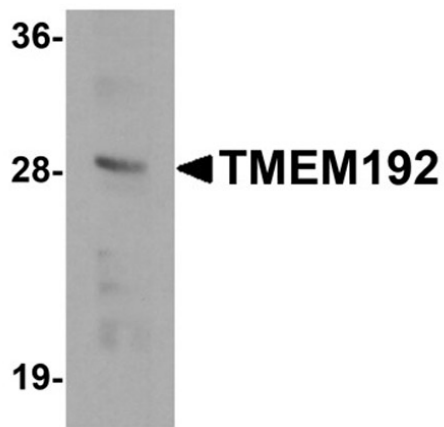


Immunohistochemistry

Immunohistochemistry of TMEM192.

Tissue: mouse brain tissue.

Primary Antibody: TMEM192 antibody at 5 $\mu\text{g}/\text{mL}$.



Western Blot

Western blot analysis of TMEM192.

Load: SK-N-SH cell lysate.

Primary Antibody: TMEM192 antibody at 0.5 $\mu\text{g}/\text{mL}$.

Disclaimer

This product is for research use only and is not intended for therapeutic or diagnostic applications. Please contact a technical service representative for more information. All products of animal origin manufactured by Rockland Immunochemicals are derived from starting materials of North American origin. Collection was performed in United States Department of Agriculture (USDA) inspected facilities and all materials have been inspected and certified to be free of disease and suitable for exportation. All properties listed are typical characteristics and are not specifications. All suggestions and data are offered in good faith but without guarantee as conditions and methods of use of our products are beyond our control. All claims must be made within 30 days following the date of delivery. The prospective user must determine the suitability of our materials before adopting them on a commercial scale. Suggested uses of our products are not recommendations to use our products in violation of any patent or as a license under any patent of Rockland Immunochemicals, Inc. If you require a commercial license to use this material and do not have one, then return this material, unopened to: Rockland Inc., P.O. BOX 5199, Limerick, Pennsylvania, USA.