

Datasheet for 600-401-FH6**TMEM16A Antibody****Overview**

Description:	Anti-TMEM16A (RABBIT) Antibody - 600-401-FH6
Item No.:	600-401-FH6
Size:	100 µg
Applications:	ELISA, WB
Reactivity:	Human, Mouse
Host Species:	Rabbit

Product Details

Background:	Calcium-activated chloride channels (CaCC) are present in many cell types and mediate physiological functions such as epithelial secretion, sensory signal transduction, and smooth muscle contraction. Subunits of these CaCC's include the transmembrane proteins TMEM16A and TMEM16B. TMEM16A is expressed in epithelial cells of the kidney and lung, pancreas, and sensory neurons and its mRNA is seen in foregut, airway epithelia, and tracheal smooth muscle; mice lacking TMEM16A fail to survive past ten days and show aerophagia and little weight gain. TMEM16A is also overexpressed or amplified in multiple cancers associated with poor survival such as oral cancers and gastrointestinal stromal tumors, suggesting the development of CaCC modulators may be a viable therapeutic strategy.
Synonyms:	TMEM16A Antibody, DOG1, TAOS2, ORAOV2, Anoctamin-1, Discovered on gastrointestinal stromal tumors protein 1, Oral cancer overexpressed protein 2, Transmembrane protein 16A, Tumor-amplified and overexpressed sequence 2
Host Species:	Rabbit
Clonality:	Polyclonal
Format:	IgG

Target Details

Gene Name:	ANO1
Reactivity:	Human, Mouse
Immunogen Type:	Conjugated Peptide

Immunogen:	Anti-TMEM16A antibody was prepared from whole rabbit serum produced by repeated immunizations with a 17 amino acid synthetic peptide from near the N-terminus of human TMEM16A.
Purity/Specificity:	Anti-TMEM16A Antibody was affinity purified from monospecific antiserum by immunoaffinity chromatography. Cross reactivity with TMEM16A from other sources has not been determined.
Relevant Links:	<ul style="list-style-type: none">• UniProtKB - Q5XXA6• GeneID - 55107• NCBI - NP_060513.5

Application Details

Tested Applications:	ELISA, WB
Application Note:	Anti-TMEM16A Antibody has been tested for use in ELISA and Western Blotting. Specific conditions for reactivity should be optimized by the end user. Expect a band at approximately 114 kDa in Western Blots of specific cell lysates and tissues.
Assay Dilutions:	All assays should be optimized by the user. Recommended dilutions (if any) may be listed below.
ELISA:	1:10,000
WB:	1 µg/mL

Formulation

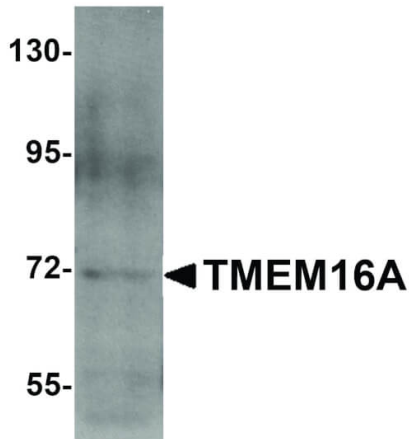
Physical State:	Liquid (sterile filtered)
Concentration:	1.0 mg/mL by UV absorbance at 280 nm
Buffer:	0.01 M Sodium Phosphate, 0.25 M Sodium Chloride, pH 7.2
Preservative:	0.02% (w/v) Sodium Azide
Stabilizer:	None

Shipping & Handling

Shipping Condition:	Dry Ice
Storage Condition:	Store vial at -20° C prior to opening. Aliquot contents and freeze at -20° C or below for extended storage. Avoid cycles of freezing and thawing. Centrifuge product if not completely clear after standing at room temperature. This product is stable for several weeks at 4° C as an undiluted liquid. Dilute only prior to immediate use.

Expiration: Expiration date is one (1) year from date of receipt.

Images



Western Blot

Western Blot of TMEM16A antibody. Lane 1: A549 cell lysate. Primary Antibody: Anti-TMEM16A antibody at 1 µg/mL. Secondary antibody: Peroxidase rabbit secondary antibody at 1:10,000 for 45 min at RT. Block: 5% BLOTTO overnight at 4°C. Predicted/Observed size: 114 kDa, 72 kDa for TMEM16A. Other band(s): TMEM16A splice variants and isoforms.

Disclaimer

This product is for research use only and is not intended for therapeutic or diagnostic applications. Please contact a technical service representative for more information. All products of animal origin manufactured by Rockland Immunochemicals are derived from starting materials of North American origin. Collection was performed in United States Department of Agriculture (USDA) inspected facilities and all materials have been inspected and certified to be free of disease and suitable for exportation. All properties listed are typical characteristics and are not specifications. All suggestions and data are offered in good faith but without guarantee as conditions and methods of use of our products are beyond our control. All claims must be made within 30 days following the date of delivery. The prospective user must determine the suitability of our materials before adopting them on a commercial scale. Suggested uses of our products are not recommendations to use our products in violation of any patent or as a license under any patent of Rockland Immunochemicals, Inc. If you require a commercial license to use this material and do not have one, then return this material, unopened to: Rockland Inc., P.O. BOX 5199, Limerick, Pennsylvania, USA.