

Datasheet for 600-401-FH5**TMEM147 Antibody****Overview**

Description:	Anti-TMEM147 (RABBIT) Antibody - 600-401-FH5
Item No.:	600-401-FH5
Size:	100 µg
Applications:	ELISA, WB
Reactivity:	Human, Mouse, Rat
Host Species:	Rabbit

Product Details

Background:	TMEM147 is a recently identified protein that associates with Nicalin and NOMO, forming a complex that is thought to be similar to the gamma-secretase complex. TMEM147 localizes to the endoplasmic reticulum (ER), and in zebrafish, is expressed during early development. TMEM147 also interacts with the M3 muscarinic receptor (M3R) in the ER and is thought to negatively its expression and function.
Synonyms:	TMEM147 Antibody, NIFIE14, Transmembrane protein 147, Protein NIFIE 14
Host Species:	Rabbit
Clonality:	Polyclonal
Format:	IgG

Target Details

Gene Name:	TMEM147
Reactivity:	Human, Mouse, Rat
Immunogen Type:	Conjugated Peptide
Immunogen:	Anti-TMEM147 antibody was prepared from whole rabbit serum produced by repeated immunizations with a 13 amino acid synthetic peptide near the internal region of human TMEM147.
Purity/Specificity:	Anti-TMEM147 Antibody was affinity purified from monospecific antiserum by immunoaffinity chromatography. Cross reactivity with TMEM147 from other sources has not been determined.

Relevant Links:	<ul style="list-style-type: none">• UniProtKB - Q9BVK8• GeneID - 10430• NCBI - NP_001229526.1
------------------------	---

Application Details

Tested Applications:	ELISA, WB
Application Note:	Anti-TMEM147 Antibody has been tested for use in ELISA and Western Blotting. Specific conditions for reactivity should be optimized by the end user. Expect a band at approximately 25 kDa in Western Blots of specific cell lysates and tissues.
Assay Dilutions:	All assays should be optimized by the user. Recommended dilutions (if any) may be listed below.
ELISA:	1:10,000 - 1:20,000
WB:	1-2 µg/mL

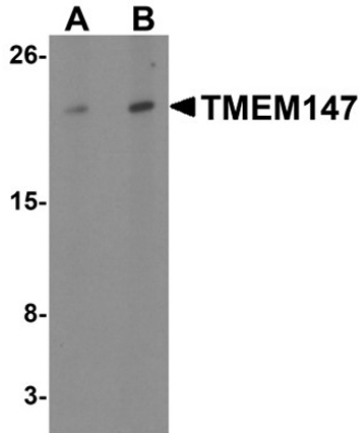
Formulation

Physical State:	Liquid (sterile filtered)
Concentration:	1 mg/mL by UV absorbance at 280 nm
Buffer:	0.01 M Sodium Phosphate, 0.25 M Sodium Chloride, pH 7.2
Preservative:	0.02% (w/v) Sodium Azide
Stabilizer:	None

Shipping & Handling

Shipping Condition:	Dry Ice
Storage Condition:	Store vial at -20° C prior to opening. Aliquot contents and freeze at -20° C or below for extended storage. Avoid cycles of freezing and thawing. Centrifuge product if not completely clear after standing at room temperature. This product is stable for several weeks at 4° C as an undiluted liquid. Dilute only prior to immediate use.
Expiration:	Expiration date is one (1) year from date of receipt.

Images

**Western Blot**

Western blot analysis of TMEM147. Load: Daudi cell lysate.
Primary Antibody: TMEM147 antibody at (A) 1 µg/mL and (B) 2 µg/mL.

Disclaimer

This product is for research use only and is not intended for therapeutic or diagnostic applications. Please contact a technical service representative for more information. All products of animal origin manufactured by Rockland Immunochemicals are derived from starting materials of North American origin. Collection was performed in United States Department of Agriculture (USDA) inspected facilities and all materials have been inspected and certified to be free of disease and suitable for exportation. All properties listed are typical characteristics and are not specifications. All suggestions and data are offered in good faith but without guarantee as conditions and methods of use of our products are beyond our control. All claims must be made within 30 days following the date of delivery. The prospective user must determine the suitability of our materials before adopting them on a commercial scale. Suggested uses of our products are not recommendations to use our products in violation of any patent or as a license under any patent of Rockland Immunochemicals, Inc. If you require a commercial license to use this material and do not have one, then return this material, unopened to: Rockland Inc., P.O. BOX 5199, Limerick, Pennsylvania, USA.