

Datasheet for 600-401-FH4**TMEM135 Antibody****Overview**

Description:	Anti-TMEM135 (RABBIT) Antibody - 600-401-FH4
Item No.:	600-401-FH4
Size:	100 µg
Applications:	ELISA, IF, IHC, WB
Reactivity:	Human, Mouse, Rat
Host Species:	Rabbit

Product Details

Background:	The transmembrane protein 135 (TMEM135), also known as peroxisomal membrane protein 52 (PMP52), was initially identified as a protein that might be critical for adipogenesis and osteoblastogenesis. Further studies have indicated that TMEM135 may be part of a regulatory circuit that plays an important role in fat metabolism and energy expenditure in both <i>C. elegans</i> as well as mammalian organisms. Finally, recent experiments has suggested that TMEM135 may be an additional driver of breast cancer.
Synonyms:	TMEM135 Antibody, PMP52, Transmembrane protein 135, Peroxisomal membrane protein 52, PMP52
Host Species:	Rabbit
Clonality:	Polyclonal
Format:	IgG

Target Details

Gene Name:	TMEM135
Reactivity:	Human, Mouse, Rat
Immunogen Type:	Conjugated Peptide
Immunogen:	Anti-TMEM135 antibody was prepared from whole rabbit serum produced by repeated immunizations with a 16 amino acid peptide near the C-terminus of human TMEM135.

Purity/Specificity: Anti-TMEM135 Antibody was affinity purified from monospecific antiserum by immunoaffinity chromatography. At least two isoforms of TMEM135 are known to exist; this antibody will detect both isoforms.

Relevant Links:

- [UniProtKB - Q86UB9](#)
- [GeneID - 65084](#)
- [NCBI - NP_001162195.1](#)

Application Details

Tested Applications: ELISA, IF, IHC, WB

Application Note: Anti-TMEM135 Antibody has been tested for use in ELISA, Western Blotting, Immunohistochemistry and Immunofluorescence. Specific conditions for reactivity should be optimized by the end user. Expect a band at approximately 52 kDa in Western Blots of specific cell lysates and tissues.

Assay Dilutions: All assays should be optimized by the user. Recommended dilutions (if any) may be listed below.

ELISA: 1:10,000

IF: User Optimized

IHC: User Optimized

WB: 1 µg/mL

Formulation

Physical State: Liquid (sterile filtered)

Concentration: 1 mg/mL by UV absorbance at 280 nm

Buffer: 0.01 M Sodium Phosphate, 0.25 M Sodium Chloride, pH 7.2

Preservative: 0.02% (w/v) Sodium Azide

Stabilizer: None

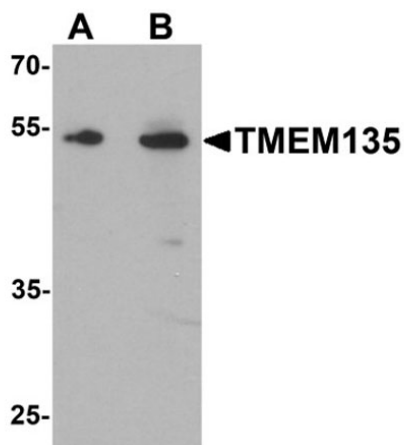
Shipping & Handling

Shipping Condition: Dry Ice

Storage Condition: Store vial at -20° C prior to opening. Aliquot contents and freeze at -20° C or below for extended storage. Avoid cycles of freezing and thawing. Centrifuge product if not completely clear after standing at room temperature. This product is stable for several weeks at 4° C as an undiluted liquid. Dilute only prior to immediate use.

Expiration: Expiration date is one (1) year from date of receipt.

Images

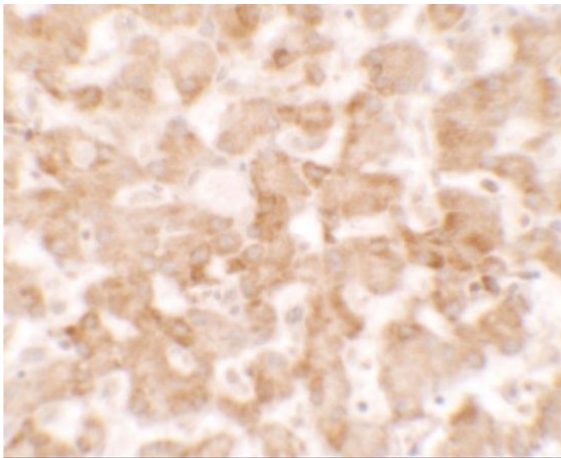


Western Blot

Western blot analysis of TMEM135.

Tissue: rat liver tissue lysate.

Primary Antibody: TMEM135 antibody at (A) 1 and (B) 2 $\mu\text{g/mL}$.

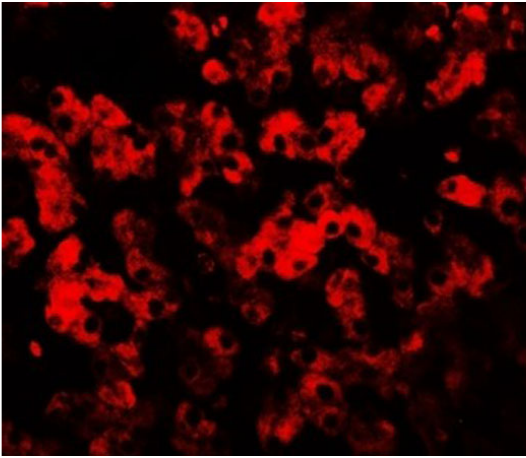


Immunohistochemistry

Immunohistochemistry of TMEM135.

Tissue: human liver tissue.

Primary Antibody: TMEM135 antibody at 2.5 $\mu\text{g/mL}$.

**Immunofluorescence Microscopy**

Immunofluorescence of TMEM135.

Tissue: human liver tissue.

Primary Antibody: TMEM135 antibody at 20 µg/mL.

Disclaimer

This product is for research use only and is not intended for therapeutic or diagnostic applications. Please contact a technical service representative for more information. All products of animal origin manufactured by Rockland Immunochemicals are derived from starting materials of North American origin. Collection was performed in United States Department of Agriculture (USDA) inspected facilities and all materials have been inspected and certified to be free of disease and suitable for exportation. All properties listed are typical characteristics and are not specifications. All suggestions and data are offered in good faith but without guarantee as conditions and methods of use of our products are beyond our control. All claims must be made within 30 days following the date of delivery. The prospective user must determine the suitability of our materials before adopting them on a commercial scale. Suggested uses of our products are not recommendations to use our products in violation of any patent or as a license under any patent of Rockland Immunochemicals, Inc. If you require a commercial license to use this material and do not have one, then return this material, unopened to: Rockland Inc., P.O. BOX 5199, Limerick, Pennsylvania, USA.