

Datasheet for 600-401-FH3**TMEM107 Antibody****Overview**

Description:	Anti-TMEM107 (RABBIT) Antibody - 600-401-FH3
Item No.:	600-401-FH3
Size:	100 µg
Applications:	ELISA, IF, IHC, WB
Reactivity:	Human
Host Species:	Rabbit

Product Details

Background:	Transmembrane protein 107 (TMEM 107) is critical for cilia formation and embryonic patterning (1). It is a 139 amino acid transmembrane protein encoded by a gene that maps to human chromosome 17 which is associated with two key tumor suppressor genes p53 and BRCA1 (1,2). TMEM107 is required for normal Sonic hedgehog (Shh) signaling in the neural tube and acts in combination with Gli2 and Gli3 to pattern ventral and intermediate neuronal cell types (1,3). TMEM107 is also a strong candidate gene for central areolar choroidal dystrophy (CACD) (1-3).
Synonyms:	TMEM107 Antibody , GRVS638, PRO1268, Transmembrane protein 107
Host Species:	Rabbit
Clonality:	Polyclonal
Format:	IgG

Target Details

Gene Name:	TMEM107
Reactivity:	Human
Immunogen Type:	Conjugated Peptide
Immunogen:	Anti-TMEM107 antibody was prepared from whole rabbit serum produced by repeated immunizations with a 19 amino acid peptide near the N-terminus of human TMEM107.

Purity/Specificity: Anti-TMEM107 Antibody was affinity purified from monospecific antiserum by immunoaffinity chromatography. TMEM107 antibody is human specific. At least two isoforms of TMEM107 are known to exist.

Relevant Links:

- [UniProtKB - Q6UX40](#)
- [GeneID - 84314](#)
- [NCBI - NP_115730.2](#)

Application Details

Tested Applications: ELISA, IF, IHC, WB

Application Note: Anti-TMEM107 Antibody has been tested for use in ELISA, Western Blotting, Immunohistochemistry and Immunofluorescence. Specific conditions for reactivity should be optimized by the end user. Expect a band at approximately 16 kDa in Western Blots of specific cell lysates and tissues.

Assay Dilutions: All assays should be optimized by the user. Recommended dilutions (if any) may be listed below.

ELISA: User Optimized

IF: User Optimized

IHC: User Optimized

WB: User Optimized

Formulation

Physical State: Liquid (sterile filtered)

Concentration: 1 mg/mL by UV absorbance at 280 nm

Buffer: 0.01 M Sodium Phosphate, 0.25 M Sodium Chloride, pH 7.2

Preservative: 0.02% (w/v) Sodium Azide

Stabilizer: None

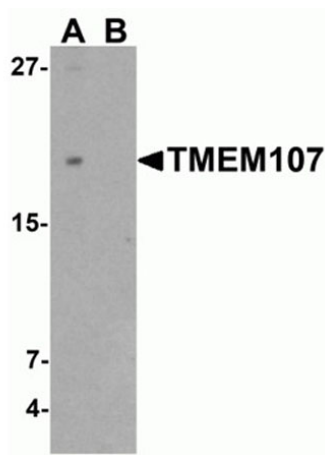
Shipping & Handling

Shipping Condition: Dry Ice

Storage Condition: Store vial at -20° C prior to opening. Aliquot contents and freeze at -20° C or below for extended storage. Avoid cycles of freezing and thawing. Centrifuge product if not completely clear after standing at room temperature. This product is stable for several weeks at 4° C as an undiluted liquid. Dilute only prior to immediate use.

Expiration: Expiration date is one (1) year from date of receipt.

Images

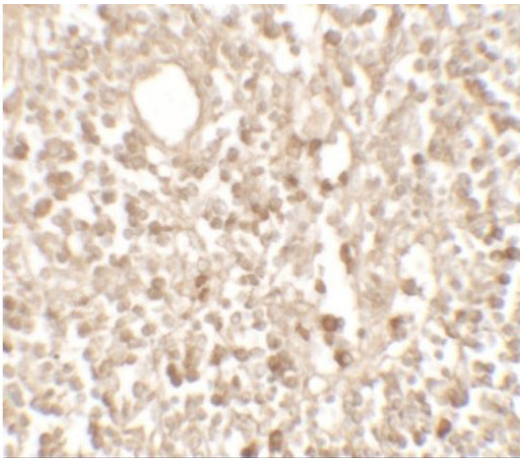


Western Blot

Western blot of TMEM107.

Load: THP-1 cell lysate.

Primary Antibody: TMEM107 antibody at 1 µg/ml in (A) the absence and (B) the presence of blocking peptide.

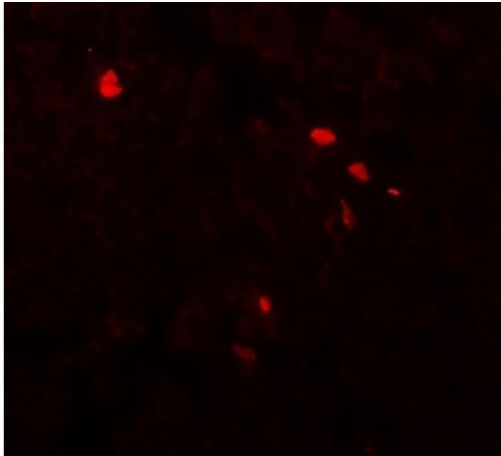


Immunohistochemistry

Immunohistochemistry of TMEM107.

Tissue: human lymph node tissue.

Primary Antibody: TMEM107 antibody at 5 µg/mL.

**Immunofluorescence Microscopy**

Immunofluorescence of TMEM107.

Tissue: human lymph node tissue.

Primary Antibody: TMEM107 antibody at 20 µg/mL.

Disclaimer

This product is for research use only and is not intended for therapeutic or diagnostic applications. Please contact a technical service representative for more information. All products of animal origin manufactured by Rockland Immunochemicals are derived from starting materials of North American origin. Collection was performed in United States Department of Agriculture (USDA) inspected facilities and all materials have been inspected and certified to be free of disease and suitable for exportation. All properties listed are typical characteristics and are not specifications. All suggestions and data are offered in good faith but without guarantee as conditions and methods of use of our products are beyond our control. All claims must be made within 30 days following the date of delivery. The prospective user must determine the suitability of our materials before adopting them on a commercial scale. Suggested uses of our products are not recommendations to use our products in violation of any patent or as a license under any patent of Rockland Immunochemicals, Inc. If you require a commercial license to use this material and do not have one, then return this material, unopened to: Rockland Inc., P.O. BOX 5199, Limerick, Pennsylvania, USA.