

Datasheet for 600-401-FG8**TLX2 Antibody****Overview**

Description:	Anti-TLX2 (RABBIT) Antibody - 600-401-FG8
Item No.:	600-401-FG8
Size:	100 µg
Applications:	ELISA, IF, IHC, WB
Reactivity:	Human, Mouse, Rat
Host Species:	Rabbit

Product Details

Background:	The Hox proteins play a role in patterns of embryonic development and cellular differentiation by regulating downstream target genes. TLX2, also known as homeobox11-like 1 (HOX11L1), is a DNA-binding nuclear transcription factor that appears to be crucial for the development of the peripheral nervous system. TLX2 is a downstream target of regulation by both PHOX2A and PHOX2B proteins during intestinal neuronal differentiation. In humans, loss-of-function of TLX2 may play a role in tumorigenesis of gastrointestinal stromal tumors.
Synonyms:	TLX2 Antibody, NCX, HOX11L1, NCX, T-cell leukemia homeobox protein 2, Homeobox protein Hox-11L1
Host Species:	Rabbit
Clonality:	Polyclonal
Format:	IgG

Target Details

Gene Name:	TLX2
Reactivity:	Human, Mouse, Rat
Immunogen Type:	Conjugated Peptide
Immunogen:	Anti-TLX2 antibody was prepared from whole rabbit serum produced by repeated immunizations with an 18 amino acid peptide near the N-terminus of human TLX2.

Purity/Specificity: Anti-TLX2 Antibody was affinity purified from monospecific antiserum by immunoaffinity chromatography. TLX2 antibody is predicted to not cross-react with other TLX proteins.

Relevant Links:

- [UniProtKB - O43763](#)
- [GeneID - 3196](#)
- [NCBI - NP_057254.1](#)

Application Details

Tested Applications: ELISA, IF, IHC, WB

Application Note: Anti-TLX2 Antibody has been tested for use in ELISA, Western Blotting, Immunohistochemistry and Immunofluorescence. Specific conditions for reactivity should be optimized by the end user. Expect a band at approximately 30 kDa in Western Blots of specific cell lysates and tissues.

Assay Dilutions: All assays should be optimized by the user. Recommended dilutions (if any) may be listed below.

ELISA: 1:5000 - 1:10000

IF: User Optimized

IHC: User Optimized

WB: 0.5-1 µg/mL

Formulation

Physical State: Liquid (sterile filtered)

Concentration: 1 mg/mL by UV absorbance at 280 nm

Buffer: 0.01 M Sodium Phosphate, 0.25 M Sodium Chloride, pH 7.2

Preservative: 0.02% (w/v) Sodium Azide

Stabilizer: None

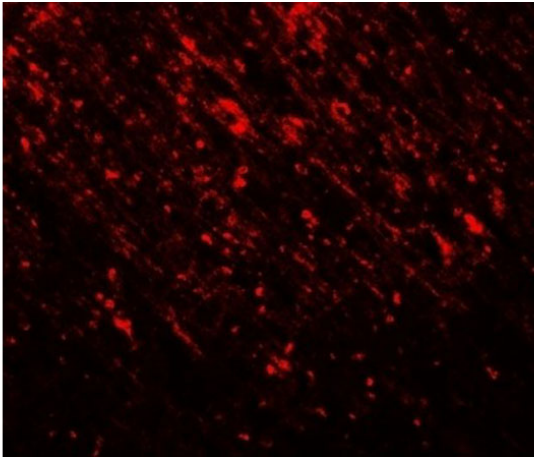
Shipping & Handling

Shipping Condition: Dry Ice

Storage Condition: Store vial at -20° C prior to opening. Aliquot contents and freeze at -20° C or below for extended storage. Avoid cycles of freezing and thawing. Centrifuge product if not completely clear after standing at room temperature. This product is stable for several weeks at 4° C as an undiluted liquid. Dilute only prior to immediate use.

Expiration: Expiration date is one (1) year from date of receipt.

Images

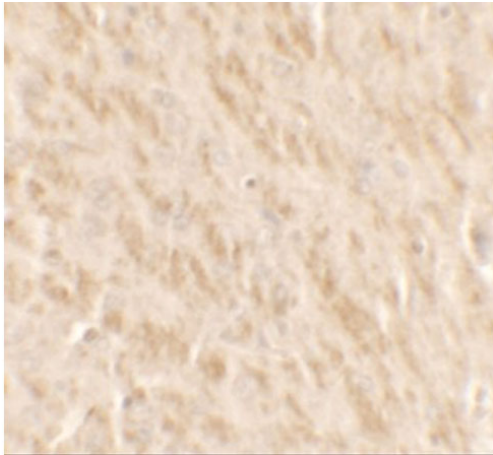


Immunofluorescence Microscopy

Immunofluorescence of TLX2.

Tissue: rat brain tissue.

Primary Antibody: TLX2 antibody at 20 µg/mL.

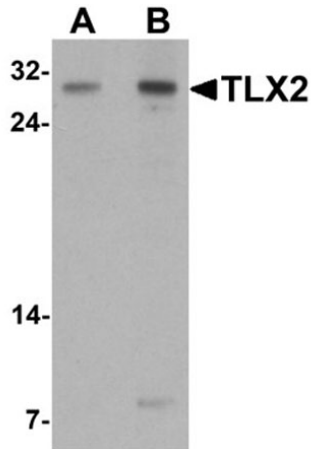


Immunohistochemistry

Immunohistochemistry of TLX2.

Tissue: rat brain tissue.

Primary Antibody: TLX2 antibody at 2.5 µg/mL.

**Western Blot**

Western blot of TLX2.

Load: rat brain tissue lysate.

Primary Antibody: TLX2 antibody at (A) 0.5 and (B) 1 µg/mL.

Disclaimer

This product is for research use only and is not intended for therapeutic or diagnostic applications. Please contact a technical service representative for more information. All products of animal origin manufactured by Rockland Immunochemicals are derived from starting materials of North American origin. Collection was performed in United States Department of Agriculture (USDA) inspected facilities and all materials have been inspected and certified to be free of disease and suitable for exportation. All properties listed are typical characteristics and are not specifications. All suggestions and data are offered in good faith but without guarantee as conditions and methods of use of our products are beyond our control. All claims must be made within 30 days following the date of delivery. The prospective user must determine the suitability of our materials before adopting them on a commercial scale. Suggested uses of our products are not recommendations to use our products in violation of any patent or as a license under any patent of Rockland Immunochemicals, Inc. If you require a commercial license to use this material and do not have one, then return this material, unopened to: Rockland Inc., P.O. BOX 5199, Limerick, Pennsylvania, USA.