

Datasheet for 600-401-FG0**TLR4 Antibody****Overview**

Description:	Anti-TLR4 (RABBIT) Antibody - 600-401-FG0
Item No.:	600-401-FG0
Size:	100 µg
Applications:	ELISA, IHC
Reactivity:	Human
Host Species:	Rabbit

Product Details

Background:	Toll-like receptors (TLRs) are signaling molecules that recognize different microbial products during infection and serve as an important link between the innate and adaptive immune responses. These proteins act through adaptor molecules such as MyD88 and TIRAP to activate various kinases and transcription factors such as Protein Kinase C (PKC) alpha/beta and NF-kB. Studies with TLR4-deficient mice indicate that the main ligand for TLR is lipopolysaccharide. Consequently, these mice also showed increased susceptibility to Gram-negative sepsis.
Synonyms:	TLR4 Antibody, TOLL, CD284, TLR-4, ARMD10, Toll-like receptor 4, hToll
Host Species:	Rabbit
Clonality:	Polyclonal
Format:	IgG

Target Details

Gene Name:	TLR4
Reactivity:	Human
Immunogen Type:	Conjugated Peptide
Immunogen:	Anti-TLR4 antibody was prepared from whole rabbit serum produced by repeated immunizations with a 14 amino acid synthetic peptide near the C-terminus of human TLR4.

Purity/Specificity: Anti-TLR4 Antibody was affinity purified from monospecific antiserum by immunoaffinity chromatography. TLR4 antibody is predicted to not cross-react with other TLR protein family members.

Relevant Links:

- [UniProtKB - O00206](#)
- [GeneID - 7099](#)
- [NCBI - NP_003257.1](#)

Application Details

Tested Applications: ELISA, IHC

Application Note: Anti-TLR4 Antibody has been tested for use in ELISA and Immunohistochemistry. Specific conditions for reactivity should be optimized by the end user. Expect a band at approximately 96 kDa in Western Blots of specific cell lysates and tissues.

Assay Dilutions: All assays should be optimized by the user. Recommended dilutions (if any) may be listed below.

ELISA: User Optimized

IHC: 5 µg/mL

Formulation

Physical State: Liquid (sterile filtered)

Concentration: 1 mg/mL by UV absorbance at 280 nm

Buffer: 0.01 M Sodium Phosphate, 0.25 M Sodium Chloride, pH 7.2

Preservative: 0.02% (w/v) Sodium Azide

Stabilizer: None

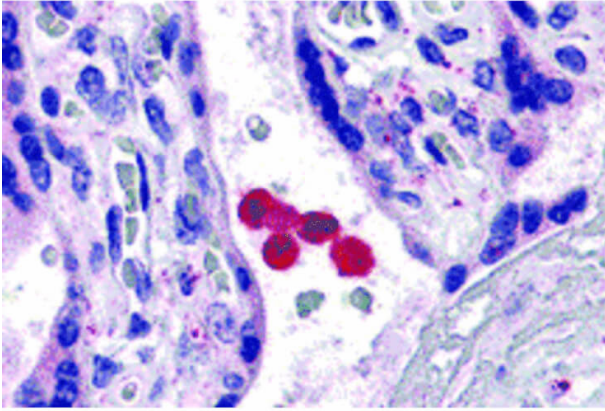
Shipping & Handling

Shipping Condition: Dry Ice

Storage Condition: Store vial at -20° C prior to opening. Aliquot contents and freeze at -20° C or below for extended storage. Avoid cycles of freezing and thawing. Centrifuge product if not completely clear after standing at room temperature. This product is stable for several weeks at 4° C as an undiluted liquid. Dilute only prior to immediate use.

Expiration: Expiration date is one (1) year from date of receipt.

Images



Immunohistochemistry

Immunohistochemistry of TLR4 antibody. Tissue: human placenta tissue. Fixation: formalin fixed paraffin embedded. Antigen retrieval: not required. Primary antibody: TLR4 antibody at 5 µg/mL for 1 h at RT. Secondary antibody: Peroxidase rabbit secondary antibody at 1:10,000 for 45 min at RT. Localization: TLR4 is located in the cytoplasm, cell membrane, golgi apparatus, endoplasmic reticulum, and the endosome membrane. Staining: TLR4 is stained with hematoxylin purple nuclear counterstain.

Disclaimer

This product is for research use only and is not intended for therapeutic or diagnostic applications. Please contact a technical service representative for more information. All products of animal origin manufactured by Rockland Immunochemicals are derived from starting materials of North American origin. Collection was performed in United States Department of Agriculture (USDA) inspected facilities and all materials have been inspected and certified to be free of disease and suitable for exportation. All properties listed are typical characteristics and are not specifications. All suggestions and data are offered in good faith but without guarantee as conditions and methods of use of our products are beyond our control. All claims must be made within 30 days following the date of delivery. The prospective user must determine the suitability of our materials before adopting them on a commercial scale. Suggested uses of our products are not recommendations to use our products in violation of any patent or as a license under any patent of Rockland Immunochemicals, Inc. If you require a commercial license to use this material and do not have one, then return this material, unopened to: Rockland Inc., P.O. BOX 5199, Limerick, Pennsylvania, USA.