

Datasheet for 600-401-FF2**TIP47 Antibody****Overview**

Description:	Anti-TIP47 (RABBIT) Antibody - 600-401-FF2
Item No.:	600-401-FF2
Size:	100 µg
Applications:	ELISA, IHC, WB
Reactivity:	Human, Mouse, Rat
Host Species:	Rabbit

Product Details

Background:	Tail-interacting protein (TIP47) is a cytosolic protein essential for the transport of mannose-6-phosphate receptors (MPRs) from endosomes to the trans-Golgi compartments in cells. TIP47 is recruited from the cytoplasm to the late endosomal surface by the Ras-associated protein Rab9 GTPase, enabling it to bind more efficiently to MPR cytoplasmic domains. Recently, it was shown that TIP47 regulates the expression of Rab9, as expression of siRNA to TIP47 in transfected cells dramatically decreased the half-life of the Rab9 protein in addition to stabilizing the subcellular localization of Rab9. At least two isoforms of TIP47 are known to exist.
Synonyms:	TIP47 Antibody, PP17, 47 kDa mannose 6-phosphate receptor-binding protein, 47 kDa MPR-binding protein, Perilipin-3, Cargo selection protein TIP47, Mannose-6-phosphate receptor-binding protein 1, Placental protein 17, PLIN3, M6PRBP1
Host Species:	Rabbit
Clonality:	Polyclonal
Format:	IgG

Target Details

Gene Name:	PLIN3
Reactivity:	Human, Mouse, Rat
Immunogen Type:	Conjugated Peptide

Immunogen:	Anti-TIP47 antibody was prepared from whole rabbit serum produced by repeated immunizations with a 14 amino acid synthetic peptide from near the N-terminus of human TIP47.
Purity/Specificity:	Anti-TIP47 Antibody was affinity purified from monospecific antiserum by immunoaffinity chromatography. Cross reactivity with TIP47 from other sources has not been determined.
Relevant Links:	<ul style="list-style-type: none">• UniProtKB - Q96D42• GeneID - 26762• NCBI - NP_036338

Application Details

Tested Applications:	ELISA, IHC, WB
Application Note:	Anti-TIP47 Antibody has been tested for use in ELISA, Western Blotting, and Immunohistochemistry. Specific conditions for reactivity should be optimized by the end user. Expect a band at approximately 47 kDa in Western Blots of specific cell lysates and tissues.
Assay Dilutions:	All assays should be optimized by the user. Recommended dilutions (if any) may be listed below.
ELISA:	1:5000 - 1:10000
IHC:	2 µg/mL
WB:	0.5-1 µg/mL

Formulation

Physical State:	Liquid (sterile filtered)
Concentration:	1 mg/mL by UV absorbance at 280 nm
Buffer:	0.01 M Sodium Phosphate, 0.25 M Sodium Chloride, pH 7.2
Preservative:	0.02% (w/v) Sodium Azide
Stabilizer:	None

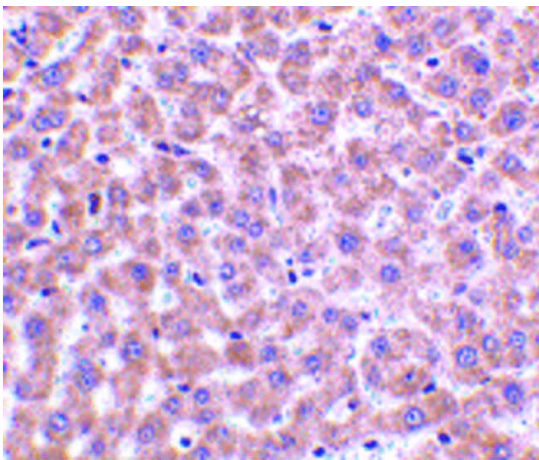
Shipping & Handling

Shipping Condition:	Dry Ice
----------------------------	---------

Storage Condition: Store vial at -20° C prior to opening. Aliquot contents and freeze at -20° C or below for extended storage. Avoid cycles of freezing and thawing. Centrifuge product if not completely clear after standing at room temperature. This product is stable for several weeks at 4° C as an undiluted liquid. Dilute only prior to immediate use.

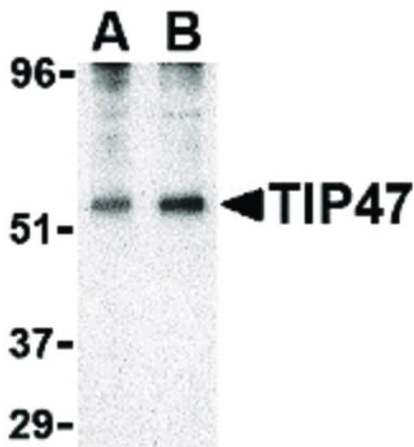
Expiration: Expiration date is one (1) year from date of receipt.

Images



Immunohistochemistry

Immunohistochemistry of TIP47 antibody. Tissue: rat liver tissue. Fixation: formalin fixed paraffin embedded. Antigen retrieval: not required. Primary antibody: TIP47 antibody at 2 µg/mL for 1 h at RT. Secondary antibody: Peroxidase rabbit secondary antibody at 1:10,000 for 45 min at RT. Localization: TIP47 is located in the cell membrane. Staining: TIP47 is stained with hematoxylin purple nuclear counterstain.



Western Blot

Western Blot of TIP47 antibody in EL4 cell lysate. Lane A: TIP47 antibody at 0.5 µg/mL. Lane B: TIP47 antibody at 1 µg/mL. Load: 35 µg per lane. Primary antibody: TIP47 antibody at designated concentrations for overnight at 4°C. Secondary antibody: Peroxidase rabbit secondary antibody at 1:10,000 for 45 min at RT. Block: 5% BLOTTO overnight at 4°C. Predicted/Observed size: 39 kDa, 54 kDa for TIP47. Other band(s): TIP47 splice variants and isoforms.

Disclaimer

This product is for research use only and is not intended for therapeutic or diagnostic applications. Please contact a technical service representative for more information. All products of animal origin manufactured by Rockland Immunochemicals are derived from starting materials of North American origin. Collection was performed in United States Department of Agriculture (USDA) inspected facilities and all materials have been inspected and certified to be free of disease and suitable for exportation. All properties listed are typical characteristics and are not specifications. All suggestions and data are offered in good faith but without guarantee as conditions and methods of use of our products are beyond our control. All claims must be made within 30 days following the date of delivery. The prospective user must determine the suitability of our materials before adopting them on a commercial scale. Suggested uses of our products are not recommendations to use our products in violation of any patent or as a license under any patent of Rockland Immunochemicals, Inc. If you require a commercial license to use this material and do not have one, then return this material, unopened to: Rockland Inc., P.O. BOX 5199, Limerick, Pennsylvania, USA.