

Datasheet for 600-401-FC4**TEM7 Antibody****Overview**

Description:	Anti-TEM7 (RABBIT) Antibody - 600-401-FC4
Item No.:	600-401-FC4
Size:	100 µg
Applications:	ELISA, IF, IHC, WB
Reactivity:	Human, Mouse, Rat
Host Species:	Rabbit

Product Details

Background:	Tumor endothelial marker 7 (TEM7) was identified through serial analysis of gene expression on endothelial cells isolated from human normal and malignant colorectal tissues. Further experiments verified TEM7 was highly expressed in the endothelium of numerous other cancer types including breast, lung and brain tumors. At least four isoforms of TEM7 are known to exist; these include intracellular, secreted, and membrane-bound forms. A homologous protein, TEM7R (also known as PLXDC2), acts as a binding partner to TEM7 and is also abundantly expressed in the endothelium of malignant colorectal cancer but is absent or rare in normal colon mucosa. High expression of TEM7 is associated with metastasis and poor survival of patients with osteogenic sarcoma.
Synonyms:	TEM7 Antibody, TEM3, TEM7, TEM3, Plexin domain-containing protein 1, Tumor endothelial marker 3, Tumor endothelial marker 7, PLXDC1
Host Species:	Rabbit
Clonality:	Polyclonal
Format:	IgG

Target Details

Gene Name:	PLXDC1
Reactivity:	Human, Mouse, Rat
Immunogen Type:	Conjugated Peptide

Immunogen:	Anti-TEM7 antibody was prepared from whole rabbit serum produced by repeated immunizations with a 16 amino acid synthetic peptide from near the C-terminus of human TEM7.
Purity/Specificity:	Anti-TEM7 Antibody was affinity purified from monospecific antiserum by immunoaffinity chromatography. Cross reactivity with TEM7 from other sources has not been determined.
Relevant Links:	<ul style="list-style-type: none">• UniProtKB - Q8IUUK5• GeneID - 57125• NCBI - NP_065138.2

Application Details

Tested Applications:	ELISA, IF, IHC, WB
Application Note:	Anti-TEM7 Antibody has been tested for use in ELISA, Western Blotting, Immunohistochemistry and Immunofluorescence. Specific conditions for reactivity should be optimized by the end user. Expect a band at approximately 56 kDa in Western Blots of specific cell lysates and tissues.
Assay Dilutions:	All assays should be optimized by the user. Recommended dilutions (if any) may be listed below.
ELISA:	1:5000 - 1:20,000
IF:	20 µg/mL
IHC:	2.5 µg/mL
WB:	0.5-2 µg/mL

Formulation

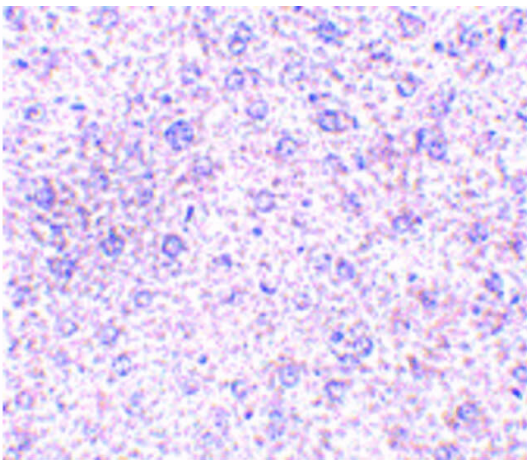
Physical State:	Liquid (sterile filtered)
Concentration:	1 mg/mL by UV absorbance at 280 nm
Buffer:	0.01 M Sodium Phosphate, 0.25 M Sodium Chloride, pH 7.2
Preservative:	0.02% (w/v) Sodium Azide
Stabilizer:	None

Shipping & Handling

Shipping Condition:	Dry Ice
----------------------------	---------

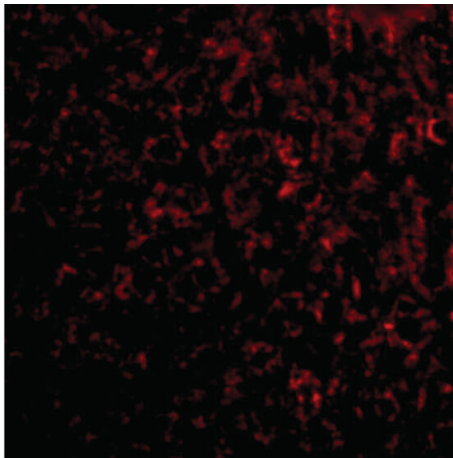
Storage Condition:	Store vial at -20° C prior to opening. Aliquot contents and freeze at -20° C or below for extended storage. Avoid cycles of freezing and thawing. Centrifuge product if not completely clear after standing at room temperature. This product is stable for several weeks at 4° C as an undiluted liquid. Dilute only prior to immediate use.
Expiration:	Expiration date is one (1) year from date of receipt.

Images



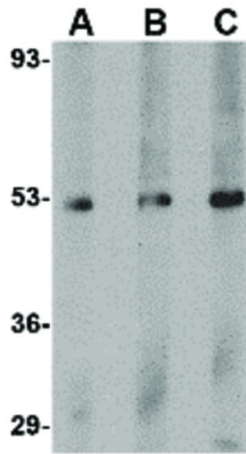
Immunohistochemistry

Immunohistochemistry of TEM7 antibody. Tissue: Mouse liver tissue. Fixation: formalin fixed paraffin embedded. Antigen retrieval: not required. Primary antibody: TEM7 antibody at 2.5 µg/mL for 1 h at RT. Secondary antibody: Peroxidase rabbit secondary antibody at 1:10,000 for 45 min at RT. Localization: TEM7 is nuclear and occasionally cytoplasmic. Staining: TEM7 as precipitated red signal with hematoxylin purple nuclear counterstain.



Immunofluorescence Microscopy

Immunofluorescence Microscopy of TEM7 antibody. Tissue: Mouse liver tissue. Fixation: 0.5% PFA. Antigen retrieval: not required. Primary antibody: TEM7 antibody at 20 µg/mL for 1 h at RT. Secondary antibody: Fluorescein rabbit secondary antibody at 1:10,000 for 45 min at RT. Staining: TEM7 as a red fluorescent signal.

**Western Blot**

Western Blot of TEM7 antibody. Lane A: Human liver tissue lysate at 0.5 $\mu\text{g}/\text{mL}$. Lane B: Human liver tissue lysate at 1 $\mu\text{g}/\text{mL}$. Lane C: Human liver tissue lysate at 2 $\mu\text{g}/\text{mL}$. Load: 35 μg per lane. Secondary antibody: Peroxidase rabbit secondary antibody at 1:10,000 for 45 min at RT. Block: 5% BLOTTO overnight at 4°C. Predicted/Observed size: 30.3 kDa, ~53 kDa for TEM7.

Disclaimer

This product is for research use only and is not intended for therapeutic or diagnostic applications. Please contact a technical service representative for more information. All products of animal origin manufactured by Rockland Immunochemicals are derived from starting materials of North American origin. Collection was performed in United States Department of Agriculture (USDA) inspected facilities and all materials have been inspected and certified to be free of disease and suitable for exportation. All properties listed are typical characteristics and are not specifications. All suggestions and data are offered in good faith but without guarantee as conditions and methods of use of our products are beyond our control. All claims must be made within 30 days following the date of delivery. The prospective user must determine the suitability of our materials before adopting them on a commercial scale. Suggested uses of our products are not recommendations to use our products in violation of any patent or as a license under any patent of Rockland Immunochemicals, Inc. If you require a commercial license to use this material and do not have one, then return this material, unopened to: Rockland Inc., P.O. BOX 5199, Limerick, Pennsylvania, USA.