

**Datasheet for 600-401-FA4****TCF12 Antibody****Overview**

<b>Description:</b>	Anti-TCF12 (RABBIT) Antibody - 600-401-FA4
<b>Item No.:</b>	600-401-FA4
<b>Size:</b>	100 µg
<b>Applications:</b>	ELISA, IHC, WB
<b>Reactivity:</b>	Human, Mouse, Rat
<b>Host Species:</b>	Rabbit

**Product Details**

<b>Background:</b>	TCF12, also known as HTF4, is a member of the basic helix-loop-helix (bHLH) E-protein family that recognizes the consensus binding site (E-box) CANNTG. TCF12 is expressed in many tissues, among them skeletal muscle, thymus, B- and T-cells, and may participate in regulating lineage-specific gene expression through the formation of heterodimers with other bHLH E-proteins. TCF12, in combination with E2A, is required to block thymocyte proliferation prior to pre-TCR expression and is critical for proper T cell differentiation. Recent reports have shown that TCF12 is also a critical factor required for the development of invariant natural killer T cells.
<b>Synonyms:</b>	TCF12 Antibody, HEB, CRS3, HTF4, bHLHb20, HsT17266, BHLHB20, HEB, Transcription factor 12, Class B basic helix-loop-helix protein 20, TCF-12
<b>Host Species:</b>	Rabbit
<b>Clonality:</b>	Polyclonal
<b>Format:</b>	IgG

**Target Details**

<b>Gene Name:</b>	TCF12
<b>Reactivity:</b>	Human, Mouse, Rat
<b>Immunogen Type:</b>	Conjugated Peptide
<b>Immunogen:</b>	Anti-TCF12 antibody was prepared from whole rabbit serum produced by repeated immunizations with a 19 amino acid synthetic peptide near the N-terminus of human TCF12.

**Purity/Specificity:** Anti-TCF12 Antibody was affinity purified from monospecific antiserum by immunoaffinity chromatography. Cross reactivity with TCF12 from other sources has not been determined.

**Relevant Links:**

- [UniProtKB - Q99081](#)
- [GeneID - 6938](#)
- [NCBI - NP\\_001293149.1](#)

## Application Details

**Tested Applications:** ELISA, IHC, WB

**Application Note:** Anti-TCF12 Antibody has been tested for use in ELISA, Western Blotting, Immunocytochemistry. Specific conditions for reactivity should be optimized by the end user. Expect a band at approximately 73 kDa in Western Blots of specific cell lysates and tissues.

**Assay Dilutions:** All assays should be optimized by the user. Recommended dilutions (if any) may be listed below.

**ELISA:** 1:5000 - 1:10000

**WB:** 0.5-1 µg/mL

## Formulation

**Physical State:** Liquid (sterile filtered)

**Concentration:** 1 mg/mL by UV absorbance at 280 nm

**Buffer:** 0.01 M Sodium Phosphate, 0.25 M Sodium Chloride, pH 7.2

**Preservative:** 0.02% (w/v) Sodium Azide

**Stabilizer:** None

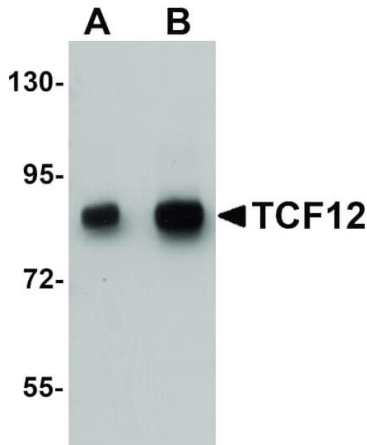
## Shipping & Handling

**Shipping Condition:** Dry Ice

**Storage Condition:** Store vial at -20° C prior to opening. Aliquot contents and freeze at -20° C or below for extended storage. Avoid cycles of freezing and thawing. Centrifuge product if not completely clear after standing at room temperature. This product is stable for several weeks at 4° C as an undiluted liquid. Dilute only prior to immediate use.

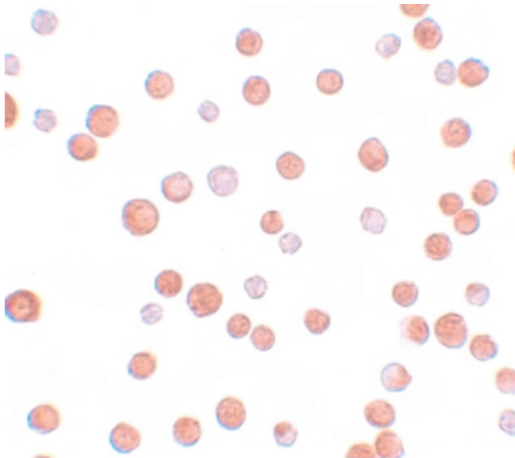
**Expiration:** Expiration date is one (1) year from date of receipt.

## Images



### Western Blot

Western Blot of TCF12 antibody. Lane 1: HeLa cell lysate with TCF12 antibody at 0.5 µg/mL. Lane 2: HeLa cell lysate with TCF12 antibody at 1 µg/mL. Secondary antibody: Peroxidase rabbit secondary antibody at 1:10,000 for 45 min at RT. Block: 5% BLOTTO overnight at 4°C. Predicted/Observed size: 73 kDa, 90 kDa for TCF12. Other band(s): TCF12 splice variants and isoforms.



### Immunohistochemistry

Immunocytochemistry of TCF12 antibody. Tissue: HeLa cells. Fixation: formalin fixed paraffin embedded. Antigen retrieval: not required. Primary antibody: TCF12 antibody at 10 µg/mL for 1 h at RT. Secondary antibody: Peroxidase rabbit secondary antibody at 1:10,000 for 45 min at RT. Localization: TCF12 is nuclear. Staining: TCF12 as precipitated blue signal with brown counterstain.

## Disclaimer

This product is for research use only and is not intended for therapeutic or diagnostic applications. Please contact a technical service representative for more information. All products of animal origin manufactured by Rockland Immunochemicals are derived from starting materials of North American origin. Collection was performed in United States Department of Agriculture (USDA) inspected facilities and all materials have been inspected and certified to be free of disease and suitable for exportation. All properties listed are typical characteristics and are not specifications. All suggestions and data are offered in good faith but without guarantee as conditions and methods of use of our products are beyond our control. All claims must be made within 30 days following the date of delivery. The prospective user must determine the suitability of our materials before adopting them on a commercial scale. Suggested uses of our products are not recommendations to use our products in violation of any patent or as a license under any patent of Rockland Immunochemicals, Inc. If you require a commercial license to use this material and do not have one, then return this material, unopened to: Rockland Inc., P.O. BOX 5199, Limerick, Pennsylvania, USA.