

Datasheet for 600-401-FA2**TCCR Antibody****Overview**

Description:	Anti-TCCR (RABBIT) Antibody - 600-401-FA2
Item No.:	600-401-FA2
Size:	100 µg
Applications:	ELISA, IF, IHC, WB
Reactivity:	Human
Host Species:	Rabbit

Product Details

Background:	Upon antigen challenge, T-helper cells differentiate into two functional distinct subsets, Th1 and Th2. Th1 cells produce IL-2, IFN-gamma and lymphotoxin-beta that augment cell mediated immune response while Th2 cells secrete IL-4, IL-5, and IL-10 that enhance humoral immunity. The function of T-helper cells is regulated by cytokines. A novel cytokine receptor was recently identified and cloned. It is a new member in the type I cytokine receptor family and designated TCCR for T-cell cytokine receptor and WSX-1. TCCR deficient mice had impaired Th1 responses to protein antigen challenge, including decreased levels of IFN-gamma and Th1-dependent antibody IgG2a. TCCR is predominately expressed in thymus, spleen, lymph nodes and peripheral blood leukocytes.
Synonyms:	Interleukin-27 receptor subunit alpha, IL-27 receptor subunit alpha, IL-27R subunit alpha, IL-27R-alpha, IL-27RA, Cytokine receptor WSX-1, Cytokine receptor-like 1, Type I T-cell cytokine receptor, TCCR, ZcytoR1, IL27RA, CRL1, TCCR, WSX1, UNQ296/PRO336
Host Species:	Rabbit
Clonality:	Polyclonal
Format:	IgG

Target Details

Gene Name:	TCCR
Reactivity:	Human
Immunogen Type:	Conjugated Peptide

Immunogen:	Anti-TCCR antibody was prepared from whole rabbit serum produced by repeated immunizations with a synthetic peptide corresponding to amino acids near the N-terminus of human TCCR precursor.
Purity/Specificity:	Anti-TCCR Antibody was affinity purified from monospecific antiserum by immunoaffinity chromatography. Cross reactivity with TCCR from other sources has not been determined.
Relevant Links:	<ul style="list-style-type: none">• UniProtKB - Q6UWB1• GeneID - 9466• NCBI - NP_004834.1

Application Details

Tested Applications:	ELISA, IF, IHC, WB
Application Note:	Anti-TCCR Antibody has been tested for use in ELISA, Western Blotting, Immunohistochemistry and Immunofluorescence. Specific conditions for reactivity should be optimized by the end user. Expect a band at approximately 69 kDa in Western Blots of specific cell lysates and tissues.
Assay Dilutions:	All assays should be optimized by the user. Recommended dilutions (if any) may be listed below.
ELISA:	1:10,000
IF:	20 µg/mL
IHC:	10 µg/mL
WB:	1 µg/mL

Formulation

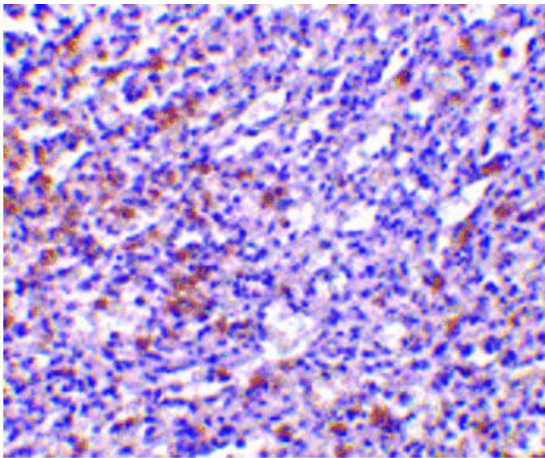
Physical State:	Liquid (sterile filtered)
Concentration:	1 mg/mL by UV absorbance at 280 nm
Buffer:	0.01 M Sodium Phosphate, 0.25 M Sodium Chloride, pH 7.2
Preservative:	0.02% (w/v) Sodium Azide
Stabilizer:	None

Shipping & Handling

Shipping Condition:	Dry Ice
----------------------------	---------

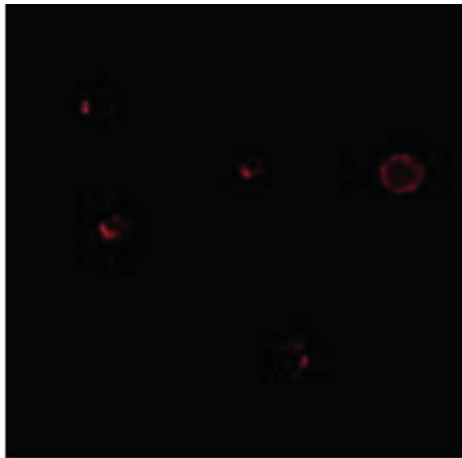
Storage Condition:	Store vial at -20° C prior to opening. Aliquot contents and freeze at -20° C or below for extended storage. Avoid cycles of freezing and thawing. Centrifuge product if not completely clear after standing at room temperature. This product is stable for several weeks at 4° C as an undiluted liquid. Dilute only prior to immediate use.
Expiration:	Expiration date is one (1) year from date of receipt.

Images



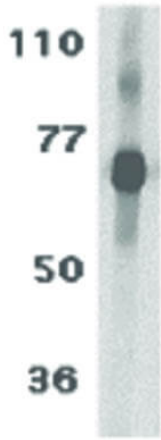
Immunohistochemistry

Immunohistochemistry of TCCR antibody. Tissue: Human spleen tissue. Fixation: formalin fixed paraffin embedded. Antigen retrieval: not required. Primary antibody: TCCR antibody at 10 µg/mL for 1 h at RT. Secondary antibody: Peroxidase rabbit secondary antibody at 1:10,000 for 45 min at RT. Localization: TCCR is localized in the cell membrane. Staining: TCCR as precipitated brown signal with hematoxylin purple nuclear counterstain.



Immunofluorescence Microscopy

Immunofluorescence Microscopy of TCCR antibody. Tissue: A549 cells. Fixation: 0.5% PFA. Antigen retrieval: not required. Primary antibody: TCCR antibody at 20 µg/mL for 1 h at RT. Secondary antibody: Fluorescein rabbit secondary antibody at 1:10,000 for 45 min at RT. Localization: TCCR is localized in the cell membrane. Staining: TCCR as red fluorescent signal.

**Western Blot**

Western Blot of TCCR antibody. Lane 1: Human spleen tissue lysate. Load: 35 μ g per lane. Primary antibody: TCCR antibody at 1 μ g/mL for overnight at 4°C. Secondary antibody: Peroxidase rabbit secondary antibody at 1:10,000 for 45 min at RT. Block: 5% BLOTTO overnight at 4°C. Predicted/Observed size: 69.4 kDa, 70 kDa for TCCR. Other band(s): TCCR splice variants and isoforms.

Disclaimer

This product is for research use only and is not intended for therapeutic or diagnostic applications. Please contact a technical service representative for more information. All products of animal origin manufactured by Rockland Immunochemicals are derived from starting materials of North American origin. Collection was performed in United States Department of Agriculture (USDA) inspected facilities and all materials have been inspected and certified to be free of disease and suitable for exportation. All properties listed are typical characteristics and are not specifications. All suggestions and data are offered in good faith but without guarantee as conditions and methods of use of our products are beyond our control. All claims must be made within 30 days following the date of delivery. The prospective user must determine the suitability of our materials before adopting them on a commercial scale. Suggested uses of our products are not recommendations to use our products in violation of any patent or as a license under any patent of Rockland Immunochemicals, Inc. If you require a commercial license to use this material and do not have one, then return this material, unopened to: Rockland Inc., P.O. BOX 5199, Limerick, Pennsylvania, USA.