

Datasheet for 600-401-F85**KDEL Antibody****Overview**

Description:	Anti-KDEL (RABBIT) Antibody - 600-401-F85
Item No.:	600-401-F85
Size:	200 µg
Applications:	IF, IHC, WB
Reactivity:	Human, Mouse, Rat
Host Species:	Rabbit

Product Details

Background:	The endoplasmic reticulum is part of a protein sorting pathway, or in essence, the transportation system of the eukaryotic cell. The majority of endoplasmic reticulum resident proteins are retained in the endoplasmic reticulum through a retention motif. This motif is composed of four amino acids at the C-terminal end of the protein sequence. The most common retention sequence is KDEL (lys-asp-glu-leu). Grp78 and Grp94 and PDI all share the C-terminal KDEL sequence. The presence of carboxy-terminal KDEL appears to be necessary for ER retention and appears to be sufficient to reduce the secretion of proteins from the ER.
Synonyms:	Lys Asp Glu Leu, K-D-E-L, ER lumen protein retaining receptor 1, KDEL endoplasmic reticulum protein retention, Kdelr1
Host Species:	Rabbit
Clonality:	Polyclonal
Format:	IgG

Target Details

Gene Name:	KDEL1
Reactivity:	Human, Mouse, Rat
Immunogen Type:	Conjugated Peptide
Immunogen:	KDEL Antibody was produced from whole rabbit serum prepared by repeated immunizations raised against KDEL containing synthetic peptide immunogen.

Purity/Specificity: Anti-KDEL Antibody was purified by affinity chromatography. A BLAST analysis was used to suggest cross-reactivity with KDEL from Human, Mouse, and Rat based on 100% homology with the immunizing sequence. Recognizes KDEL proteins, GRP94, Grp78, PDI and calreticulin. It may also see ERp57 and ERp29. Cross-reactivity with KDEL from other sources has not been determined. Organell Marker research.

Relevant Links:

- [UniProtKB - P24390](#)
- [NCBI - NP_006792.1](#)
- [GeneID - 10945](#)

Application Details

Tested Applications: IF, IHC, WB

Application Note: Anti-KDEL Antibody is tested for use in WB, IF, and IHC. Specific conditions for reactivity should be optimized by the end user.

Assay Dilutions: All assays should be optimized by the user. Recommended dilutions (if any) may be listed below.

WB: 1:1000

Formulation

Physical State: Liquid (sterile filtered)

Concentration: 1.0 mg/mL by UV absorbance at 280 nm

Buffer: 0.02 M Potassium Phosphate, 0.15 M Sodium Chloride, pH 7.2

Preservative: 0.09% (w/v) Sodium Azide

Stabilizer: 50% (v/v) Glycerol

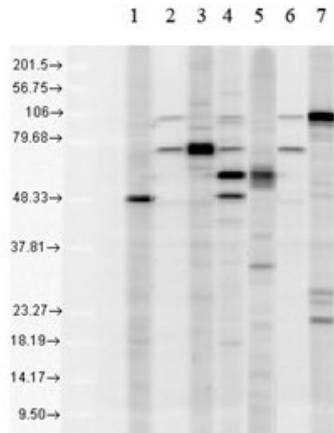
Shipping & Handling

Shipping Condition: Wet Ice

Storage Condition: Store vial at -20° C prior to opening. Aliquot contents and freeze at -20° C or below for extended storage. Avoid cycles of freezing and thawing. Centrifuge product if not completely clear after standing at room temperature. This product is stable for several weeks at 4° C as an undiluted liquid. Dilute only prior to immediate use.

Expiration: Expiration date is one (1) year from date of receipt.

Images



Western Blot

Western Blot of rabbit anti-KDEL antibody. Load: mixed human cell lysates (300ug/gel). Lane 1: PDI control. Lane 2: KDEL control clone. Lane 3: Grp78 control. Lane 4: SPC-109. Lane 5: Calreticulin control. Lane 6: KDEL control clone. Lane 7: Grp94: control. Primary antibody: anti-KDEL at 1:500 for overnight at 4°C. Secondary antibody: Goat anti-rabbit IgG HRP secondary antibody at 1:10,000 for 45 min at RT. Block: 5% Blotto overnight 4°C. Predicted/Observed size: 59kDa/45-110 kDa. Other band(s): Recognizes KDEL proteins, GRP94, Grp78, PDI and calreticulin. It may also see ERp57 and ERp29.

Disclaimer

This product is for research use only and is not intended for therapeutic or diagnostic applications. Please contact a technical service representative for more information. All products of animal origin manufactured by Rockland Immunochemicals are derived from starting materials of North American origin. Collection was performed in United States Department of Agriculture (USDA) inspected facilities and all materials have been inspected and certified to be free of disease and suitable for exportation. All properties listed are typical characteristics and are not specifications. All suggestions and data are offered in good faith but without guarantee as conditions and methods of use of our products are beyond our control. All claims must be made within 30 days following the date of delivery. The prospective user must determine the suitability of our materials before adopting them on a commercial scale. Suggested uses of our products are not recommendations to use our products in violation of any patent or as a license under any patent of Rockland Immunochemicals, Inc. If you require a commercial license to use this material and do not have one, then return this material, unopened to: Rockland Inc., P.O. BOX 5199, Limerick, Pennsylvania, USA.