

Datasheet for 600-401-EZ9**TBX21 Antibody****Overview**

Description:	Anti-TBX21 (RABBIT) Antibody - 600-401-EZ9
Item No.:	600-401-EZ9
Size:	100 µg
Applications:	ELISA, IF, WB
Reactivity:	Human, Mouse
Host Species:	Rabbit

Product Details

Background:	TBX21 is a member of a phylogenetically conserved family of genes that share a common DNA-binding domain, the T-box (1,2). Members of this family include transcription factors involved in the regulation of developmental processes (2). Studies in mouse and humans show that TBX21 is a Th1 cell-specific transcription factor that controls the expression of the hallmark Th1 cytokine, interferon-gamma (1,3). Expression of the human ortholog also correlates with interferon-gamma expression in Th1 and natural killer cells, suggesting a TBX21 may play a role in initiating Th1 lineage development from naive Th precursor cells. (3).
Synonyms:	TBX21 Antibody , TBET, T-PET, T-bet, TBLYM, TBET, T-box transcription factor TBX21, T-cell-specific T-box transcription factor T-bet, T-box protein 21
Host Species:	Rabbit
Clonality:	Polyclonal
Format:	IgG

Target Details

Gene Name:	TBX21
Reactivity:	Human, Mouse
Immunogen Type:	Conjugated Peptide
Immunogen:	Anti-TBX21 antibody was prepared from whole rabbit serum produced by repeated immunizations with a 19 amino acid peptide near the C-terminus of human TBX2.

Purity/Specificity: Anti-TBX21 Antibody was affinity purified from monospecific antiserum by immunoaffinity chromatography. TBX21 antibody is human and mouse reactive.

Relevant Links:

- [UniProtKB - Q9UL17](#)
- [GeneID - 30009](#)
- [NCBI - NP_037483.1](#)

Application Details

Tested Applications: ELISA, IF, WB

Application Note: Anti-TBX21 Antibody has been tested for use in ELISA, Western Blotting and Immunofluorescence. Specific conditions for reactivity should be optimized by the end user. Expect a band at approximately 58 kDa in Western Blots of specific cell lysates and tissues.

Assay Dilutions: All assays should be optimized by the user. Recommended dilutions (if any) may be listed below.

ELISA: User Optimized

IF: User Optimized

WB: 1 - 2 µg/mL

Formulation

Physical State: Liquid (sterile filtered)

Concentration: 1.0mg/mL by UV absorbance at 280 nm

Buffer: 0.01 M Sodium Phosphate, 0.25 M Sodium Chloride, pH 7.2

Preservative: 0.02% (w/v) Sodium Azide

Stabilizer: None

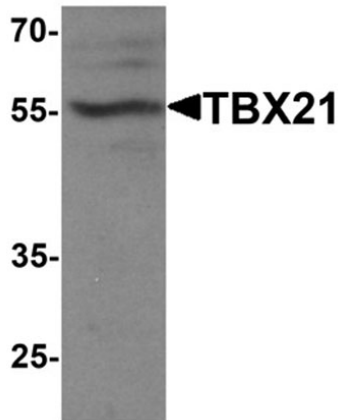
Shipping & Handling

Shipping Condition: Dry Ice

Storage Condition: Store vial at -20° C prior to opening. Aliquot contents and freeze at -20° C or below for extended storage. Avoid cycles of freezing and thawing. Centrifuge product if not completely clear after standing at room temperature. This product is stable for several weeks at 4° C as an undiluted liquid. Dilute only prior to immediate use.

Expiration: Expiration date is one (1) year from date of receipt.

Images

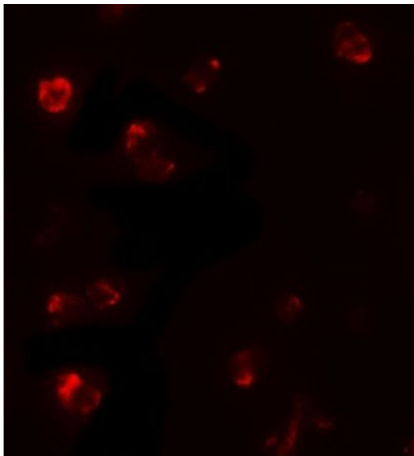


Western Blot

Western blot of TBX21.

Load: 293 cell lysate.

Primary Antibody: TBX21 antibody at 1 µg/ml.



Immunofluorescence Microscopy

Immunofluorescence of TBX21.

Cell: 293 cells.

Primary Antibody: TBX21 antibody at 5 µg/mL.

Disclaimer

This product is for research use only and is not intended for therapeutic or diagnostic applications. Please contact a technical service representative for more information. All products of animal origin manufactured by Rockland Immunochemicals are derived from starting materials of North American origin. Collection was performed in United States Department of Agriculture (USDA) inspected facilities and all materials have been inspected and certified to be free of disease and suitable for exportation. All properties listed are typical characteristics and are not specifications. All suggestions and data are offered in good faith but without guarantee as conditions and methods of use of our products are beyond our control. All claims must be made within 30 days following the date of delivery. The prospective user must determine the suitability of our materials before adopting them on a commercial scale. Suggested uses of our products are not recommendations to use our products in violation of any patent or as a license under any patent of Rockland Immunochemicals, Inc. If you require a commercial license to use this material and do not have one, then return this material, unopened to: Rockland Inc., P.O. BOX 5199, Limerick, Pennsylvania, USA.