

Datasheet for 600-401-EZ8**TBC1D1 Antibody****Overview**

Description:	Anti-TBC1D1 (RABBIT) Antibody - 600-401-EZ8
Item No.:	600-401-EZ8
Size:	100 µg
Applications:	ELISA, WB
Reactivity:	Human
Host Species:	Rabbit

Product Details

Background:	TBC1D1 is the founding member of a family of proteins sharing a 180- to 200-amino acid TBC domain and presumed to have a role in regulating cell growth and differentiation. These proteins share significant homology with TRE2/USP6, yeast Bub2, and CDC16. TBC1D1 and TBC1D4 (AS160) have been demonstrated to be Rab GAPs (GTPase-activating proteins) that link upstream to Akt and phosphoinositide 3-kinase and downstream to Rabs involved in trafficking of GLUT4 vesicles. TBC1D1 regulates insulin-mediated GLUT4 translocation through its GAP activity, and is a likely Akt substrate. Mutations in the Tbc1d1 gene lead to some cases of severe human obesity.
Synonyms:	TBC1D1 Antibody, TBC, TBC1, KIAA1108, TBC1 domain family member 1
Host Species:	Rabbit
Clonality:	Polyclonal
Format:	IgG

Target Details

Gene Name:	TBC1D1
Reactivity:	Human
Immunogen Type:	Conjugated Peptide
Immunogen:	Anti-TBC1D1 antibody was prepared from whole rabbit serum produced by repeated immunizations with a 22 amino acid synthetic peptide from near the C-terminus of human TBC1D1.

Purity/Specificity:	Anti-TBC1D1 Antibody was affinity purified from monospecific antiserum by immunoaffinity chromatography. Cross reactivity with TBC1D1 from other sources has not been determined.
Relevant Links:	<ul style="list-style-type: none">• UniProtKB - Q86T10• GeneID - 23216• NCBI - NP_001240841.1

Application Details

Tested Applications:	ELISA, WB
Application Note:	Anti-TBC1D1 Antibody has been tested for use in ELISA and Western Blotting. Specific conditions for reactivity should be optimized by the end user. Expect a band at approximately 133 kDa in Western Blots of specific cell lysates and tissues.
Assay Dilutions:	All assays should be optimized by the user. Recommended dilutions (if any) may be listed below.
ELISA:	1:10,000 - 1:40,000
WB:	1-4 µg/mL

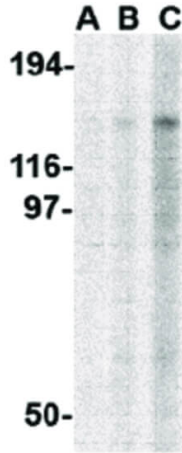
Formulation

Physical State:	Liquid (sterile filtered)
Concentration:	1 mg/mL by UV absorbance at 280 nm
Buffer:	0.01 M Sodium Phosphate, 0.25 M Sodium Chloride, pH 7.2
Preservative:	0.02% (w/v) Sodium Azide
Stabilizer:	None

Shipping & Handling

Shipping Condition:	Dry Ice
Storage Condition:	Store vial at -20° C prior to opening. Aliquot contents and freeze at -20° C or below for extended storage. Avoid cycles of freezing and thawing. Centrifuge product if not completely clear after standing at room temperature. This product is stable for several weeks at 4° C as an undiluted liquid. Dilute only prior to immediate use.
Expiration:	Expiration date is one (1) year from date of receipt.

Images



Western Blot

Western Blot of TBC1D1 antibody. Lane A: Daudi cell lysate at 1 $\mu\text{g}/\text{mL}$. Lane B: Daudi cell lysate at 2 $\mu\text{g}/\text{mL}$. Lane C: Daudi cell lysate at 4 $\mu\text{g}/\text{mL}$. Load: 35 μg per lane. Secondary antibody: Peroxidase rabbit secondary antibody at 1:10,000 for 45 min at RT. Block: 5% BLOTTO overnight at 4°C. Predicted/Observed size: 78.6 kDa, ~125 kDa for TBC1D1.

Disclaimer

This product is for research use only and is not intended for therapeutic or diagnostic applications. Please contact a technical service representative for more information. All products of animal origin manufactured by Rockland Immunochemicals are derived from starting materials of North American origin. Collection was performed in United States Department of Agriculture (USDA) inspected facilities and all materials have been inspected and certified to be free of disease and suitable for exportation. All properties listed are typical characteristics and are not specifications. All suggestions and data are offered in good faith but without guarantee as conditions and methods of use of our products are beyond our control. All claims must be made within 30 days following the date of delivery. The prospective user must determine the suitability of our materials before adopting them on a commercial scale. Suggested uses of our products are not recommendations to use our products in violation of any patent or as a license under any patent of Rockland Immunochemicals, Inc. If you require a commercial license to use this material and do not have one, then return this material, unopened to: Rockland Inc., P.O. BOX 5199, Limerick, Pennsylvania, USA.