

Datasheet for 600-401-EZ5**TAF9 Antibody****Overview**

Description:	Anti-TAF9 (RABBIT) Antibody - 600-401-EZ5
Item No.:	600-401-EZ5
Size:	100 µg
Applications:	ELISA, IF, IHC, WB
Reactivity:	Human, Mouse, Rat
Host Species:	Rabbit

Product Details

Background:	Initiation of transcription by RNA polymerase II is coordinated by the transcription factor IID (TFIID), which binds to the core promoter to position the polymerase properly, serves as the scaffold for assembly of the remainder of the transcription complex, and acts as a channel for regulatory signals. TFIID is composed of the TATA-binding protein (TBP) and the TBP-associated factors (TAFs). TAFs may participate in basal transcription, serve as coactivators, function in promoter recognition or modify general transcription factors (GTFs) to facilitate complex assembly and transcription initiation (1). TAF9 is one of the smaller subunits of TFIID that binds to the basal transcription factor GTF2B as well as to several transcriptional activators such as p53 and VP16 (2).
Synonyms:	TAF9 Antibody, TAF2G, TAFII31, TAFII32, MGC,5067, TAFII-31, TAFII-32, TAFIID32, STAF31/32, TAF2G, Transcription initiation factor TFIID subunit 9, RNA polymerase II TBP-associated factor subunit G
Host Species:	Rabbit
Clonality:	Polyclonal
Format:	IgG

Target Details

Gene Name:	TAF9
Reactivity:	Human, Mouse, Rat
Immunogen Type:	Conjugated Peptide

Immunogen:	Anti-TAF9 antibody was prepared from whole rabbit serum produced by repeated immunizations with a 17 amino acid peptide near the internal region of human TAF9.
Purity/Specificity:	Anti-TAF9 antibody was affinity purified from monospecific antiserum by immunoaffinity chromatography. TAF9 antibody is human, mouse and rat reactive. Multiple isoforms of TAF9 are known to exist. TAF9 is predicted to not cross-react with other TAF family members.
Relevant Links:	<ul style="list-style-type: none">• UniProtKB - Q16594• GeneID - 94122• NCBI - NP_001015892.1

Application Details

Tested Applications:	ELISA, IF, IHC, WB
Application Note:	Anti-TAF9 Antibody has been tested for use in ELISA, Western Blotting, Immunohistochemistry and Immunofluorescence. Specific conditions for reactivity should be optimized by the end user. Expect a band at approximately 29 kDa in Western Blots of specific cell lysates and tissues.
Assay Dilutions:	All assays should be optimized by the user. Recommended dilutions (if any) may be listed below.
ELISA:	1:10,000 - 1:20,000
IF:	20 µg/mL
IHC:	5 µg/mL
WB:	1-2 µg/mL

Formulation

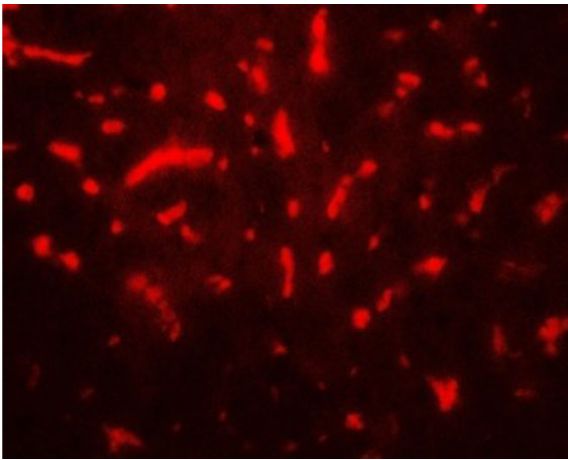
Physical State:	Liquid (sterile filtered)
Concentration:	1 mg/mL by UV absorbance at 280 nm
Buffer:	0.01 M Sodium Phosphate, 0.25 M Sodium Chloride, pH 7.2
Preservative:	0.02% (w/v) Sodium Azide
Stabilizer:	None

Shipping & Handling

Shipping Condition:	Dry Ice
----------------------------	---------

Storage Condition:	Store vial at -20° C prior to opening. Aliquot contents and freeze at -20° C or below for extended storage. Avoid cycles of freezing and thawing. Centrifuge product if not completely clear after standing at room temperature. This product is stable for several weeks at 4° C as an undiluted liquid. Dilute only prior to immediate use.
Expiration:	Expiration date is one (1) year from date of receipt.

Images

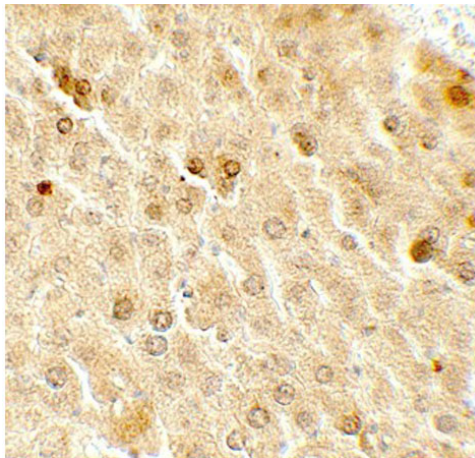


Immunofluorescence Microscopy

Immunofluorescence of TAF9.

Tissue: mouse liver tissue.

Primary Antibody: TAF9 antibody at 20 µg/mL.

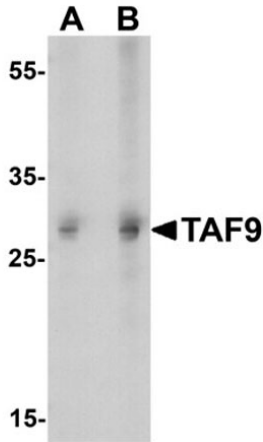


Immunohistochemistry

Immunohistochemistry of TAF9.

Tissue: mouse liver tissue.

Primary Antibody: TAF9 antibody at 5 µg/mL.

**Western Blot**

Western blot of TAF9.

Load: HepG2 cell lysate.

Primary Antibody: TAF9 antibody at (A) 1 and (B) 2 μ g/ml.**Disclaimer**

This product is for research use only and is not intended for therapeutic or diagnostic applications. Please contact a technical service representative for more information. All products of animal origin manufactured by Rockland Immunochemicals are derived from starting materials of North American origin. Collection was performed in United States Department of Agriculture (USDA) inspected facilities and all materials have been inspected and certified to be free of disease and suitable for exportation. All properties listed are typical characteristics and are not specifications. All suggestions and data are offered in good faith but without guarantee as conditions and methods of use of our products are beyond our control. All claims must be made within 30 days following the date of delivery. The prospective user must determine the suitability of our materials before adopting them on a commercial scale. Suggested uses of our products are not recommendations to use our products in violation of any patent or as a license under any patent of Rockland Immunochemicals, Inc. If you require a commercial license to use this material and do not have one, then return this material, unopened to: Rockland Inc., P.O. BOX 5199, Limerick, Pennsylvania, USA.