

Datasheet for 600-401-EZ1**TAB1 Antibody****Overview**

Description:	Anti-TAB1 (RABBIT) Antibody - 600-401-EZ1
Item No.:	600-401-EZ1
Size:	100 µg
Applications:	ELISA, IF, IHC, WB
Reactivity:	Human, Mouse
Host Species:	Rabbit

Product Details

Background:	TAB1 was identified as a regulator of the MAP kinase kinase kinase TAK1/MAP3K7, which is known to mediate various intracellular signaling pathways, such as those induced by TGF-beta and members of the Toll-IL-1R (TIR) superfamily, thus acting as an intermediate in both proliferative and innate and adaptive immune responses. This protein, together with either TAB2 or TAB3, activates TAK1 kinase in response to upstream signals. It has been shown that the C-terminal portion of TAB1 is sufficient for binding and activation of TAK1, while a portion of the N-terminus acts as a dominant-negative inhibitor of TGF-beta, demonstrating how this protein can function as a mediator between TGF-beta receptors and TAK1.
Synonyms:	TGF-beta-activated kinase 1 and MAP3K7-binding protein 1, Mitogen-activated protein kinase kinase kinase 7-interacting protein 1, TGF-beta-activated kinase 1-binding protein 1, TAK1-binding protein 1, TAB1, MAP3K7IP1
Host Species:	Rabbit
Clonality:	Polyclonal
Format:	IgG

Target Details

Gene Name:	TAB1
Reactivity:	Human, Mouse
Immunogen Type:	Conjugated Peptide

Immunogen:	Anti-TAB1 antibody was prepared from whole rabbit serum produced by repeated immunizations with a synthetic peptide corresponding to 13 amino acids in the internal of human TAB1.
Purity/Specificity:	Anti-TAB1 Antibody was affinity purified from monospecific antiserum by immunoaffinity chromatography. Cross reactivity with TAB1 from other sources has not been determined.
Relevant Links:	<ul style="list-style-type: none">• UniProtKB - Q15750• GeneID - 10454• NCBI - NP_006107

Application Details

Tested Applications:	ELISA, IF, IHC, WB
Application Note:	Anti-TAB1 Antibody has been tested for use in ELISA, Western Blotting, Immunocytochemistry and Immunofluorescence. Specific conditions for reactivity should be optimized by the end user. Expect a band at approximately 55 kDa in Western Blots of specific cell lysates and tissues.
Assay Dilutions:	All assays should be optimized by the user. Recommended dilutions (if any) may be listed below.
ELISA:	1:5000 - 1:20,000
IF:	2 µg/mL
WB:	0.5 to 2 µg/mL

Formulation

Physical State:	Liquid (sterile filtered)
Concentration:	1 mg/mL by UV absorbance at 280 nm
Buffer:	0.01 M Sodium Phosphate, 0.25 M Sodium Chloride, pH 7.2
Preservative:	0.02% (w/v) Sodium Azide
Stabilizer:	None

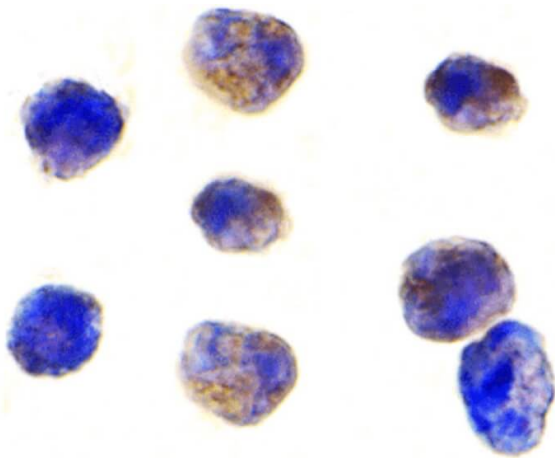
Shipping & Handling

Shipping Condition:	Dry Ice
----------------------------	---------

Storage Condition: Store vial at -20° C prior to opening. Aliquot contents and freeze at -20° C or below for extended storage. Avoid cycles of freezing and thawing. Centrifuge product if not completely clear after standing at room temperature. This product is stable for several weeks at 4° C as an undiluted liquid. Dilute only prior to immediate use.

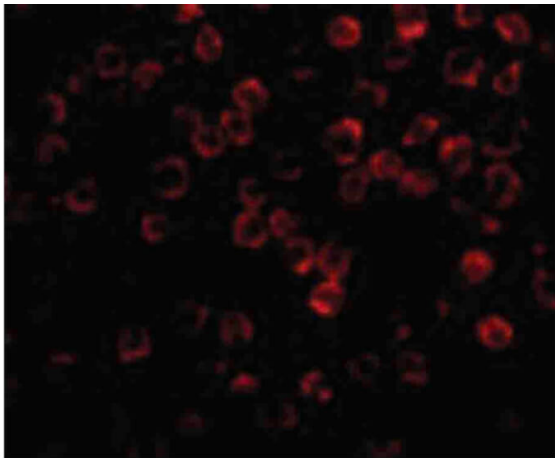
Expiration: Expiration date is one (1) year from date of receipt.

Images



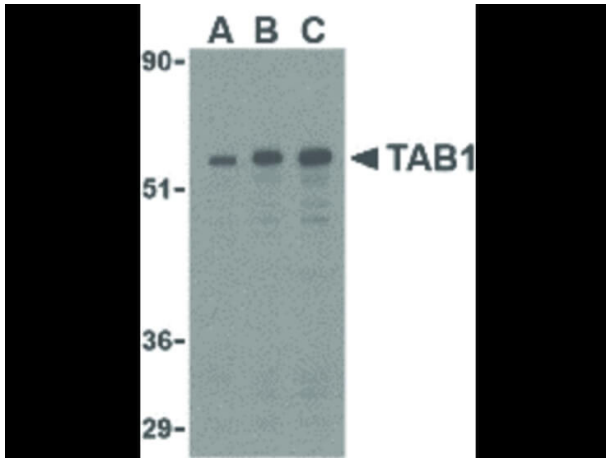
Immunohistochemistry

Immunocytochemistry of TAB1 antibody. Cell Type: K562 cells. Fixation: formalin fixed paraffin embedded. Antigen retrieval: not required. Primary antibody: TAB1 antibody at 1 µg/mL for 1 h at RT. Secondary antibody: Peroxidase rabbit secondary antibody at 1:10,000 for 45 min at RT. Localization: TAB1 is located in the cell junction, cell membrane, synapse, and synaptosome. Staining: TAB1 is stained brown with hematoxylin purple counterstain.



Immunofluorescence Microscopy

Immunofluorescence Microscopy of TAB1 antibody. Cell Type: 3T3 cells. Fixation: 0.5% PFA. Antigen retrieval: not required. Primary antibody: TAB1 antibody at 2 µg/mL for 1 h at RT. Secondary antibody: Fluorescein rabbit secondary antibody at 1:10,000 for 45 min at RT. Localization: TAB1 is located in the cell junction, cell membrane, synapse, and synaptosome. Staining: TAB1 as red fluorescent signal.

**Western Blot**

Western Blot of TAB1 antibody in 3T3 cell lysate. Lane A: TAB1 antibody at 0.5 µg/mL. Lane B: TAB1 antibody at 1 µg/mL. Lane C: TAB1 antibody at 2 µg/mL. Load: 35 µg per lane. Primary antibody: TAB1 antibody at designated concentrations for overnight at 4°C. Secondary antibody: Peroxidase rabbit secondary antibody at 1:10,000 for 45 min at RT. Block: 5% BLOTTO overnight at 4°C. Predicted/Observed size: 54 kDa, 55 kDa for TAB1. Other band(s): TAB1 splice variants and isoforms.

Disclaimer

This product is for research use only and is not intended for therapeutic or diagnostic applications. Please contact a technical service representative for more information. All products of animal origin manufactured by Rockland Immunochemicals are derived from starting materials of North American origin. Collection was performed in United States Department of Agriculture (USDA) inspected facilities and all materials have been inspected and certified to be free of disease and suitable for exportation. All properties listed are typical characteristics and are not specifications. All suggestions and data are offered in good faith but without guarantee as conditions and methods of use of our products are beyond our control. All claims must be made within 30 days following the date of delivery. The prospective user must determine the suitability of our materials before adopting them on a commercial scale. Suggested uses of our products are not recommendations to use our products in violation of any patent or as a license under any patent of Rockland Immunochemicals, Inc. If you require a commercial license to use this material and do not have one, then return this material, unopened to: Rockland Inc., P.O. BOX 5199, Limerick, Pennsylvania, USA.