

**Datasheet for 600-401-EY8****SYPL1 Antibody****Overview**

<b>Description:</b>	Anti-SYPL1 (RABBIT) Antibody - 600-401-EY8
<b>Item No.:</b>	600-401-EY8
<b>Size:</b>	100 µg
<b>Applications:</b>	ELISA, WB
<b>Reactivity:</b>	Human, Mouse, Rat
<b>Host Species:</b>	Rabbit

**Product Details**

<b>Background:</b>	The synaptophysin-like protein 1, also known as pantophysin, is a homolog of the neuroendocrine-specific protein synaptophysin, with the highest level of homology across its four transmembrane domains. Unlike synaptophysin however, SYPL1 is ubiquitously expressed and found in small cytoplasmic transport vesicles regardless of their content. SYPL1 is thought to play a multifunctional role in vesicle biogenesis and transport and is a component of adipocyte transport vesicles, and thus may be involved in adipocyte secretion. SYPL1 also interacts with vesicle-associated membrane protein 2 (VAMP-2) in adipocytes and associates with GLUT4-containing vesicles.
<b>Synonyms:</b>	SYPL1 Antibody, SYPL, H-SP1, SYPL, Synaptophysin-like protein 1, Pantophysin
<b>Host Species:</b>	Rabbit
<b>Clonality:</b>	Polyclonal
<b>Format:</b>	IgG

**Target Details**

<b>Gene Name:</b>	SYPL1
<b>Reactivity:</b>	Human, Mouse, Rat
<b>Immunogen Type:</b>	Conjugated Peptide
<b>Immunogen:</b>	Anti-SYPL1 antibody was prepared from whole rabbit serum produced by repeated immunizations with a 16 amino acid synthetic peptide from near the N-terminus of human SYPL1.

**Purity/Specificity:** Anti-SYPL1 Antibody was affinity purified from monospecific antiserum by immunoaffinity chromatography. This antibody will not recognize synaptophysin or SYPL2. Two isoforms of SYPL1 are known to exist; this antibody will only recognize the longer isoform.

**Relevant Links:**

- [UniProtKB - Q16563](#)
- [GeneID - 6856](#)
- [NCBI - NP\\_006745.1](#)

## Application Details

**Tested Applications:** ELISA, WB

**Application Note:** Anti-SYPL1 Antibody has been tested for use in ELISA and Western Blotting. Specific conditions for reactivity should be optimized by the end user. Expect a band at approximately 29 kDa in Western Blots of specific cell lysates and tissues.

**Assay Dilutions:** All assays should be optimized by the user. Recommended dilutions (if any) may be listed below.

**ELISA:** 1:10,000

**WB:** 1 µg/mL

## Formulation

**Physical State:** Liquid (sterile filtered)

**Concentration:** 1 mg/mL by UV absorbance at 280 nm

**Buffer:** 0.01 M Sodium Phosphate, 0.25 M Sodium Chloride, pH 7.2

**Preservative:** 0.02% (w/v) Sodium Azide

**Stabilizer:** None

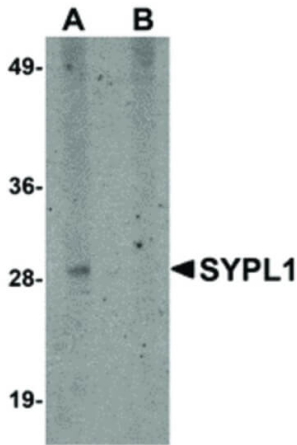
## Shipping & Handling

**Shipping Condition:** Dry Ice

**Storage Condition:** Store vial at -20° C prior to opening. Aliquot contents and freeze at -20° C or below for extended storage. Avoid cycles of freezing and thawing. Centrifuge product if not completely clear after standing at room temperature. This product is stable for several weeks at 4° C as an undiluted liquid. Dilute only prior to immediate use.

**Expiration:** Expiration date is one (1) year from date of receipt.

## Images



### Western Blot

Western Blot of SYPL1 antibody. Lane 1: human brain tissue lysate in the absence of blocking peptide. Lane 2: human brain tissue lysate in the presence of blocking peptide.

Primary Antibody: Anti-SYPL1 antibody at 1 µg/mL.

Secondary antibody: Peroxidase rabbit secondary antibody at 1:10,000 for 45 min at RT. Block: 5% BLOTTO overnight at 4°C. Predicted/Observed size: 29 kDa, 29 kDa for SYPL1.

Other band(s): SYPL1 splice variants and isoforms.

## Disclaimer

This product is for research use only and is not intended for therapeutic or diagnostic applications. Please contact a technical service representative for more information. All products of animal origin manufactured by Rockland Immunochemicals are derived from starting materials of North American origin. Collection was performed in United States Department of Agriculture (USDA) inspected facilities and all materials have been inspected and certified to be free of disease and suitable for exportation. All properties listed are typical characteristics and are not specifications. All suggestions and data are offered in good faith but without guarantee as conditions and methods of use of our products are beyond our control. All claims must be made within 30 days following the date of delivery. The prospective user must determine the suitability of our materials before adopting them on a commercial scale. Suggested uses of our products are not recommendations to use our products in violation of any patent or as a license under any patent of Rockland Immunochemicals, Inc. If you require a commercial license to use this material and do not have one, then return this material, unopened to: Rockland Inc., P.O. BOX 5199, Limerick, Pennsylvania, USA.