

Datasheet for 600-401-EY4

SYNPO2 Antibody

Overview

Description:	Anti-SYNPO2 (RABBIT) Antibody - 600-401-EY4
Item No.:	600-401-EY4
Size:	100 µg
Applications:	ELISA, IF, IHC, WB
Reactivity:	Human, Mouse
Host Species:	Rabbit

Product Details

Background:	SYNPO2 was initially identified as myopodin, a member of the synaptopodin family that contains one PPXY motif and multiple PXXP motifs. It colocalizes with alpha-actinin and is found at the Z-disc and during stress conditions will translocate to the nucleus, suggesting that it is part of signaling pathways in addition to its function as a structural protein. SYNPO2 has been shown to bind to calmodulin, alpha-actinin, and smooth muscle myosin and will stimulate actin polymerization in a calmodulin dependent manner, consistent with its proposed role in organizing the cytoskeleton. While deletion of SYNPO2 has been reported to be highly correlated with the invasiveness of prostate cancers, other reports suggest that down-regulation of SYNPO2 reduces the invasiveness and motility of prostate cancer cells.
Synonyms:	SYNPO2 Antibody, Synaptopodin-2, Genethonin-2
Host Species:	Rabbit
Clonality:	Polyclonal
Format:	IgG

Target Details

Gene Name:	SYNPO2
Reactivity:	Human, Mouse
Immunogen Type:	Conjugated Peptide
Immunogen:	Anti-SYNPO2 antibody was prepared from whole rabbit serum produced by repeated immunizations with a 20 amino acid synthetic peptide near the N-terminus of human SYNPO2.

Purity/Specificity: Anti-SYNPO2 Antibody was affinity purified from monospecific antiserum by immunoaffinity chromatography. Cross reactivity with SYNPO2 from other sources has not been determined.

Relevant Links:

- [UniProtKB - Q9UMS6](#)
- [GeneID - 171024](#)
- [NCBI - NP_001122405.1](#)

Application Details

Tested Applications: ELISA, IF, IHC, WB

Application Note: Anti-SYNPO2 Antibody has been tested for use in ELISA, Western Blotting, Immunohistochemistry and Immunofluorescence. Specific conditions for reactivity should be optimized by the end user. Expect a band at approximately 118 kDa in Western Blots of specific cell lysates and tissues.

Assay Dilutions: All assays should be optimized by the user. Recommended dilutions (if any) may be listed below.

ELISA: 1:10,000

IF: 20 µg/mL

IHC: 5 µg/mL

WB: 1 µg/mL

Formulation

Physical State: Liquid (sterile filtered)

Concentration: 1.0 mg/mL by UV absorbance at 280 nm

Buffer: 0.01 M Sodium Phosphate, 0.25 M Sodium Chloride, pH 7.2

Preservative: 0.02% (w/v) Sodium Azide

Stabilizer: None

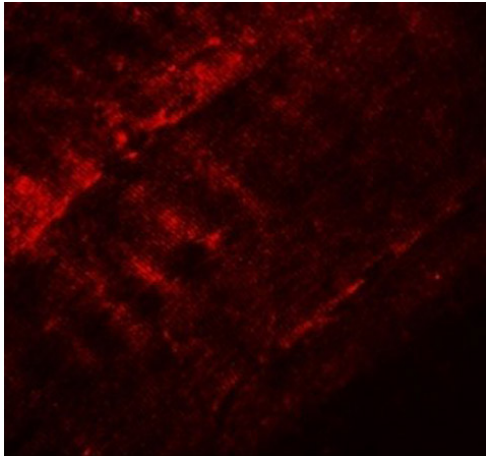
Shipping & Handling

Shipping Condition: Dry Ice

Storage Condition: Store vial at -20° C prior to opening. Aliquot contents and freeze at -20° C or below for extended storage. Avoid cycles of freezing and thawing. Centrifuge product if not completely clear after standing at room temperature. This product is stable for several weeks at 4° C as an undiluted liquid. Dilute only prior to immediate use.

Expiration: Expiration date is one (1) year from date of receipt.

Images



Immunofluorescence Microscopy

Immunofluorescence of SYNPO2.

Tissue: mouse skeletal muscle tissue.

Primary Antibody: Anti-SYNPO2 antibody at 20 $\mu\text{g/mL}$.

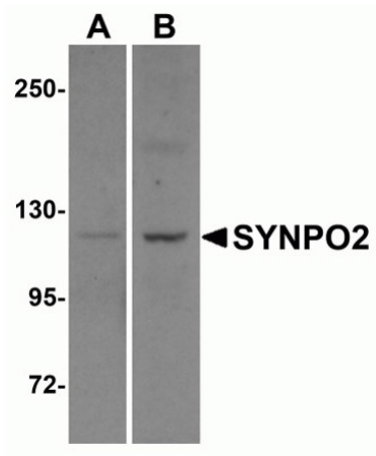


Immunohistochemistry

Immunohistochemistry of SYNPO2.

Tissue: mouse skeletal muscle tissue.

Primary Antibody: anti-SYNPO2 antibody at 5 $\mu\text{g/mL}$.

**Western Blot**

Western blot analysis of SYNPO2.

Tissue: human skeletal muscle tissue lysate.

Primary Antibody: Anti-SYNPO2 antibody at 1 μ g/mL in (A) the absence and (B) the presence of blocking peptide.

Disclaimer

This product is for research use only and is not intended for therapeutic or diagnostic applications. Please contact a technical service representative for more information. All products of animal origin manufactured by Rockland Immunochemicals are derived from starting materials of North American origin. Collection was performed in United States Department of Agriculture (USDA) inspected facilities and all materials have been inspected and certified to be free of disease and suitable for exportation. All properties listed are typical characteristics and are not specifications. All suggestions and data are offered in good faith but without guarantee as conditions and methods of use of our products are beyond our control. All claims must be made within 30 days following the date of delivery. The prospective user must determine the suitability of our materials before adopting them on a commercial scale. Suggested uses of our products are not recommendations to use our products in violation of any patent or as a license under any patent of Rockland Immunochemicals, Inc. If you require a commercial license to use this material and do not have one, then return this material, unopened to: Rockland Inc., P.O. BOX 5199, Limerick, Pennsylvania, USA.