

Datasheet for 600-401-EY2

SYNGR4 Antibody

Overview

Description:	Anti-SYNGR4 (RABBIT) Antibody - 600-401-EY2
Item No.:	600-401-EY2
Size:	100 µg
Applications:	ELISA, IF, IHC, WB
Reactivity:	Human, Mouse, Rat
Host Species:	Rabbit

Product Details

Background:	Synaptogyrins comprise a family of tyrosine-phosphorylated membrane proteins with two neuronal (SYNGR1 and SYNGR3) and one ubiquitous (SYNGR2) members. SYNGR1 and -3 are synaptic vesicle proteins, residing in some cases on the same synaptic vesicle, and are thought to be involved in the regulation of neurotransmitter release. SYNGR2, by contrast, is absent from synaptic vesicles. SYNGR3 is predominantly expressed in brain and placenta. The role and localization of a fourth synaptogyrin, SYNGR4, is unclear.
Synonyms:	SYNGR4 Antibody, Synaptogyrin-4
Host Species:	Rabbit
Clonality:	Polyclonal
Format:	IgG

Target Details

Gene Name:	SYNGR4
Reactivity:	Human, Mouse, Rat
Immunogen Type:	Conjugated Peptide
Immunogen:	Anti-SYNGR4 antibody was prepared from whole rabbit serum produced by repeated immunizations with a 14 amino acid synthetic peptide from near the N-terminus of human SYNGR4.

Purity/Specificity:	Anti-SYNGR4 Antibody was affinity purified from monospecific antiserum by immunoaffinity chromatography. Cross reactivity with SYNGR4 from other sources has not been determined.
Relevant Links:	<ul style="list-style-type: none">• UniProtKB - O95473• GeneID - 23546• NCBI - NP_036583.2

Application Details

Tested Applications:	ELISA, IF, IHC, WB
Application Note:	Anti-SYNGR4 Antibody has been tested for use in ELISA, Western Blotting, Immunohistochemistry and Immunofluorescence. Specific conditions for reactivity should be optimized by the end user. Expect a band at approximately 26 kDa in Western Blots of specific cell lysates and tissues.
Assay Dilutions:	All assays should be optimized by the user. Recommended dilutions (if any) may be listed below.
ELISA:	1:10,000 - 1:20,000
IF:	20 µg/mL
IHC:	5 µg/mL
WB:	1-2 µg/mL

Formulation

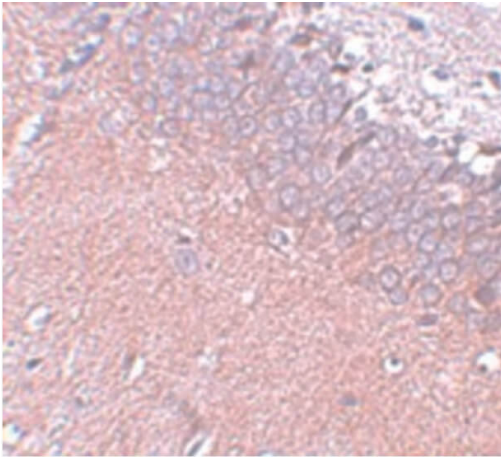
Physical State:	Liquid (sterile filtered)
Concentration:	1 mg/mL by UV absorbance at 280 nm
Buffer:	0.01 M Sodium Phosphate, 0.25 M Sodium Chloride, pH 7.2
Preservative:	0.02% (w/v) Sodium Azide
Stabilizer:	None

Shipping & Handling

Shipping Condition:	Dry Ice
Storage Condition:	Store vial at -20° C prior to opening. Aliquot contents and freeze at -20° C or below for extended storage. Avoid cycles of freezing and thawing. Centrifuge product if not completely clear after standing at room temperature. This product is stable for several weeks at 4° C as an undiluted liquid. Dilute only prior to immediate use.

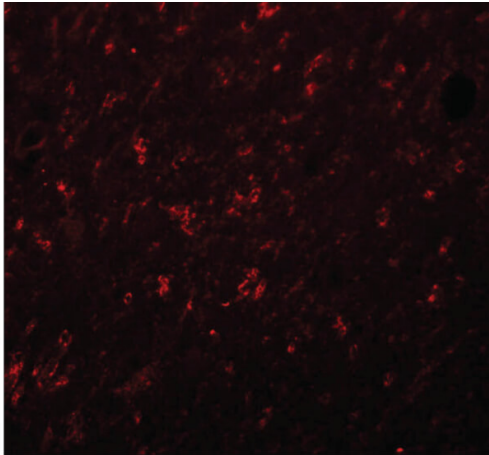
Expiration: Expiration date is one (1) year from date of receipt.

Images



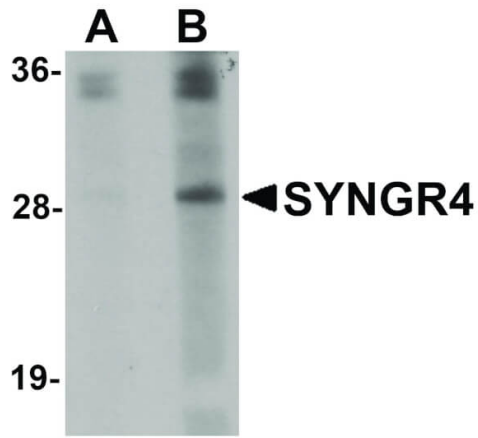
Immunohistochemistry

Immunohistochemistry of SYNGR4 antibody. Tissue: Rat brain tissue. Fixation: formalin fixed paraffin embedded. Antigen retrieval: not required. Primary antibody: SYNGR4 antibody at 5 $\mu\text{g}/\text{mL}$ for 1 h at RT. Secondary antibody: Peroxidase rabbit secondary antibody at 1:10,000 for 45 min at RT. Localization: SYNGR4 is localized in the host cell nucleus and cytoplasm. Staining: SYNGR4 as precipitated pink signal with purple nuclear counterstain.



Immunofluorescence Microscopy

Immunofluorescence Microscopy of SYNGR4 antibody. Tissue: Rat brain tissue. Fixation: 0.5% PFA. Antigen retrieval: not required. Primary antibody: SYNGR4 antibody at 20 $\mu\text{g}/\text{mL}$ for 1 h at RT. Secondary antibody: Fluorescein rabbit secondary antibody at 1:10,000 for 45 min at RT. Localization: SYNGR4 is localized in the host cell nucleus and cytoplasm. Staining: SYNGR4 as red fluorescent signal.

**Western Blot**

Western Blot of SYNGR4 antibody. Lane 1: K562 cell lysate with SYNGR4 antibody at 1 µg/mL. Lane 2: K562 cell lysate with SYNGR4 antibody at 2 µg/mL. Secondary antibody: Peroxidase rabbit secondary antibody at 1:10,000 for 45 min at RT. Block: 5% BLOTTO overnight at 4°C. Predicted/Observed size: 26 kDa, 29 kDa for SYNGR4. Other band(s): SYNGR4 splice variants and isoforms.

Disclaimer

This product is for research use only and is not intended for therapeutic or diagnostic applications. Please contact a technical service representative for more information. All products of animal origin manufactured by Rockland Immunochemicals are derived from starting materials of North American origin. Collection was performed in United States Department of Agriculture (USDA) inspected facilities and all materials have been inspected and certified to be free of disease and suitable for exportation. All properties listed are typical characteristics and are not specifications. All suggestions and data are offered in good faith but without guarantee as conditions and methods of use of our products are beyond our control. All claims must be made within 30 days following the date of delivery. The prospective user must determine the suitability of our materials before adopting them on a commercial scale. Suggested uses of our products are not recommendations to use our products in violation of any patent or as a license under any patent of Rockland Immunochemicals, Inc. If you require a commercial license to use this material and do not have one, then return this material, unopened to: Rockland Inc., P.O. BOX 5199, Limerick, Pennsylvania, USA.